

ARG52667 anti-CD10 antibody [SP179]

Package: 100 µl, 50 µl
Store at: -20°C

Summary

| | |
|---------------------|--|
| Product Description | Rabbit Monoclonal antibody [SP179] recognizes CD10 |
| Tested Reactivity | Hu, Ms, Rat |
| Tested Application | FACS, IHC-P, WB |
| Host | Rabbit |
| Clonality | Monoclonal |
| Clone | SP179 |
| Isotype | IgG |
| Target Name | CD10 |
| Species | Human |
| Immunogen | Synthetic peptide derived from the N-terminus of human CD10 protein. |
| Conjugation | Un-conjugated |
| Alternate Names | Enkephalinase; Neutral endopeptidase; Neutral endopeptidase 24.11; Common acute lymphocytic leukemia antigen; Nephilysin; CD antigen CD10; CALLA; EC 3.4.24.11; CD10; Skin fibroblast elastase; SFE; Atriopeptidase; NEP |

Application Instructions

| | | |
|-------------------|--|-----------------|
| Application table | Application | Dilution |
| | FACS | Assay-Dependent |
| | IHC-P | 1:100 |
| | WB | 1:400 |
| Application Note | * The dilutions indicate recommended starting dilutions and the optimal dilutions or concentrations should be determined by the scientist. | |
| Positive Control | Kidney, Tonsil, LNCaP Cell Lysate | |

Properties

| | |
|---------------------|--|
| Form | Liquid |
| Purification | Purified by protein A/G |
| Buffer | PBS (pH 7.6), 1% BSA and < 0.1% Sodium azide |
| Preservative | < 0.1% Sodium azide |
| Stabilizer | 1% BSA |
| Storage instruction | For continuous use, store undiluted antibody at 2-8°C for up to a week. For long-term storage, aliquot and store at -20°C or below. Storage in frost free freezers is not recommended. Avoid repeated freeze/thaw cycles. Suggest spin the vial prior to opening. The antibody solution should be gently mixed |

before use.

Note

For laboratory research only, not for drug, diagnostic or other use.

Bioinformation

Background

CD10 is a type II transmembrane glycoprotein and a common acute lymphocytic leukemia antigen that is an important cell surface marker in the diagnosis of human acute lymphocytic leukemia (ALL). The encoded protein is present on leukemic cells of pre-B phenotype, which represent 85% of cases of ALL. This protein is not restricted to leukemic cells, however, and is found on a variety of normal tissues. The protein is a neutral endopeptidase that cleaves peptides at the amino side of hydrophobic residues and inactivates several peptide hormones including glucagon, enkephalins, substance P, neurotensin, oxytocin, and bradykinin. [provided by RefSeq, Aug 2017]

Function

CD10: Thermolysin-like specificity, but is almost confined on acting on polypeptides of up to 30 amino acids (PubMed:15283675, PubMed:8168535). Biologically important in the destruction of opioid peptides such as Met- and Leu-enkephalins by cleavage of a Gly-Phe bond (PubMed:17101991). Able to cleave angiotensin-1, angiotensin-2 and angiotensin 1-9 (PubMed:15283675). Involved in the degradation of atrial natriuretic factor (ANF) (PubMed:2531377, PubMed:2972276). Displays UV-inducible elastase activity toward skin preelastic and elastic fibers (PubMed:20876573). [UniProt]

Highlight

Related products:

[CD10 antibodies](#); [CD10 ELISA Kits](#); [CD10 Duos / Panels](#); [Anti-Rabbit IgG secondary antibodies](#);

Related news:

[Lymphoma](#)

Research Area

Cancer antibody; Developmental Biology antibody; Immune System antibody

Calculated Mw

86 kDa

PTM

Myristoylation is a determinant of membrane targeting.

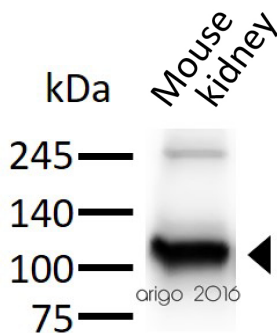
Glycosylation at Asn-628 is necessary both for surface expression and neutral endopeptidase activity.

Cellular Localization

Membrane

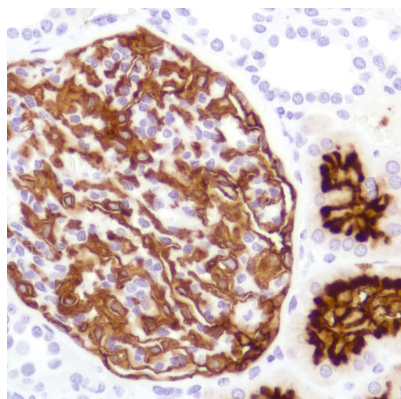
Images

ARG52667 anti-CD10 antibody [SP179] WB image

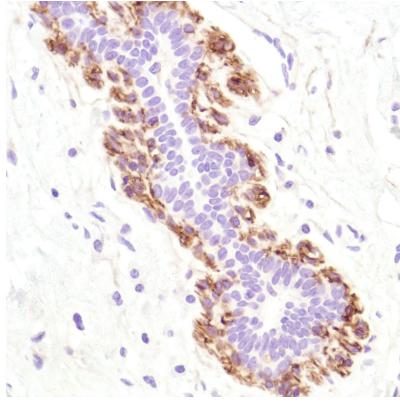


Western blot: 30 µg of Mouse kidney lysate stained with ARG52667 anti-CD10 antibody [SP179] at 1:400 dilution.

ARG52667 anti-CD10 antibody [SP179] IHC-P image

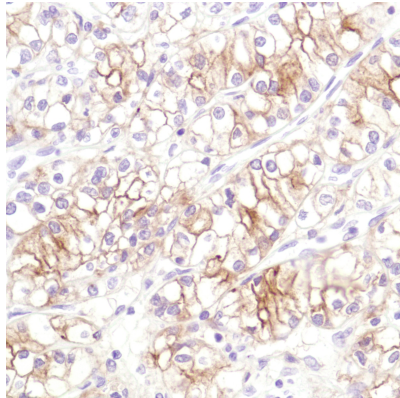


Immunohistochemistry: Human Kidney stained with CD10 antibody [SP179] (ARG52667)



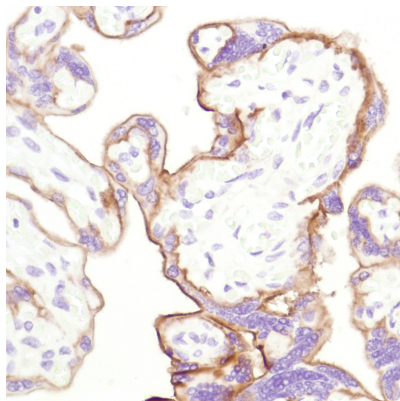
ARG52667 anti-CD10 antibody [SP179] IHC-P image

Immunohistochemistry: Human Breast stained with CD10 antibody [SP179] (ARG52667)



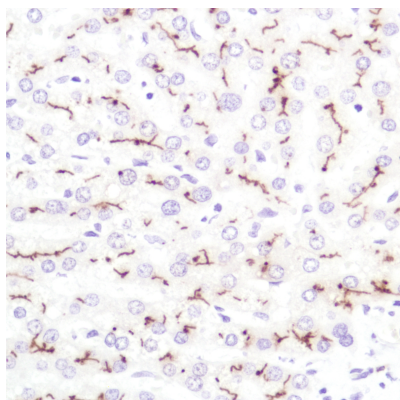
ARG52667 anti-CD10 antibody [SP179] IHC-P image

Immunohistochemistry: Human Renal Cell Carcinoma stained with CD10 antibody [SP179] (ARG52667)



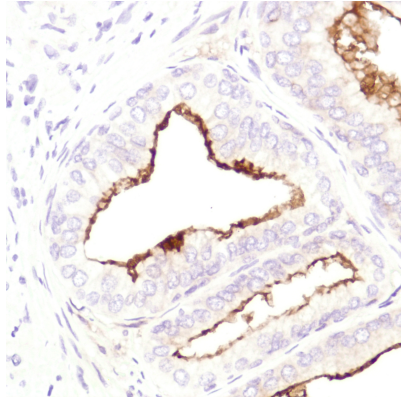
ARG52667 anti-CD10 antibody [SP179] IHC-P image

Immunohistochemistry: Human Placenta stained with CD10 antibody [SP179] (ARG52667)



ARG52667 anti-CD10 antibody [SP179] IHC-P image

Immunohistochemistry: Human Liver stained with CD10 antibody [SP179] (ARG52667)



ARG52667 anti-CD10 antibody [SP179] IHC-P image

Immunohistochemistry: Human Prostate stained with CD10 antibody [SP179] (ARG52667)