

**ARG52673**  
**anti-CD117 / c-Kit antibody**Package: 500 µl  
Store at: -20°C

### Summary

Product Description	Rabbit Polyclonal antibody recognizes CD117 / c-Kit
Tested Reactivity	Hu
Tested Application	ICC/IF, IHC-P
Host	Rabbit
Clonality	Polyclonal
Isotype	IgG
Target Name	CD117 / c-Kit
Species	Human
Immunogen	Synthetic peptide from the cytoplasmic domain of human CD117/c-kit protein.
Conjugation	Un-conjugated
Alternate Names	PBT; C-Kit; Tyrosine-protein kinase Kit; CD antigen CD117; Mast/stem cell growth factor receptor Kit; CD117; Proto-oncogene c-Kit; SCFR; Piebald trait protein; v-kit Hardy-Zuckerman 4 feline sarcoma viral oncogene homolog; p145 c-kit; EC 2.7.10.1

### Application Instructions

Application table	Application	Dilution
	ICC/IF	1:50
	IHC-P	1:100
Application Note	IHC-P: Antigen Retrieval: Boil tissue section in 10mM citrate buffer, pH 6.0 for 10 min followed by cooling at RT for 20 min. Incubation Time: 10 min at RT. * The dilutions indicate recommended starting dilutions and the optimal dilutions or concentrations should be determined by the scientist.	
Positive Control	Gastrointestinal Stromal Tumor	

### Properties

Form	Liquid
Purification	Immunogen affinity purified
Buffer	PBS (pH 7.6), 1% BSA and < 0.1% Sodium azide
Preservative	< 0.1% Sodium azide
Stabilizer	1% BSA
Storage instruction	For continuous use, store undiluted antibody at 2-8°C for up to a week. For long-term storage, aliquot and store at -20°C or below. Storage in frost free freezers is not recommended. Avoid repeated freeze/thaw cycles. Suggest spin the vial prior to opening. The antibody solution should be gently mixed

before use.

Note

For laboratory research only, not for drug, diagnostic or other use.

## Bioinformation

---

Database links

[GeneID: 3815 Human](#)

[Swiss-port # P10721 Human](#)

Background

Recognizes a protein of 145kDa, which is identified as CD117/p145kit. This rabbit polyclonal antibody does not interfere with the binding of SCF to c-kit. It precipitates both the unoccupied as well as the occupied form of c-kit. The binding of the stem cell factor (SCF) to the c-kit-encoded receptor tyrosine kinase (Type III) stimulates a variety of biochemical responses that culminate in cellular proliferation, migration, or survival. C-kit plays an important role in hematopoiesis, melanogenesis, and gametogenesis.

Research Area

Cancer antibody; Controls and Markers antibody; Developmental Biology antibody; Immune System antibody; Neuroscience antibody; Signaling Transduction antibody

Calculated Mw

110 kDa

PTM

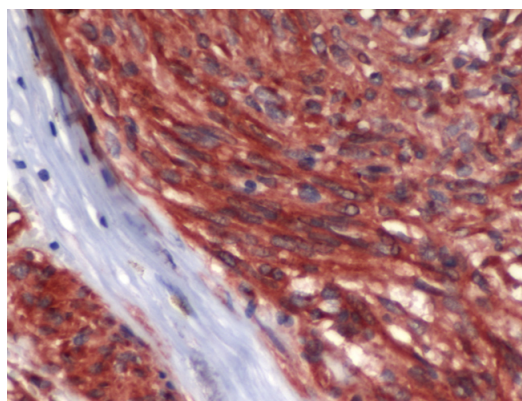
Ubiquitinated by SOCS6. KIT is rapidly ubiquitinated after autophosphorylation induced by KITLG/SCF binding, leading to internalization and degradation. Autophosphorylated on tyrosine residues. KITLG/SCF binding enhances autophosphorylation. Isoform 1 shows low levels of tyrosine phosphorylation in the absence of added KITLG/SCF (in vitro). Kinase activity is down-regulated by phosphorylation on serine residues by protein kinase C family members. Phosphorylation at Tyr-568 is required for interaction with PTPN11/SHP-2, CRK (isoform Crk-II) and members of the SRC tyrosine-protein kinase family. Phosphorylation at Tyr-570 is required for interaction with PTPN6/SHP-1. Phosphorylation at Tyr-703, Tyr-823 and Tyr-936 is important for interaction with GRB2. Phosphorylation at Tyr-721 is important for interaction with PIK3R1. Phosphorylation at Tyr-823 and Tyr-936 is important for interaction with GRB7.

Cellular Localization

Cytoplasm

## Images

---



ARG52673 anti-CD117 / c-Kit antibody IHC-P image

Immunohistochemistry: Human GI Stromal Tumor stained with ARG52673 anti-CD117 / c-Kit antibody.