

ARG52704 anti-CD16a antibody [SP189]

Package: 100 µl
Store at: -20°C

Summary

Product Description	Rabbit Monoclonal antibody [SP189] recognizes CD16a
Tested Reactivity	Hu
Tested Application	FACS, IHC-P, WB
Host	Rabbit
Clonality	Monoclonal
Clone	SP189
Isotype	IgG
Target Name	CD16a
Species	Human
Immunogen	Synthetic peptide derived from the C-terminus of human CD16a protein.
Conjugation	Un-conjugated
Alternate Names	FCRIIIA; FcRIIIa; CD antigen CD16a; Fc-gamma RIII-alpha; FcR-10; FcR-10; FCRIII; FCG3; Low affinity immunoglobulin gamma Fc region receptor III-A; FCGRIII; CD16; Fc-gamma RIIIa; IgG Fc receptor III-2; IMD20; CD16A; IGFR3; CD16a antigen; FCGR3; FcRIII; Fc-gamma RIII

Application Instructions

Application table	Application	Dilution
	FACS	Assay-Dependent
	IHC-P	1:100
	WB	1:100
Application Note	* The dilutions indicate recommended starting dilutions and the optimal dilutions or concentrations should be determined by the scientist.	
Positive Control	Lung, Tonsil, K562 Cell Lysate	

Properties

Form	Liquid
Purification	Purified by protein A/G
Buffer	PBS (pH 7.6), 1% BSA and < 0.1% Sodium azide
Preservative	< 0.1% Sodium azide
Stabilizer	1% BSA
Storage instruction	For continuous use, store undiluted antibody at 2-8°C for up to a week. For long-term storage, aliquot and store at -20°C or below. Storage in frost free freezers is not recommended. Avoid repeated freeze/thaw cycles. Suggest spin the vial prior to opening. The antibody solution should be gently mixed

before use.

Note

For laboratory research only, not for drug, diagnostic or other use.

Bioinformation

Database links

[GeneID: 2214 Human](#)

[Swiss-port # P08637 Human](#)

Background

CD16 is a cluster of differentiation found on the surface of natural killer or polymorphonuclear leukocytes (PMN) cells, neutrophils, monocytes and macrophages. There are two CD16 isoform CD16a and CD16b. CD16a is expressed in monocytes, macrophages and NK cells and CD16b is expressed in neutrophils.

Highlight

Related products:

[CD16 antibodies](#); [CD16 ELISA Kits](#); [CD16 Duos / Panels](#); [Anti-Rabbit IgG secondary antibodies](#);

Related news:

[Tumor-Infiltrating Lymphocytes \(TILs\)](#)

Research Area

Developmental Biology antibody; Immune System antibody; General Lymphocyte Marker Study antibody; Natural killer cells antibody

Calculated Mw

29 kDa

PTM

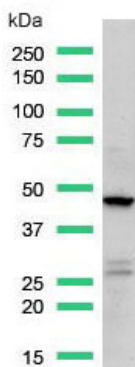
Glycosylated. Contains high mannose- and complex-type oligosaccharides. Glycosylation at Asn-180 is mandatory for high affinity binding to the Fc and for discrimination between fucosylated and afucosylated IgG glycoforms.

The soluble form is produced by a proteolytic cleavage.

Cellular Localization

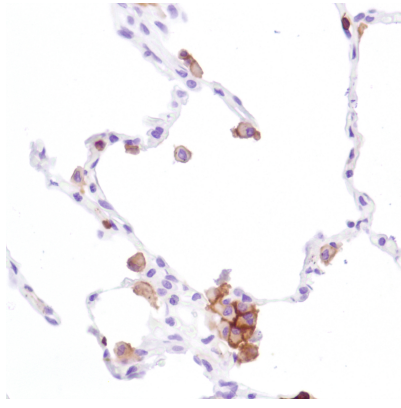
Membrane

Images



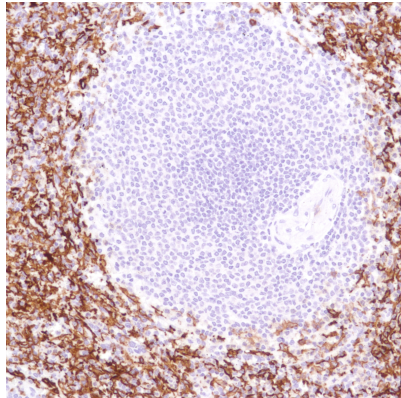
ARG52704 anti-CD16a antibody [SP189] WB image

Western Blot: K562 Cell Lysate stained with CD16a antibody [SP189] (ARG52704)



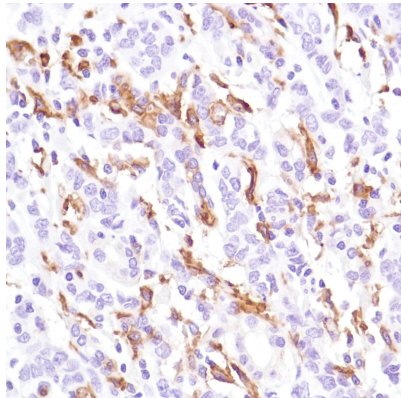
ARG52704 anti-CD16a antibody [SP189] IHC-P image

Immunohistochemistry: Human Lung stained with CD16a antibody [SP189] (ARG52704)



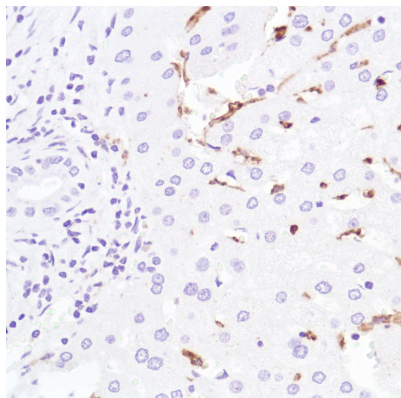
ARG52704 anti-CD16a antibody [SP189] IHC-P image

Immunohistochemistry: Human Spleen stained with CD16a antibody [SP189] (ARG52704)



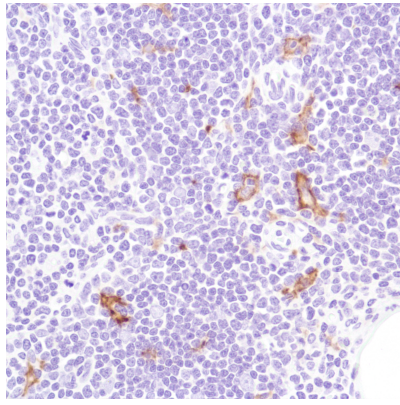
ARG52704 anti-CD16a antibody [SP189] IHC-P image

Immunohistochemistry: Human Stomach Adenocarcinoma stained with CD16a antibody [SP189] (ARG52704)



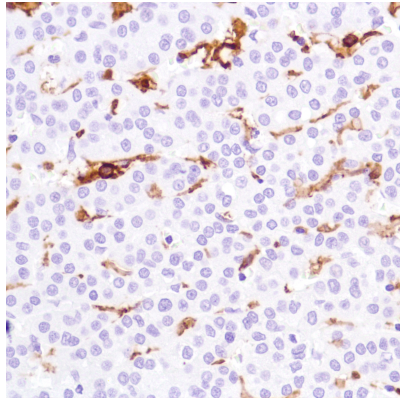
ARG52704 anti-CD16a antibody [SP189] IHC-P image

Immunohistochemistry: Human Liver stained with CD16a antibody [SP189] (ARG52704)



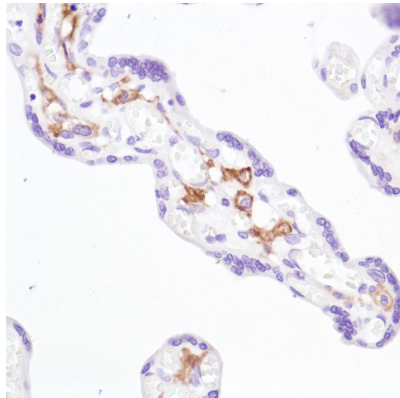
ARG52704 anti-CD16a antibody [SP189] IHC-P image

Immunohistochemistry: Human Thymus stained with CD16a antibody [SP189] (ARG52704)



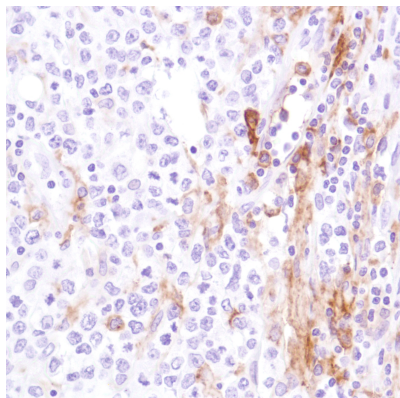
ARG52704 anti-CD16a antibody [SP189] IHC-P image

Immunohistochemistry: Human Liver Hepatocellular Carcinoma stained with CD16a antibody [SP189] (ARG52704)



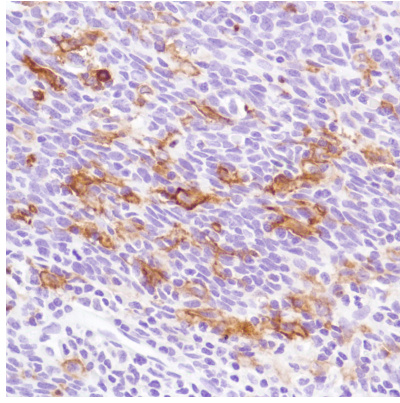
ARG52704 anti-CD16a antibody [SP189] IHC-P image

Immunohistochemistry: Human Placenta stained with CD16a antibody [SP189] (ARG52704)



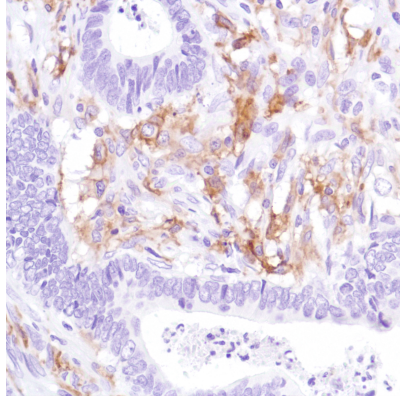
ARG52704 anti-CD16a antibody [SP189] IHC-P image

Immunohistochemistry: Human B Cell Lymphoma stained with CD16a antibody [SP189] (ARG52704)



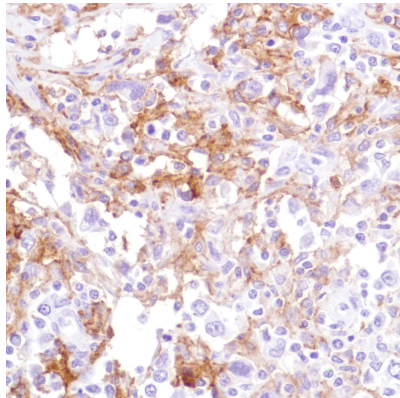
ARG52704 anti-CD16a antibody [SP189] IHC-P image

Immunohistochemistry: Human Cervical Squamous Cell Carcinoma stained with CD16a antibody [SP189] (ARG52704)



ARG52704 anti-CD16a antibody [SP189] IHC-P image

Immunohistochemistry: Human Colon Adenocarcinoma stained with CD16a antibody [SP189] (ARG52704)



ARG52704 anti-CD16a antibody [SP189] IHC-P image

Immunohistochemistry: Human HK Lymphoma stained with CD16a antibody [SP189] (ARG52704)
