

ARG52716 anti-CD20 antibody

Package: 500 µl
Store at: -20°C

Summary

Product Description	Rabbit Polyclonal antibody recognizes CD20
Tested Reactivity	Hu
Predict Reactivity	Dog
Tested Application	ICC/IF, IHC-P, WB
Host	Rabbit
Clonality	Polyclonal
Isotype	IgG
Target Name	CD20
Species	Human
Immunogen	Synthetic peptide from C-terminus of human CD20 protein.
Conjugation	Un-conjugated
Alternate Names	Bp35; LEU-16; B-lymphocyte surface antigen B1; B-lymphocyte antigen CD20; CD20; S7; CD antigen CD20; Leukocyte surface antigen Leu-16; B1; CVID5; Membrane-spanning 4-domains subfamily A member 1; MS4A2

Application Instructions

Application table	Application	Dilution
	ICC/IF	1:100
	IHC-P	1:300
	WB	1:25
Application Note	IHC-P: Incubation Time: 10 min at RT. * The dilutions indicate recommended starting dilutions and the optimal dilutions or concentrations should be determined by the scientist.	
Positive Control	B Cell Lymphoma, Tonsil, Raji	

Properties

Form	Liquid
Purification	Immunogen affinity purified
Buffer	PBS (pH 7.6), 1% BSA and < 0.1% Sodium azide
Preservative	< 0.1% Sodium azide
Stabilizer	1% BSA

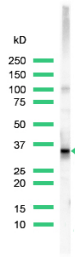
Storage instruction	For continuous use, store undiluted antibody at 2-8°C for up to a week. For long-term storage, aliquot and store at -20°C or below. Storage in frost free freezers is not recommended. Avoid repeated freeze/thaw cycles. Suggest spin the vial prior to opening. The antibody solution should be gently mixed before use.
Note	For laboratory research only, not for drug, diagnostic or other use.

Bioinformation

Database links	GeneID: 931 Human Swiss-port # P11836 Human
Background	CD20 is a member of the membrane-spanning 4A gene family. Members of this nascent protein family are characterized by common structural features and similar intron/exon splice boundaries and display unique expression patterns among hematopoietic cells and nonlymphoid tissues. This gene encodes a B-lymphocyte surface molecule which plays a role in the development and differentiation of B-cells into plasma cells. This family member is localized to 11q12, among a cluster of family members. Alternative splicing of this gene results in two transcript variants which encode the same protein. [provided by RefSeq, Jul 2008]
Function	CD20 is a B-lymphocyte-specific membrane protein. It plays a role in the regulation of cellular calcium influx necessary for the development, differentiation, and activation of B-lymphocytes (PubMed:3925015, PubMed:7684739, PubMed:12920111). Functions as a store-operated calcium (SOC) channel component promoting calcium influx after activation by the B-cell receptor/BCR (PubMed:7684739, PubMed:12920111, PubMed:18474602). [UniProt]
Highlight	<p>Related products: CD20 antibodies; CD20 ELISA Kits; CD20 Duos / Panels; Anti-Rabbit IgG secondary antibodies;</p> <p>Related news: Lymphoma New antibody panels and duos for Tumor immune microenvironment Tumor-Infiltrating Lymphocytes (TILs) Exploring Antiviral Immune Response</p>
Research Area	Cancer antibody; Developmental Biology antibody; Immune System antibody; B cell Marker antibody; Immature B Cell Marker antibody; Inflammatory Cell Marker antibody; Tumor-infiltrating Lymphocyte Study antibody
Calculated Mw	33 kDa
PTM	Phosphorylated. Might be functionally regulated by protein kinase(s).
Cellular Localization	Cytoplasm, Membrane

ARG52716 anti-CD20 antibody WB image

Western Blot: Raji stained with CD20 antibody (ARG52716)



ARG52716 anti-CD20 antibody IHC-P image

Immunohistochemistry: Human Tonsil stained with CD20 antibody (ARG52716)

