

ARG52756
anti-CD34 antibody [QBEND/10]Package: 100 µl, 50 µl
Store at: -20°C

Summary

Product Description	Mouse Monoclonal antibody [QBEND/10] recognizes CD34 (Endothelial Cell Marker)
Tested Reactivity	Hu, Ms, NHuPrm, Rb
Species Does Not React With	Rat, Bov, Dog, Sheep
Tested Application	FACS, ICC/IF, IHC-Fr, IHC-P, IP, WB
Specificity	The antibody recognizes the CD34 antigen, some cross reactions with vascular associated adventitia and some basement membranes. Clone QBEND/10 immunoprecipitates a glycoprotein with a relative MW 110kD expressed on haematopoietic cells and on the established myeloid leukaemic cell line KG1A. The clone QBEND/10 recognises the Class II epitope on CD34.
Host	Mouse
Clonality	Monoclonal
Clone	QBEND/10
Isotype	IgG1, kappa
Target Name	CD34
Species	Human
Immunogen	Detergent solubilized vesicular suspension prepared from a perfusate of human term placenta.
Conjugation	Un-conjugated
Alternate Names	Hematopoietic progenitor cell antigen CD34; CD antigen CD34

Application Instructions

Application table	Application	Dilution
	FACS	Assay-Dependent
	ICC/IF	Assay-Dependent
	IHC-Fr	Assay-Dependent
	IHC-P	1:200
	IP	Assay-Dependent
	WB	Assay-dependent
Application Note	IHC-P: Incubation Time: 10 min at RT. * The dilutions indicate recommended starting dilutions and the optimal dilutions or concentrations should be determined by the scientist.	
Positive Control	Lung, Tonsil	
Observed Size	105-120 kDa	

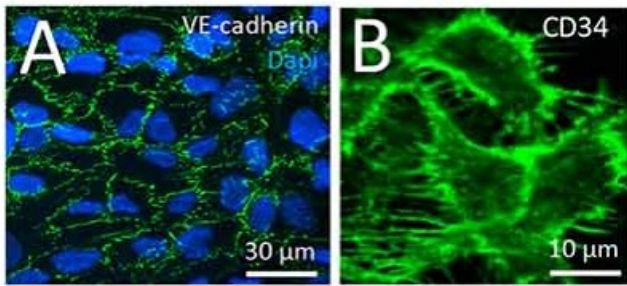
Properties

Form	Liquid
Buffer	Tissue culture supernatant in TBS (pH 7.5), 1% BSA and < 0.1% Sodium azide
Preservative	< 0.1% Sodium azide
Stabilizer	1% BSA
Storage instruction	For continuous use, store undiluted antibody at 2-8°C for up to a week. For long-term storage, aliquot and store at -20°C or below. Storage in frost free freezers is not recommended. Avoid repeated freeze/thaw cycles. Suggest spin the vial prior to opening. The antibody solution should be gently mixed before use.
Note	For laboratory research only, not for drug, diagnostic or other use.

Bioinformation

Database links	GeneID: 12490 Mouse GeneID: 947 Human Swiss-port # P28906 Human Swiss-port # Q64314 Mouse
Gene Symbol	CD34
Gene Full Name	CD34 molecule
Background	CD34 protein may play a role in the attachment of stem cells to the bone marrow extracellular matrix or to stromal cells. This single-pass membrane protein is highly glycosylated and phosphorylated by protein kinase C. Two transcript variants encoding different isoforms have been found for this gene. [provided by RefSeq, Aug 2011]
Function	CD34 is a possible adhesion molecule with a role in early hematopoiesis by mediating the attachment of stem cells to the bone marrow extracellular matrix or directly to stromal cells. Could act as a scaffold for the attachment of lineage specific glycans, allowing stem cells to bind to lectins expressed by stromal cells or other marrow components. Presents carbohydrate ligands to selectins. [UniProt]
Highlight	Related Antibody Duos and Panels: ARG30300 Endothelial Cell Marker Antibody Duo (CD31, CD34) ARG30328 Angiogenesis Antibody Panel Related products: CD34 antibodies ; CD34 ELISA Kits ; CD34 Duos / Panels ; Anti-Mouse IgG secondary antibodies ; Related news: Vascular development is regulated by FGF-dependent metabolic control
Research Area	Cancer antibody; Cell Biology and Cellular Response antibody; Controls and Markers antibody; Developmental Biology antibody; Immune System antibody; Neuroscience antibody; Pro-B Cell Marker antibody; Endothelial Cell Marker antibody; Angiogenesis Study antibody
Calculated Mw	41 kDa
PTM	Highly glycosylated. Phosphorylated on serine residues by PKC.
Cellular Localization	Cytoplasm, Membrane

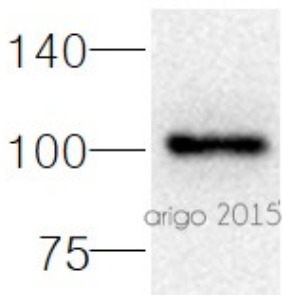
hCMEC/D3 cells



ARG52756 anti-CD34 antibody [QBEND/10] ICC/IF image

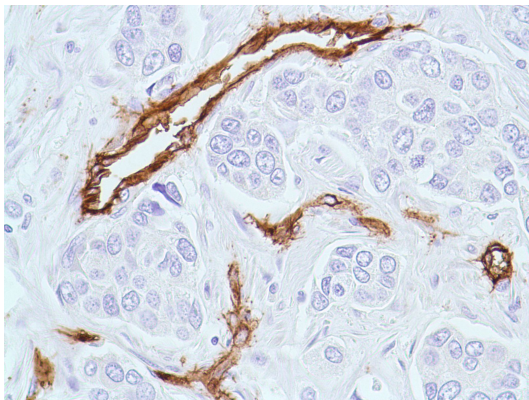
Immunofluorescence: hCMEC/D3 cells stained with ARG52756 anti-CD34 antibody [QBEND/10].

From Lucie Y Li et al. *Front Cell Neurosci.* (2023), [doi: 10.3389/fncel.2023.1077204](https://doi.org/10.3389/fncel.2023.1077204), Fig. 3A & B.



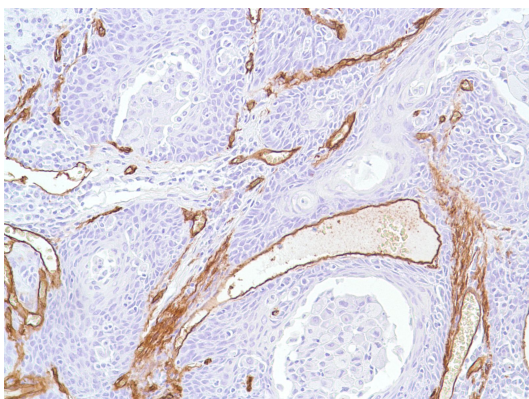
ARG52756 anti-CD34 antibody [QBEND/10] WB image

Western blot: 30 μg of mouse lung lysate stained with ARG52756 anti-CD34 antibody [QBEND/10] at 1:500 dilution.



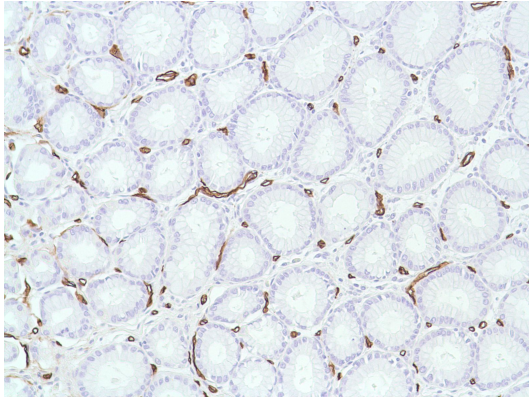
ARG52756 anti-CD34 antibody [QBEND/10] IHC-P image

Immunohistochemistry: Human Breast Ductal Carcinoma stained with CD34 (Endothelial Cell Marker) antibody [QBEnd/10] (ARG52756)



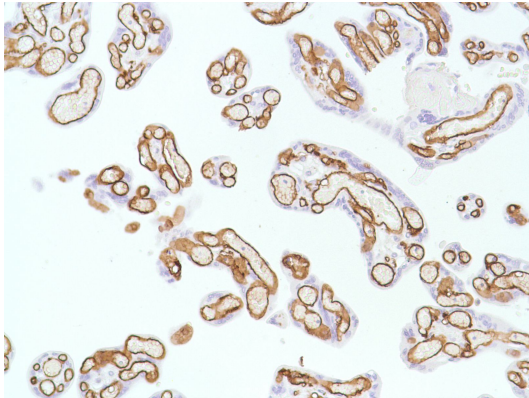
ARG52756 anti-CD34 antibody [QBEND/10] IHC-P image

Immunohistochemistry: Human Cervical Squamous Cell carcinoma stained with CD34 (Endothelial Cell Marker) antibody [QBEnd/10] (ARG52756)



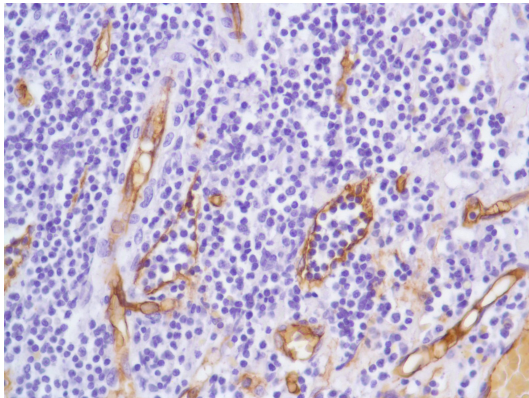
ARG52756 anti-CD34 antibody [QBEND/10] IHC-P image

Immunohistochemistry: Human Colon stained with CD34 (Endothelial Cell Marker) antibody [QBEnd/10] (ARG52756)



ARG52756 anti-CD34 antibody [QBEND/10] IHC-P image

Immunohistochemistry: Human Placenta stained with CD34 (Endothelial Cell Marker) antibody [QBEnd/10] (ARG52756)



ARG52756 anti-CD34 antibody [QBEND/10] IHC-P image

Immunohistochemistry: Human Tonsil stained with CD34 (Endothelial Cell Marker) antibody [QBEnd/10] (ARG52756)
