

ARG52764
anti-CD38 antibody [SP149]Package: 100 µl, 50 µl
Store at: -20°C

Summary

Product Description	Rabbit Monoclonal antibody [SP149] recognizes CD38
Tested Reactivity	Hu
Tested Application	FACS, IHC-P
Host	Rabbit
Clonality	Monoclonal
Clone	SP149
Isotype	IgG
Target Name	CD38
Antigen Species	Human
Immunogen	Synthetic peptide derived from the C-terminus of human CD38 protein.
Conjugation	Un-conjugated
Alternate Names	cADPr hydrolase 1; ADPRC 1; EC 3.2.2.6; 2'-phospho-ADP-ribosyl cyclase/2'-phospho-cyclic-ADP-ribose transferase; Cyclic ADP-ribose hydrolase 1; ADPRC1; EC 2.4.99.20; ADP-ribosyl cyclase 1; 2'-phospho-cyclic-ADP-ribose transferase; CD antigen CD38; T10; 2'-phospho-ADP-ribosyl cyclase; ADP-ribosyl cyclase/cyclic ADP-ribose hydrolase 1

Application Instructions

Application table	Application	Dilution
	FACS	1:100
	IHC-P	1:100
Application Note	IHC-P: Antigen Retrieval: Boil tissue section in 10mM citrate buffer, pH 6.0 for 10 min followed by cooling at RT for 20 min. Incubation Time: 10 min at RT. * The dilutions indicate recommended starting dilutions and the optimal dilutions or concentrations should be determined by the scientist.	
Positive Control	Tonsil	
Calculated Mw	34 kDa	

Properties

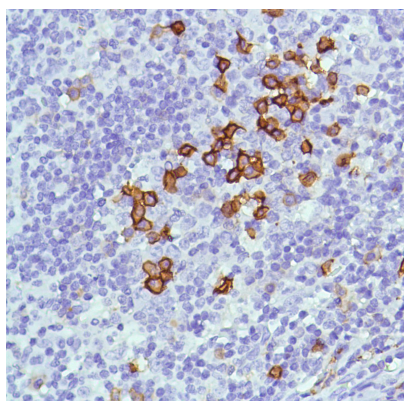
Form	Liquid
Buffer	Tissue culture supernatant in TBS (pH 7.5), 1% BSA and < 0.1% Sodium azide
Preservative	< 0.1% Sodium azide
Stabilizer	1% BSA

Storage instruction	For continuous use, store undiluted antibody at 2-8°C for up to a week. For long-term storage, aliquot and store at -20°C or below. Storage in frost free freezers is not recommended. Avoid repeated freeze/thaw cycles. Suggest spin the vial prior to opening. The antibody solution should be gently mixed before use.
Note	For laboratory research only, not for drug, diagnostic or other use.

Bioinformation

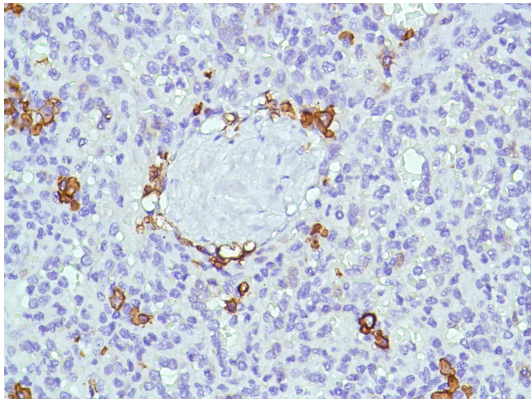
Database links	GeneID: 952 Human Swiss-port # P28907 Human
Background	CD38 (cluster of differentiation 38), also known as cyclic ADP ribose hydrolase, is a transmembrane glycoprotein found on the surface of some immune cells including plasma cells, activated or immature T and B cells, monocytes, and natural killer cells. CD38 participates in cell adhesion, signal transduction and calcium signaling. It is expressed at high levels in the plasma cell tumor, prostate cancer, stomach cancer, and neuroblastoma. CD38 is used as one of the plasma cell markers and its ligand is CD31 molecules.
Highlight	<p>Related Antibody Duos and Panels:</p> <p>ARG30306 Pro-B Cell Marker Antibody panel (CD19, CD34, CD38, CD40, CD45) (FACS) ARG30307 Pre-B Cell Marker Antibody Panel (CD19, CD25, CD38, CD40, CD45) (FACS)</p> <p>Related products: CD38 antibodies; CD38 Duos / Panels; Anti-Rabbit IgG secondary antibodies;</p> <p>Related news: Lymphoma</p>
Research Area	Cancer antibody; Developmental Biology antibody; Immune System antibody; Metabolism antibody; Pro-B Cell Marker antibody; Pre-B Cell Marker antibody
Cellular Localization	Membrane

Images



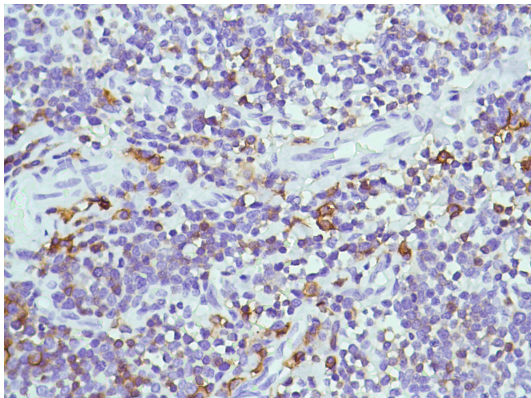
ARG52764 anti-CD38 antibody [SP149] IHC-P image

Immunohistochemistry: Human Tonsil stained with CD38 antibody [SP149] (ARG52764)



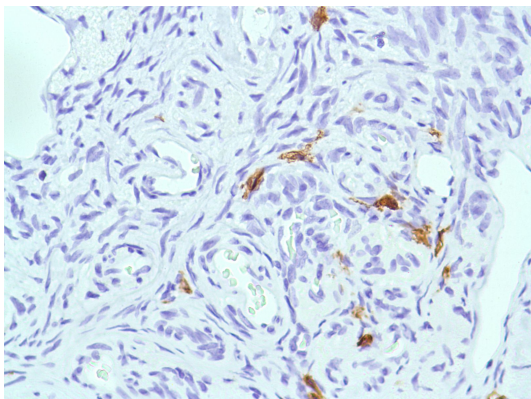
ARG52764 anti-CD38 antibody [SP149] IHC-P image

Immunohistochemistry: Human Spleen stained with CD38 antibody [SP149] (ARG52764)



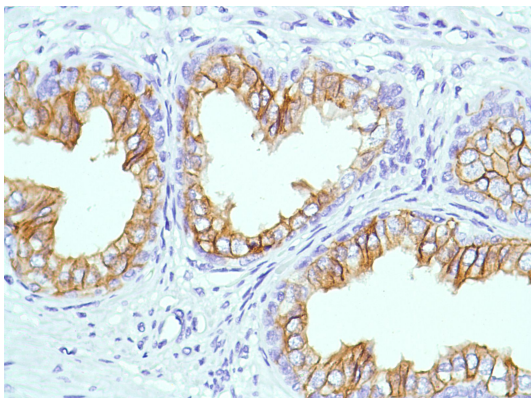
ARG52764 anti-CD38 antibody [SP149] IHC-P image

Immunohistochemistry: Human Thymus stained with CD38 antibody [SP149] (ARG52764)



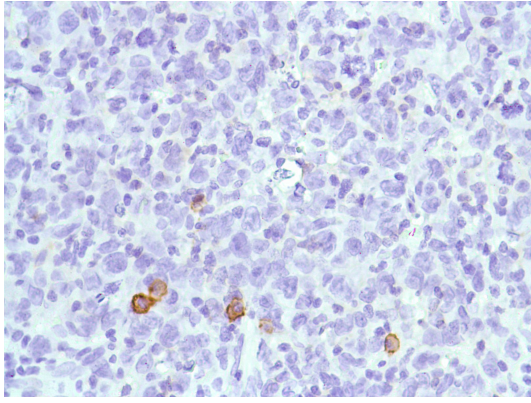
ARG52764 anti-CD38 antibody [SP149] IHC-P image

Immunohistochemistry: Human Ovary stained with CD38 antibody [SP149] (ARG52764)



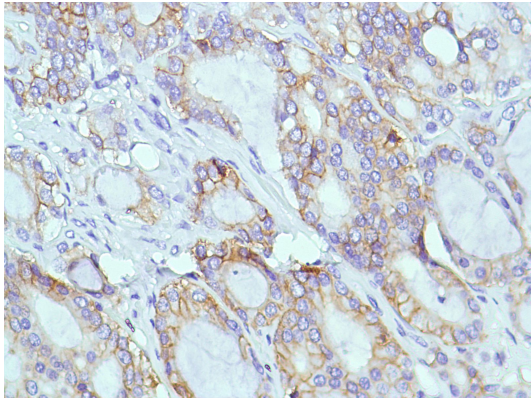
ARG52764 anti-CD38 antibody [SP149] IHC-P image

Immunohistochemistry: Human Prostate stained with CD38 antibody [SP149] (ARG52764)



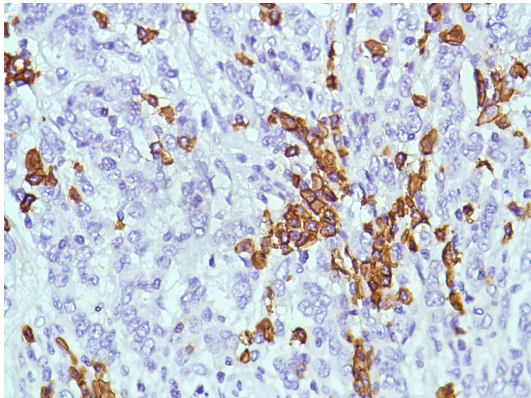
ARG52764 anti-CD38 antibody [SP149] IHC-P image

Immunohistochemistry: Human B Cell Lymphoma stained with CD38 antibody [SP149] (ARG52764)



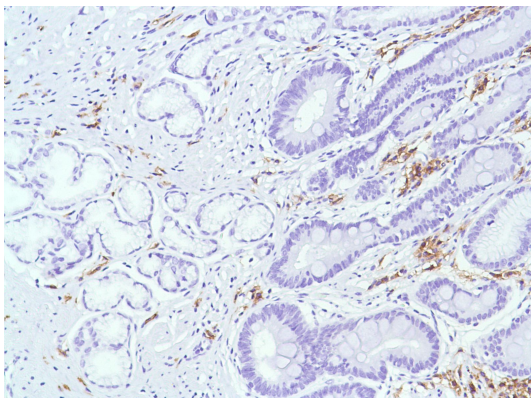
ARG52764 anti-CD38 antibody [SP149] IHC-P image

Immunohistochemistry: Human Prostate Adenocarcinoma stained with CD38 antibody [SP149] (ARG52764)



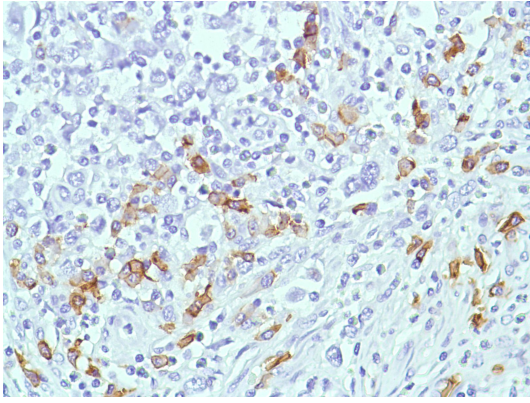
ARG52764 anti-CD38 antibody [SP149] IHC-P image

Immunohistochemistry: Human Stomach Adenocarcinoma stained with CD38 antibody [SP149] (ARG52764)



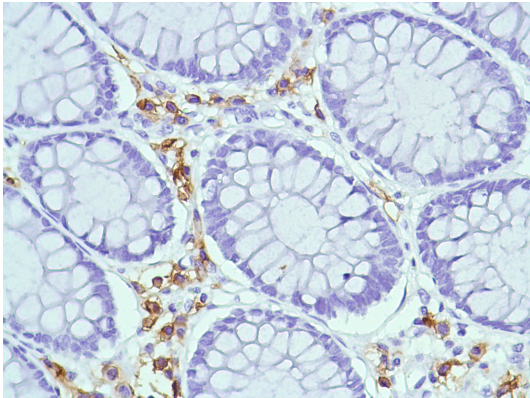
ARG52764 anti-CD38 antibody [SP149] IHC-P image

Immunohistochemistry: Human Stomach stained with CD38 antibody [SP149] (ARG52764)



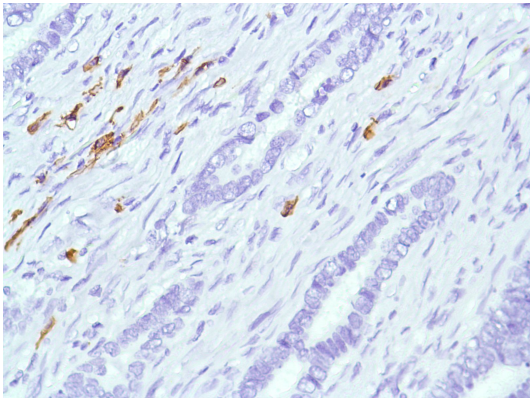
ARG52764 anti-CD38 antibody [SP149] IHC-P image

Immunohistochemistry: Human HK Lymphoma stained with CD38 antibody [SP149] (ARG52764)



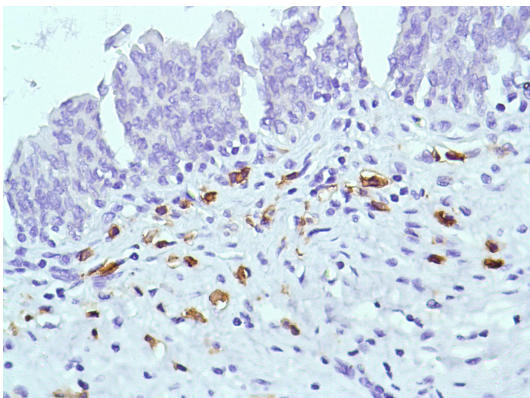
ARG52764 anti-CD38 antibody [SP149] IHC-P image

Immunohistochemistry: Human Colon stained with CD38 antibody [SP149] (ARG52764)



ARG52764 anti-CD38 antibody [SP149] IHC-P image

Immunohistochemistry: Human Colon Adenocarcinoma stained with CD38 antibody [SP149] (ARG52764)



ARG52764 anti-CD38 antibody [SP149] IHC-P image

Immunohistochemistry: Human Bladder stained with CD38 antibody [SP149] (ARG52764)
