

ARG52772
anti-CD42b antibody [SP202]Package: 100 µl
Store at: -20°C

Summary

Product Description	Rabbit Monoclonal antibody [SP202] recognizes CD42b
Tested Reactivity	Hu
Tested Application	IHC-P
Host	Rabbit
Clonality	Monoclonal
Clone	SP202
Isotype	IgG
Target Name	CD42b
Species	Human
Immunogen	Synthetic peptide from human CD42b protein.
Conjugation	Un-conjugated
Alternate Names	CD antigen CD42b; Antigen CD42b-alpha; DBPLT3; VWDP; CD42B; GP-Ib alpha; Glycoprotein Ibalpha; BDPLT1; BSS; CD42b-alpha; GPIbA; GPIb-alpha; Platelet glycoprotein Ib alpha chain; BDPLT3; GP1B

Application Instructions

Application table	Application	Dilution
	IHC-P	1:100
Application Note	* The dilutions indicate recommended starting dilutions and the optimal dilutions or concentrations should be determined by the scientist.	
Positive Control	Bone Marrow, Spleen	

Properties

Form	Liquid
Purification	Purified by protein A/G
Buffer	PBS (pH 7.6), 1% BSA and < 0.1% Sodium azide
Preservative	< 0.1% Sodium azide
Stabilizer	1% BSA
Storage instruction	For continuous use, store undiluted antibody at 2-8°C for up to a week. For long-term storage, aliquot and store at -20°C or below. Storage in frost free freezers is not recommended. Avoid repeated freeze/thaw cycles. Suggest spin the vial prior to opening. The antibody solution should be gently mixed before use.
Note	For laboratory research only, not for drug, diagnostic or other use.

Bioinformation

Database links

[GeneID: 2811 Human](#)

[Swiss-port # P07359 Human](#)

Background

CD42b or GPIb alpha is a surface membrane protein of platelets, megakaryocytes, and some tumor cells. It is a receptor for von Willebrand factor (VWF) and is involved in the binding of platelets to the blood vessel. CD42b is expressed by some human tumors such as megakaryoblastic leukemias and lung cancer.

Research Area

Cell Biology and Cellular Response antibody; Immune System antibody

Calculated Mw

72 kDa

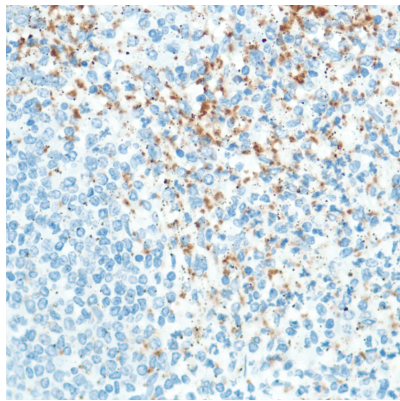
PTM

Glycocalicin, which is approximately coextensive with the extracellular part of the molecule, is cleaved off by calpain during platelet lysis.

Cellular Localization

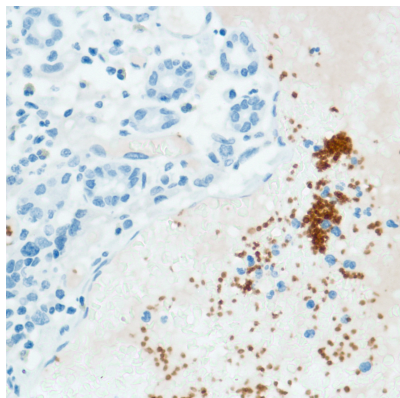
Membrane

Images



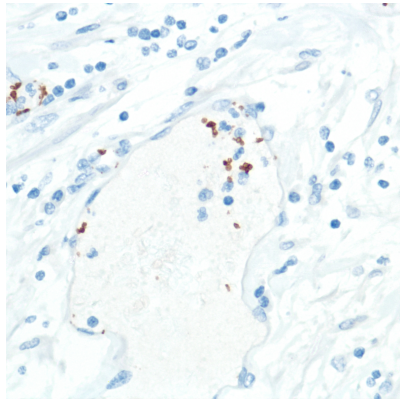
ARG52772 anti-CD42b antibody [SP202] IHC-P image

Immunohistochemistry: Human Spleen stained with CD42b antibody [SP202] (ARG52772)



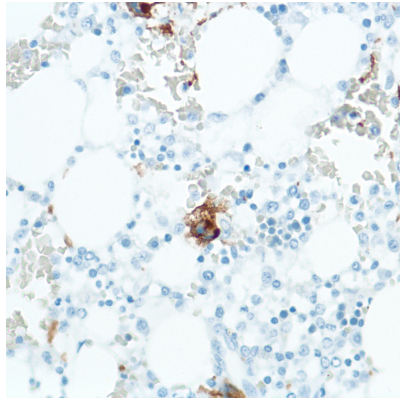
ARG52772 anti-CD42b antibody [SP202] IHC-P image

Immunohistochemistry: Human Stomach Adenocarcinoma stained with CD42b antibody [SP202] (ARG52772)



ARG52772 anti-CD42b antibody [SP202] IHC-P image

Immunohistochemistry: Human Pancreatic Adenocarcinoma stained with CD42b antibody [SP202] (ARG52772)



ARG52772 anti-CD42b antibody [SP202] IHC-P image

Immunohistochemistry: Human Bone Marrow stained with CD42b antibody [SP202] (ARG52772)
