

**ARG52873**  
**anti-Claudin 10 antibody**Package: 500 µl, 250 µl  
Store at: -20°C

### Summary

Product Description	Rabbit Polyclonal antibody recognizes Claudin 10
Tested Reactivity	Hu
Tested Application	IHC-P, WB
Host	Rabbit
Clonality	Polyclonal
Isotype	IgG
Target Name	Claudin 10
Species	Human
Immunogen	Synthetic peptide from C-terminus of human claudin-10 protein.
Conjugation	Un-conjugated
Alternate Names	OSP-L; CPETRL3; Claudin-10; OSP-like protein

### Application Instructions

Application table	Application	Dilution
	IHC-P	1:50
	WB	1:500 - 1:1000
Application Note	IHC-P: Antigen Retrieval: Boil tissue section in 10mM citrate buffer, pH 6.0 for 10 min followed by cooling at RT for 20 min. Incubation Time: 10 min at RT. * The dilutions indicate recommended starting dilutions and the optimal dilutions or concentrations should be determined by the scientist.	
Positive Control	Brain, Skeletal Muscle, Ovarian Carcinoma	

### Properties

Form	Liquid
Purification	Immunogen affinity purified
Buffer	PBS (pH 7.6), 1% BSA and < 0.1% Sodium azide
Preservative	< 0.1% Sodium azide
Stabilizer	1% BSA
Storage instruction	For continuous use, store undiluted antibody at 2-8°C for up to a week. For long-term storage, aliquot and store at -20°C or below. Storage in frost free freezers is not recommended. Avoid repeated freeze/thaw cycles. Suggest spin the vial prior to opening. The antibody solution should be gently mixed before use.

Note For laboratory research only, not for drug, diagnostic or other use.

## Bioinformation

---

Database links [GeneID: 9071 Human](#)

[Swiss-port # P78369 Human](#)

**Background** The claudin superfamily consists of many structurally related proteins in humans. These proteins, which include claudin 1 through 18, are important structural and functional components of tight junctions in paracellular transport. Claudins are located in both epithelial and endothelial cells in all tight junction-bearing tissues. Claudins, which consist of four trans-membrane domains and two extracellular loops, make up tight junction strands.

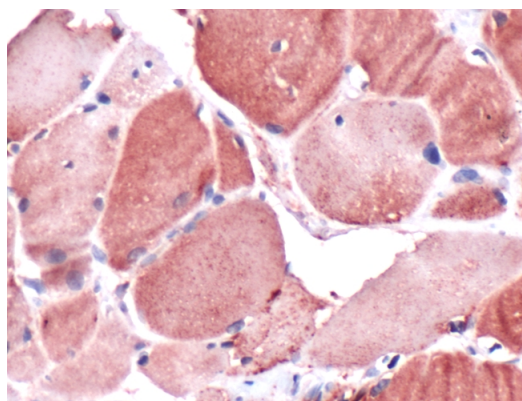
**Research Area** Signaling Transduction antibody

**Calculated Mw** 24 kDa

**Cellular Localization** cytoplasm

## Images

---



ARG52873 anti-Claudin 10 antibody IHC-P image

Immunohistochemistry: Human Skeletal Muscle stained with ARG52873 anti-Claudin 10 antibody.