

ARG52923 anti-Cyclin D1 antibody [SP4]

Package: 250 µl, 125 µl
Store at: -20°C

Summary

Product Description	Rabbit Monoclonal antibody [SP4] recognizes Cyclin D1
Tested Reactivity	Hu, Ms, Rat
Predict Reactivity	Dog
Tested Application	ICC/IF, IHC-P, WB
Host	Rabbit
Clonality	Monoclonal
Clone	SP4
Isotype	IgG
Target Name	Cyclin D1
Species	Human
Immunogen	Synthetic peptide from C-terminus of human cyclin D1.
Conjugation	Un-conjugated
Alternate Names	B-cell lymphoma 1 protein; PRAD1; U21B31; D11S287E; BCL-1; G1/S-specific cyclin-D1; BCL-1 oncogene; BCL1; PRAD1 oncogene

Application Instructions

Application table	Application	Dilution
	ICC/IF	Assay-Dependent
	IHC-P	1:100
	WB	1:25 - 1:1000
Application Note	IHC-P: Antigen Retrieval: Boil tissue section in 10mM citrate buffer, pH 6.0 for 10 min followed by cooling at RT for 20 min. Incubation Time: 30 min at RT. * The dilutions indicate recommended starting dilutions and the optimal dilutions or concentrations should be determined by the scientist.	
Positive Control	Mantle Cell Lymphoma, Tonsil, MCF-7	

Properties

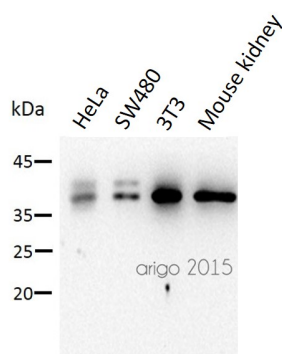
Form	Liquid
Buffer	Tissue culture supernatant in TBS (pH 7.5), 1% BSA and < 0.1% Sodium azide
Preservative	< 0.1% Sodium azide
Stabilizer	1% BSA

Storage instruction	For continuous use, store undiluted antibody at 2-8°C for up to a week. For long-term storage, aliquot and store at -20°C or below. Storage in frost free freezers is not recommended. Avoid repeated freeze/thaw cycles. Suggest spin the vial prior to opening. The antibody solution should be gently mixed before use.
Note	For laboratory research only, not for drug, diagnostic or other use.

Bioinformation

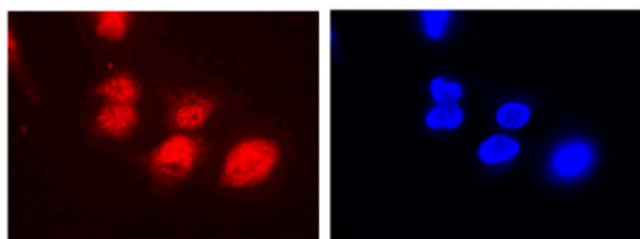
Background	Cyclin D1 or PRAD-1 or bcl-1 is one of the key cell cycle regulators, and functions in association with cdk4 and / or cdk6 by phosphorylating the Rb protein. It is a putative proto-oncogene overexpressed in a wide variety of human neoplasms including mantle cell lymphomas (MCL).
Highlight	Related products: Cyclin D1 antibodies ; Anti-Rabbit IgG secondary antibodies ; Related news: Lymphoma
Research Area	Cancer antibody; Cell Biology and Cellular Response antibody; Gene Regulation antibody
Calculated Mw	34 kDa
PTM	Phosphorylation at Thr-286 by MAP kinases is required for ubiquitination and degradation following DNA damage. It probably plays an essential role for recognition by the FBXO31 component of SCF (SKP1-cullin-F-box) protein ligase complex. Ubiquitinated, primarily as 'Lys-48'-linked polyubiquitination. Ubiquitinated by a SCF (SKP1-CUL1-F-box protein) ubiquitin-protein ligase complex containing FBXO4 and CRYAB. Following DNA damage it is ubiquitinated by some SCF (SKP1-cullin-F-box) protein ligase complex containing FBXO31. SCF-type ubiquitination is dependent on Thr-286 phosphorylation (By similarity). Ubiquitinated also by UHRF2 apparently in a phosphorylation-independent manner. Ubiquitination leads to its degradation and G1 arrest. Deubiquitinated by USP2; leading to its stabilization.
Cellular Localization	Nucleus

Images



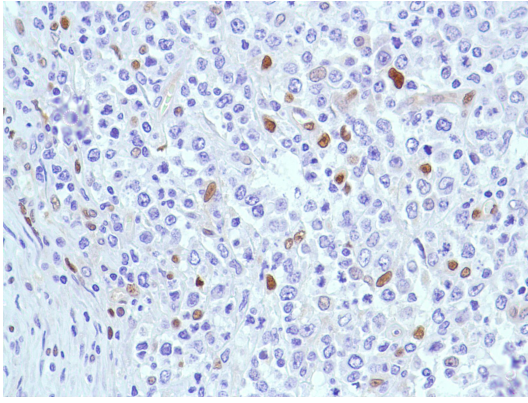
ARG52923 anti-Cyclin D1 antibody [SP4] WB image

Western blot: 30 µg of HeLa, SW480, 3T3, and Mouse kidney lysates stained with ARG52923 anti-Cyclin D1 antibody [SP4] at 1:500 dilution.



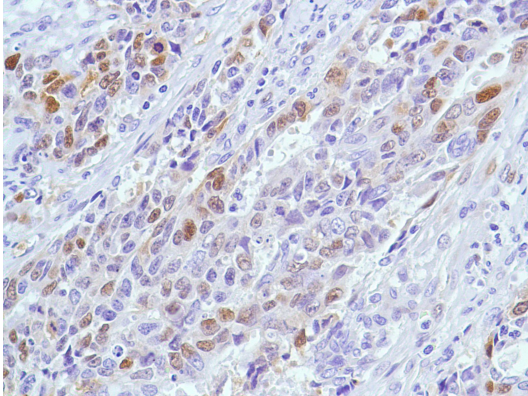
ARG52923 anti-Cyclin D1 antibody [SP4] ICC/IF image

Immunofluorescence: H1793 cells were fixed with cold methanol:acetone (1:1) for 5 minutes at -20°C, permeabilized with 0.3% Triton X-100 for 30 min at RT then blocked with 1% goat serum for 30 min at RT. Cells were stained with ARG52923 anti-Cyclin D1 antibody [SP4] (red) at 1:100 dilution for 1 hour at RT and DAPI (blue) was used as the nuclear counter stain.



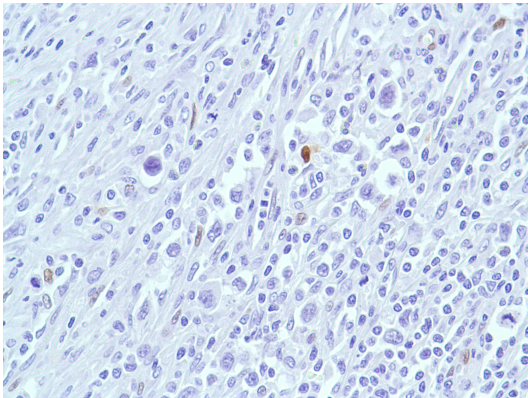
ARG52923 anti-Cyclin D1 antibody [SP4] IHC-P image

Immunohistochemistry: Human B Cell Lymphoma stained with Cyclin D1 antibody [SP4] (ARG52923)



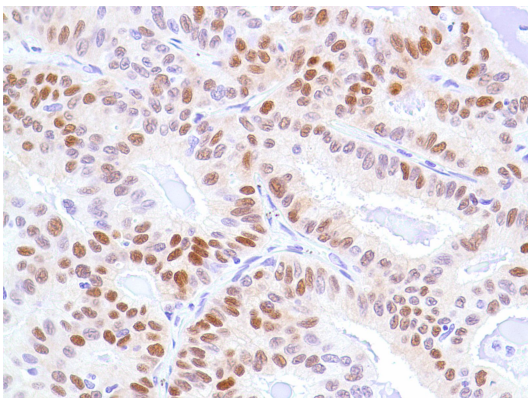
ARG52923 anti-Cyclin D1 antibody [SP4] IHC-P image

Immunohistochemistry: Human Endometrial Adenocarcinoma stained with Cyclin D1 antibody [SP4] (ARG52923)



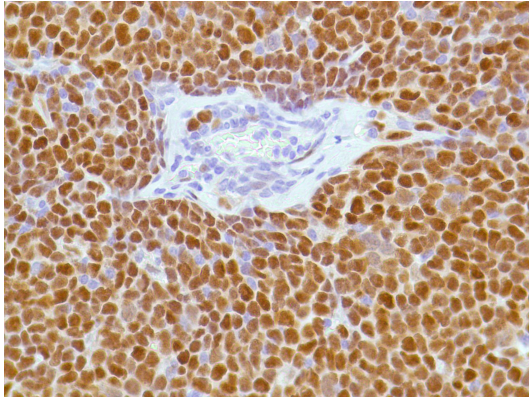
ARG52923 anti-Cyclin D1 antibody [SP4] IHC-P image

Immunohistochemistry: Human HK Lymphoma stained with Cyclin D1 antibody [SP4] (ARG52923)



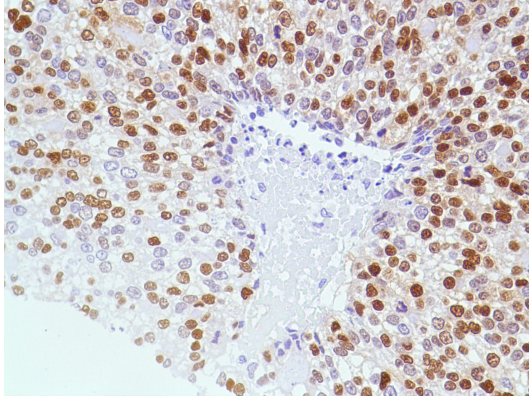
ARG52923 anti-Cyclin D1 antibody [SP4] IHC-P image

Immunohistochemistry: Human Lung Adenocarcinoma stained with Cyclin D1 antibody [SP4] (ARG52923)



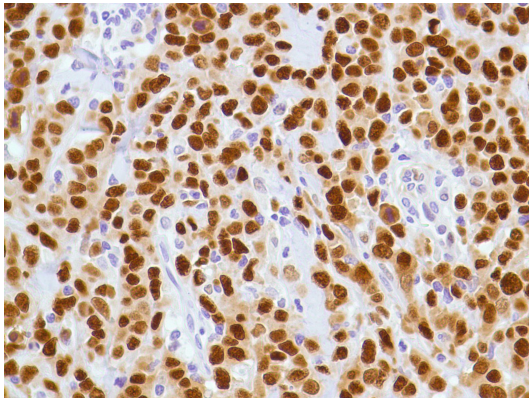
ARG52923 anti-Cyclin D1 antibody [SP4] IHC-P image

Immunohistochemistry: Human Mantle Cell Lymphoma stained with Cyclin D1 antibody [SP4] (ARG52923)



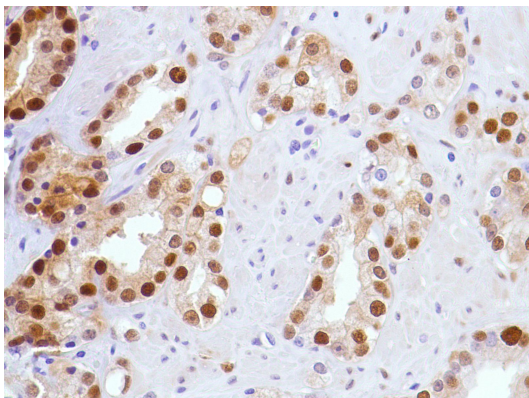
ARG52923 anti-Cyclin D1 antibody [SP4] IHC-P image

Immunohistochemistry: Human Ovarian Adenocarcinoma stained with Cyclin D1 antibody [SP4] (ARG52923)



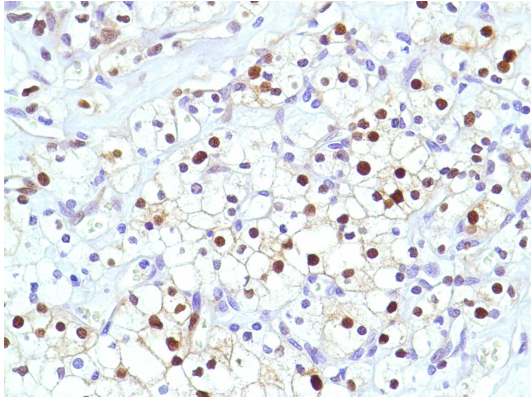
ARG52923 anti-Cyclin D1 antibody [SP4] IHC-P image

Immunohistochemistry: Human Pancreatic Adenocarcinoma stained with Cyclin D1 antibody [SP4] (ARG52923)



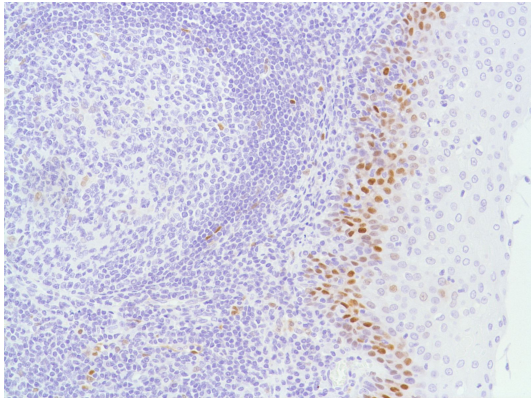
ARG52923 anti-Cyclin D1 antibody [SP4] IHC-P image

Immunohistochemistry: Human Prostate Adenocarcinoma stained with Cyclin D1 antibody [SP4] (ARG52923)



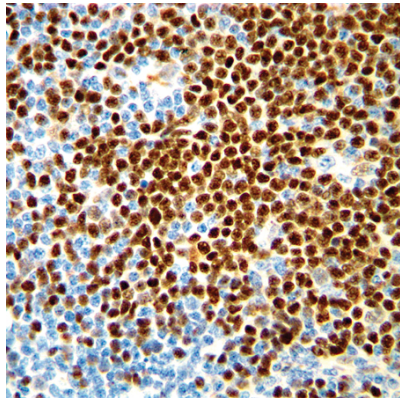
ARG52923 anti-Cyclin D1 antibody [SP4] IHC-P image

Immunohistochemistry: Human Renal Cell Carcinoma stained with Cyclin D1 antibody [SP4] (ARG52923)



ARG52923 anti-Cyclin D1 antibody [SP4] IHC-P image

Immunohistochemistry: Human Tonsil stained with Cyclin D1 antibody [SP4] (ARG52923)



ARG52923 anti-Cyclin D1 antibody [SP4] IHC-P image

Immunohistochemistry: Human Mantle Cell Lymphoma stained with Cyclin D1 antibody [SP4] (ARG52923)
