

ARG52941 anti-Desmin antibody

Package: 500 µl, 250 µl
Store at: -20°C

Summary

Product Description	Rabbit Polyclonal antibody recognizes Desmin
Tested Reactivity	Hu, Ms, Rat
Tested Application	IHC-P, IP, WB
Host	Rabbit
Clonality	Polyclonal
Isotype	IgG
Target Name	Desmin
Species	Human
Immunogen	Synthetic peptide mapping near the C-terminus of human desmin.
Conjugation	Un-conjugated
Alternate Names	LGMD2R; CSM1; Desmin; CSM2

Application Instructions

Application table	Application	Dilution
	IHC-P	1:200
	IP	Assay-Dependent
	WB	Assay-dependent
Application Note	IHC-P: Incubation Time: 10 min at RT. * The dilutions indicate recommended starting dilutions and the optimal dilutions or concentrations should be determined by the scientist.	
Positive Control	Sarcomas, Skeletal Muscle	

Properties

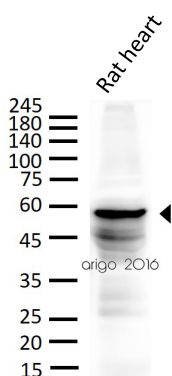
Form	Liquid
Purification	Immunogen affinity purified
Buffer	PBS (pH 7.6), 1% BSA and < 0.1% Sodium azide
Preservative	< 0.1% Sodium azide
Stabilizer	1% BSA
Storage instruction	For continuous use, store undiluted antibody at 2-8°C for up to a week. For long-term storage, aliquot and store at -20°C or below. Storage in frost free freezers is not recommended. Avoid repeated freeze/thaw cycles. Suggest spin the vial prior to opening. The antibody solution should be gently mixed before use.

Note For laboratory research only, not for drug, diagnostic or other use.

Bioinformation

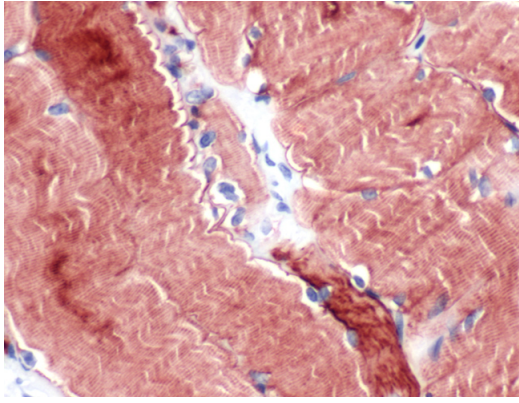
Gene Full Name	desmin
Background	Desmin is a muscle-specific class III intermediate filament. Homopolymers of this protein form a stable intracytoplasmic filamentous network connecting myofibrils to each other and to the plasma membrane. Mutations in this gene are associated with desmin-related myopathy, a familial cardiac and skeletal myopathy (CSM), and with distal myopathies. [provided by RefSeq, Jul 2008]
Function	Desmin: Muscle-specific type III intermediate filament essential for proper muscular structure and function. Plays a crucial role in maintaining the structure of sarcomeres, inter-connecting the Z-disks and forming the myofibrils, linking them not only to the sarcolemmal cytoskeleton, but also to the nucleus and mitochondria, thus providing strength for the muscle fiber during activity (PubMed:25358400). In adult striated muscle they form a fibrous network connecting myofibrils to each other and to the plasma membrane from the periphery of the Z-line structures (PubMed:24200904, PubMed:25394388, PubMed:26724190). May act as a sarcomeric microtubule-anchoring protein: specifically associates with deetyrosinated tubulin-alpha chains, leading to buckled microtubules and mechanical resistance to contraction. Contributes to the transcriptional regulation of the NKX2-5 gene in cardiac progenitor cells during a short period of cardiomyogenesis and in cardiac side population stem cells in the adult. Plays a role in maintaining an optimal conformation of nebulin (NEB) on heart muscle sarcomeres to bind and recruit cardiac alpha-actin. [UniProt]
Highlight	Related Antibody Duos and Panels: ARG30051 Smooth Muscle Marker Antibody Duo (Desmin, SMA) ARG30142 Cardiomyocyte Cell Surface Marker Antibody Panel (Cx43, Desmin, SIRP) Related products: Desmin antibodies ; Desmin Duos / Panels ; Anti-Rabbit IgG secondary antibodies ; Related news: Pericytes, new therapeutic target for Alzheimer's disease?
Research Area	Cancer antibody; Cell Biology and Cellular Response antibody; Developmental Biology antibody; Signaling Transduction antibody; Smooth Muscle Marker antibody; Cardiomyocyte Cell Surface Marker antibody; Mural Cell Marker antibody; Microvascular Density Study antibody
Calculated Mw	54 kDa
PTM	ADP-ribosylation prevents ability to form intermediate filaments.
Cellular Localization	Cytoplasm

Images



ARG52941 anti-Desmin antibody WB image

Western blot: 30 µg of Rat heart lysate stained with ARG52941 anti-Desmin antibody at 1:500 dilution.



ARG52941 anti-Desmin antibody IHC-P image

Immunohistochemistry: Human Skeletal Muscle stained with ARG52941 anti-Desmin antibody