

ARG53174 anti-Cytokeratin 10 antibody

Package: 250 µl
Store at: -20°C

Summary

Product Description	Rabbit Polyclonal antibody recognizes Cytokeratin 10
Tested Reactivity	Hu
Tested Application	IHC-P, WB
Host	Rabbit
Clonality	Polyclonal
Isotype	IgG
Target Name	Cytokeratin 10
Species	Human
Immunogen	Synthetic peptide derived from C-terminus of Human Cytokeratin 10 protein.
Conjugation	Un-conjugated
Alternate Names	KPP; K10; CK-10; BIE; Keratin, type I cytoskeletal 10; Cytokeratin-10; CK10; BCIE; Keratin-10; EHK

Application Instructions

Application table	Application	Dilution
	IHC-P	1:100
	WB	1:100 - 1:10000
Application Note	IHC-P: Antigen Retrieval: Boil tissue section in EDTA buffer, pH 8.0 for 10 min followed by cooling at room temperature for 20 min. Incubation Time: 30 min at RT. * The dilutions indicate recommended starting dilutions and the optimal dilutions or concentrations should be determined by the scientist.	
Positive Control	Skin	

Properties

Form	Liquid
Purification	Immunogen affinity purified
Buffer	PBS (pH 7.6), 1% BSA and < 0.1% Sodium azide
Preservative	< 0.1% Sodium azide
Stabilizer	1% BSA
Storage instruction	For continuous use, store undiluted antibody at 2-8°C for up to a week. For long-term storage, aliquot and store at -20°C or below. Storage in frost free freezers is not recommended. Avoid repeated freeze/thaw cycles. Suggest spin the vial prior to opening. The antibody solution should be gently mixed before use.

Note For laboratory research only, not for drug, diagnostic or other use.

Bioinformation

Database links [GeneID: 3858 Human](#)

[Swiss-port # P13645 Human](#)

Background Cytokeratin 10 is a member of the type I (acidic) cytokeratin family, which belongs to the superfamily of intermediate filament (IF) proteins. Keratins are heteropolymeric structural proteins which form the intermediate filament. These filaments, along with actin microfilaments and microtubules, compose the cytoskeleton of epithelial cells. Mutations in this gene are associated with epidermolytic hyperkeratosis. This gene is located within a cluster of keratin family members on chromosome 17q21. [provided by RefSeq, Jul 2008]

Function Cytokeratin 10 plays a role in the establishment of the epidermal barrier on plantar skin.

(Microbial infection) Acts as a mediator of *S.aureus* adherence to desquamated nasal epithelial cells via clfB, and hence may play a role in nasal colonization.

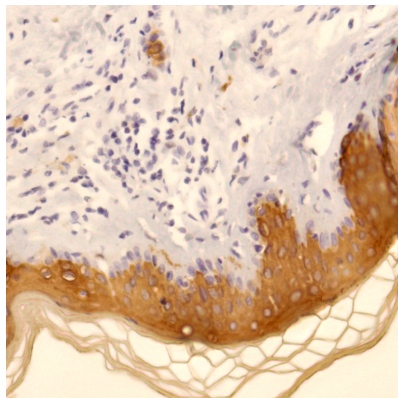
(Microbial infection) Binds *S.pneumoniae* PsrP, mediating adherence of the bacteria to lung cell lines. Reduction of levels of KRT10 keratin decrease adherence, overexpression increases adherence. Neither protein has to be glycosylated for the interaction to occur. [UniProt]

Research Area Signaling Transduction antibody

Calculated Mw 59 kDa

Cellular Localization Cytoplasm

Images



ARG53174 anti-Cytokeratin 10 antibody IHC-P image

Immunohistochemistry: Human Skin stained with ARG53174 anti-Cytokeratin 10 antibody.