

ARG53194 anti-Cytokeratin 20 antibody

Package: 500 µl
Store at: -20°C

Summary

Product Description	Rabbit Polyclonal antibody recognizes Cytokeratin 20
Tested Reactivity	Hu
Tested Application	IHC-P
Host	Rabbit
Clonality	Polyclonal
Isotype	IgG
Target Name	Cytokeratin 20
Species	Human
Immunogen	Synthetic peptide corresponding to C-terminus of Human Cytokeratin 20.
Conjugation	Un-conjugated
Alternate Names	KRT21; CK20; K20; CD20; CK-20; Keratin-20; Cytokeratin-20; Keratin, type I cytoskeletal 20; Protein IT

Application Instructions

Application table	Application	Dilution
	IHC-P	1:200
Application Note	IHC-P: Antigen Retrieval: Boil tissue section in 10mM citrate buffer, pH 6.0 for 10 min followed by cooling at RT for 20 min. Incubation Time: 30 min at RT. * The dilutions indicate recommended starting dilutions and the optimal dilutions or concentrations should be determined by the scientist.	
Positive Control	Colon Carcinoma	

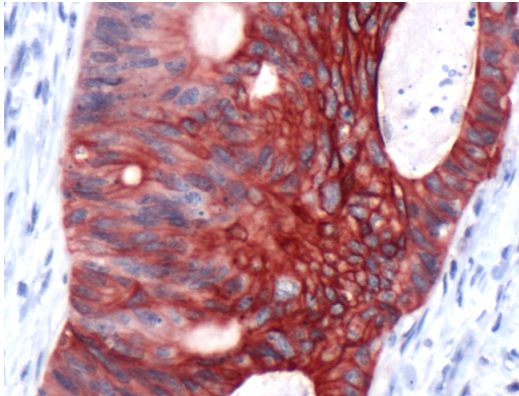
Properties

Form	Liquid
Purification	Immunogen affinity purified
Buffer	PBS (pH 7.6), 1% BSA and < 0.1% Sodium azide
Preservative	< 0.1% Sodium azide
Stabilizer	1% BSA
Storage instruction	For continuous use, store undiluted antibody at 2-8°C for up to a week. For long-term storage, aliquot and store at -20°C or below. Storage in frost free freezers is not recommended. Avoid repeated freeze/thaw cycles. Suggest spin the vial prior to opening. The antibody solution should be gently mixed before use.
Note	For laboratory research only, not for drug, diagnostic or other use.

Bioinformation

Database links	GeneID: 54474 Human Swiss-port # P35900 Human
Background	Cytokeratin 20 is a member of the keratin family. The keratins are intermediate filament proteins responsible for the structural integrity of epithelial cells and are subdivided into cytokeratins and hair keratins. The type I cytokeratins consist of acidic proteins which are arranged in pairs of heterotypic keratin chains. This cytokeratin is a major cellular protein of mature enterocytes and goblet cells and is specifically expressed in the gastric and intestinal mucosa. The type I cytokeratin genes are clustered in a region of chromosome 17q12-q21. [provided by RefSeq, Jul 2008]
Function	Cytokeratin 20 plays a significant role in maintaining keratin filament organization in intestinal epithelia. When phosphorylated, plays a role in the secretion of mucin in the small intestine. [UniProt]
Research Area	CK7/CK20 Carcinoma Study antibody
Calculated Mw	48 kDa
PTM	Hyperphosphorylation at Ser-13 occurs during the early stages of apoptosis but becomes less prominent during the later stages. Phosphorylation at Ser-13 also increases in response to stress brought on by cell injury (By similarity). Proteolytically cleaved by caspases during apoptosis. Cleavage occurs at Asp-228.
Cellular Localization	Cytoplasm

Images



ARG53194 anti-Cytokeratin 20 antibody IHC-P image

Immunohistochemistry: Human Colon Adenocarcinoma stained with ARG53194 anti-Cytokeratin 20 antibody.