

## ARG53200 anti-Cytokeratin 5 antibody

Package: 500 µl  
Store at: -20°C

### Summary

Product Description	Rabbit Polyclonal antibody recognizes Cytokeratin 5
Tested Reactivity	Hu
Tested Application	IHC-P
Host	Rabbit
Clonality	Polyclonal
Isotype	IgG
Target Name	Cytokeratin 5
Species	Human
Immunogen	Synthetic peptide corresponding to C-terminus of Human Cytokeratin 5.
Conjugation	Un-conjugated
Alternate Names	DDD1; 58 kDa cytokeratin; Keratin, type II cytoskeletal 5; EBS2; Keratin-5; Cytokeratin-5; CK5; KRT5A; K5; CK-5; Type-II keratin Kb5; DDD

### Application Instructions

Application table	Application	Dilution
	IHC-P	1:100
Application Note	IHC-P: Antigen Retrieval: Boil tissue section in 10mM citrate buffer, pH 6.0 for 10 min followed by cooling at RT for 20 min. Incubation Time: 30 min at RT. * The dilutions indicate recommended starting dilutions and the optimal dilutions or concentrations should be determined by the scientist.	
Positive Control	Breast, Mesothelioma, Prostate, Skin	

### Properties

Form	Liquid
Purification	Immunogen affinity purified
Buffer	PBS (pH 7.6), 1% BSA and < 0.1% Sodium azide
Preservative	< 0.1% Sodium azide
Stabilizer	1% BSA
Storage instruction	For continuous use, store undiluted antibody at 2-8°C for up to a week. For long-term storage, aliquot and store at -20°C or below. Storage in frost free freezers is not recommended. Avoid repeated freeze/thaw cycles. Suggest spin the vial prior to opening. The antibody solution should be gently mixed before use.
Note	For laboratory research only, not for drug, diagnostic or other use.

## Bioinformation

---

Database links

[GeneID: 3852 Human](#)

[Swiss-port # P13647 Human](#)

Background

Cytokeratin 5 is a member of the keratin gene family. The type II cytokeratins consist of basic or neutral proteins which are arranged in pairs of heterotypic keratin chains coexpressed during differentiation of simple and stratified epithelial tissues. This type II cytokeratin is specifically expressed in the basal layer of the epidermis with family member KRT14. Mutations in these genes have been associated with a complex of diseases termed epidermolysis bullosa simplex. The type II cytokeratins are clustered in a region of chromosome 12q12-q13. [provided by RefSeq, Jul 2008]

Research Area

Signaling Transduction antibody

Calculated Mw

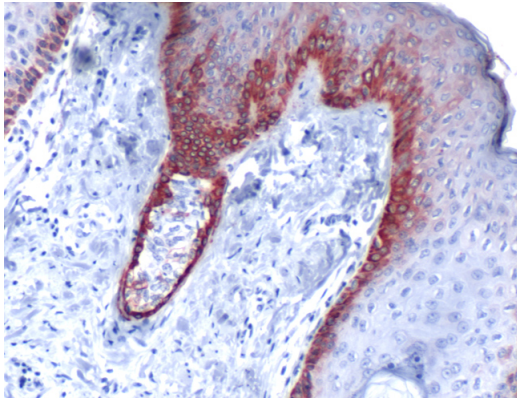
62 kDa

Cellular Localization

Cytoplasm

## Images

---



ARG53200 anti-Cytokeratin 5 antibody IHC-P image

Immunohistochemistry: Human Skin stained with ARG53200 anti-Cytokeratin 5 antibody.