

ARG53248 anti-LMO2 antibody [SP51]

Package: 100 µl
Store at: -20°C

Summary

Product Description	Rabbit Monoclonal antibody [SP51] recognizes LMO2
Tested Reactivity	Hu
Tested Application	FACS, IHC-P, WB
Host	Rabbit
Clonality	Monoclonal
Clone	SP51
Isotype	IgG
Target Name	LMO2
Species	Human
Immunogen	Synthetic peptide corresponding to near N-terminus of human LMO2 protein.
Conjugation	Un-conjugated
Alternate Names	RHOM2; LMO-2; TTG2; LIM domain only protein 2; T-cell translocation protein 2; RBTN2; Rhombotin-2; Cysteine-rich protein TTG-2; RBTNL1

Application Instructions

Application table	Application	Dilution
	FACS	Assay-Dependent
	IHC-P	1:100
	WB	1:25
Application Note	IHC-P: Antigen Retrieval: Boil tissue section in 10mM citrate buffer, pH 6.0 for 10 min followed by cooling at RT for 20 min. Incubation Time: 30 min at RT. * The dilutions indicate recommended starting dilutions and the optimal dilutions or concentrations should be determined by the scientist.	
Positive Control	Hodgkin's Lymphoma, Tonsil, Ramos	

Properties

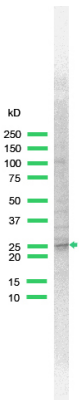
Form	Liquid
Purification	Purified by protein A/G
Buffer	PBS (pH 7.6), 1% BSA and < 0.1% Sodium azide
Preservative	< 0.1% Sodium azide
Stabilizer	1% BSA

Storage instruction	For continuous use, store undiluted antibody at 2-8°C for up to a week. For long-term storage, aliquot and store at -20°C or below. Storage in frost free freezers is not recommended. Avoid repeated freeze/thaw cycles. Suggest spin the vial prior to opening. The antibody solution should be gently mixed before use.
Note	For laboratory research only, not for drug, diagnostic or other use.

Bioinformation

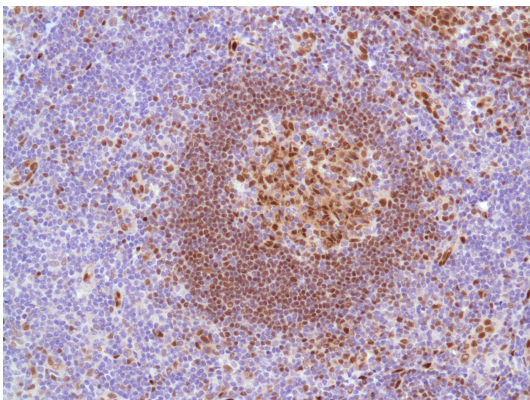
Database links	GeneID: 4005 Human Swiss-port # P25791 Human
Background	LMO2 encodes a cysteine-rich, two LIM-doman protein that is required for yolk sac erythropoiesis. The LMO2 protein has a central and crucial role in hematopoietic development and is highly conserved. The LMO2 transcription start site is located approximately 25 kb downstream from the 11p13 T-cell translocation cluster (11p13 ttc), where T-cell acute lymphoblastic leukemia-specific translocations occur.
Research Area	Cell Biology and Cellular Response antibody
Calculated Mw	18 kDa
Cellular Localization	Nucleus

Images



ARG53248 anti-LMO2 antibody [SP51] WB image

Western Blot: Ramos stained with LMO2 antibody [SP51] (ARG53248)



ARG53248 anti-LMO2 antibody [SP51] IHC-P image

Immunohistochemistry: Human Tonsil stained with LMO2 antibody [SP51] (ARG53248)