

ARG53688 anti-TGF beta 3 antibody

Package: 500 µl
Store at: -20°C

Summary

Product Description	Rabbit Polyclonal antibody recognizes TGF beta 3
Tested Reactivity	Hu, Ms, Rat
Tested Application	IHC-P, IP, WB
Specificity	The antibody majorly reacts to TGF beta 3, but also reacts to TGF beta 2 with weak signals.
Host	Rabbit
Clonality	Polyclonal
Isotype	IgG
Target Name	TGF beta 3
Species	Human
Immunogen	Synthetic peptide derived from C-terminus of the precursor form of human TGF beta 3 (CYLR SADTTHSTVLGLYNTLNPEASAS).
Conjugation	Un-conjugated
Alternate Names	TGF-beta3; RNHF; LAP; ARVD; ARVD1; Transforming growth factor beta-3; TGF-beta-3

Application Instructions

Application table	Application	Dilution
	IHC-P	1:100
	IP	Assay-Dependent
	WB	Assay-dependent
Application Note	IHC-P: Antigen Retrieval: Boil tissue section in 10mM citrate buffer, pH 6.0 for 10 min followed by cooling at RT for 20 min. Incubation Time: 10 min at RT. * The dilutions indicate recommended starting dilutions and the optimal dilutions or concentrations should be determined by the scientist.	
Positive Control	Placenta	

Properties

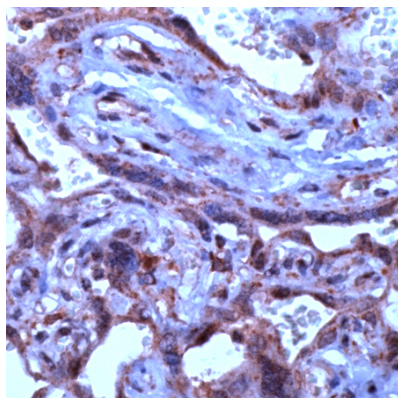
Form	Liquid
Purification	Immunogen affinity purified
Buffer	PBS (pH 7.6), 1% BSA and < 0.1% Sodium azide
Preservative	< 0.1% Sodium azide
Stabilizer	1% BSA

Storage instruction	For continuous use, store undiluted antibody at 2-8°C for up to a week. For long-term storage, aliquot and store at -20°C or below. Storage in frost free freezers is not recommended. Avoid repeated freeze/thaw cycles. Suggest spin the vial prior to opening. The antibody solution should be gently mixed before use.
Note	For laboratory research only, not for drug, diagnostic or other use.

Bioinformation

Database links	GeneID: 25717 Rat GeneID: 7043 Human Swiss-port # P10600 Human Swiss-port # Q07258 Rat
Gene Symbol	TGFB3
Gene Full Name	transforming growth factor, beta 3
Background	This gene encodes a member of the TGF-beta family of proteins. The encoded protein is secreted and is involved in embryogenesis and cell differentiation. Defects in this gene are a cause of familial arrhythmogenic right ventricular dysplasia 1. [provided by RefSeq, Mar 2009]
Function	Involved in embryogenesis and cell differentiation. [UniProt]
Research Area	Cancer antibody; Developmental Biology antibody; Signaling Transduction antibody
Calculated Mw	12.5 kDa (reduced); 25 kDa (non-reduced)
PTM	The precursor is cleaved into mature TGF-beta-3 and LAP, which remains non-covalently linked to mature TGF-beta-3 rendering it inactive.
Cellular Localization	Cytoplasm

Images



ARG53688 anti-Transforming Growth Factor beta 3 antibody IHC-P image

Immunohistochemistry: Human Placenta stained with ARG53688 anti-TGF beta 3 antibody.