

## ARG53817 anti-CD29 / Integrin beta 1 antibody [MEM-101A] (PE)

Package: 100 tests  
Store at: 4°C

### Summary

Product Description	PE-conjugated Mouse Monoclonal antibody [MEM-101A] recognizes CD29 / Integrin beta 1
Tested Reactivity	Hu, Dog, Pig
Species Does Not React With	Ms
Tested Application	FACS
Specificity	The clone MEM-101A reacts with CD29 (integrin beta1 chain), a 130 kDa single chain type I glycoprotein expressed as a heterodimer (non-covalently associated with the integrin alpha subunits 1-6). CD29 is broadly expressed on majority of hematopoietic and non-hematopoietic cells (leukocytes, platelets, fibroblasts, endothelial cells, epithelial cells and mast cells). HLDA VI; WS Code AS A048
Host	Mouse
Clonality	Monoclonal
Clone	MEM-101A
Isotype	IgG1
Target Name	CD29 / Integrin beta 1
Species	Human
Immunogen	Raji Burkitt's lymphoma cell line
Conjugation	PE
Alternate Names	CD29; Glycoprotein IIa; Fibronectin receptor subunit beta; VLAB; MSK12; CD antigen CD29; FNRB; GPIIA; VLA-4 subunit beta; VLA-BETA; MDF2; Integrin beta-1

### Application Instructions

Application table	Application	Dilution
	FACS	20 µl / 10 <sup>6</sup> cells
Application Note	* The dilutions indicate recommended starting dilutions and the optimal dilutions or concentrations should be determined by the scientist.	

### Properties

Form	Liquid
Purification Note	The purified antibody is conjugated with R-Phycoerythrin (PE) under optimum conditions. The conjugate is purified by size-exclusion chromatography and adjusted for direct use. No reconstitution is necessary.
Buffer	PBS, 15 mM Sodium azide and 0.2% (w/v) high-grade protease free BSA
Preservative	15 mM Sodium azide
Stabilizer	0.2% (w/v) high-grade protease free BSA

Storage instruction	Aliquot and store in the dark at 2-8°C. Keep protected from prolonged exposure to light. Avoid repeated freeze/thaw cycles. Suggest spin the vial prior to opening. The antibody solution should be gently mixed before use.
Note	For laboratory research only, not for drug, diagnostic or other use.

## Bioinformation

Database links	<a href="#">GeneID: 3688 Human</a> <a href="#">GeneID: 397019 Pig</a> <a href="#">Swiss-port # P05556 Human</a> <a href="#">Swiss-port # Q9GLP0 Pig</a>
Gene Symbol	ITGB1
Gene Full Name	integrin, beta 1 (fibronectin receptor, beta polypeptide, antigen CD29 includes MDF2, MSK12)
Background	<p>CD29 (beta1 integrin subunit, GPIIa) forms non-covalently linked heterodimers with at least 6 different alpha chains (alpha1-alpha6, CD49a-f) determining the binding properties of beta1 (VLA) integrins. These integrins mediate cell adhesion to collagen, fibronectin, laminin and other extracellular matrix (ECM) components. This interaction hinders cell death, whereas disruption of anchorage to ECM leads to apoptosis. Decreased expression of most beta1 integrins correlates with acquiring multidrug resistance of tumour cells during selection in presence of antitumour drug. In platelets, translocation of intracellular pool of beta1 integrins to the plasma membrane following thrombin stimulation. These integrins are also up-regulated in leukocytes during emigration and extravascular migration and appear to be critically involved in regulating the immune cell trafficking from blood to tissue, as well as in regulating tissue damage and disease symptoms related to inflammatory bowel disease. Through a beta1 integrin-dependent mechanism, fibronectin and type I collagen enhance cytokine secretion of human airway smooth muscle in response to IL-1beta.</p>
Function	<p>Integrins alpha-1/beta-1, alpha-2/beta-1, alpha-10/beta-1 and alpha-11/beta-1 are receptors for collagen. Integrins alpha-1/beta-1 and alpha-2/beta-2 recognize the proline-hydroxylated sequence G-F-P-G-E-R in collagen. Integrins alpha-2/beta-1, alpha-3/beta-1, alpha-4/beta-1, alpha-5/beta-1, alpha-8/beta-1, alpha-10/beta-1, alpha-11/beta-1 and alpha-V/beta-1 are receptors for fibronectin. Alpha-4/beta-1 recognizes one or more domains within the alternatively spliced CS-1 and CS-5 regions of fibronectin. Integrin alpha-5/beta-1 is a receptor for fibrinogen. Integrin alpha-1/beta-1, alpha-2/beta-1, alpha-6/beta-1 and alpha-7/beta-1 are receptors for laminin. Integrin alpha-4/beta-1 is a receptor for VCAM1. It recognizes the sequence Q-I-D-S in VCAM1. Integrin alpha-9/beta-1 is a receptor for VCAM1, cytotactin and osteopontin. It recognizes the sequence A-E-I-D-G-I-E-L in cytotactin. Integrin alpha-3/beta-1 is a receptor for epiligrin, thrombospondin and CSPG4. Alpha-3/beta-1 may mediate with LGALS3 the stimulation by CSPG4 of endothelial cells migration. Integrin alpha-V/beta-1 is a receptor for vitronectin. Beta-1 integrins recognize the sequence R-G-D in a wide array of ligands. Isoform 2 interferes with isoform 1 resulting in a dominant negative effect on cell adhesion and migration (in vitro). In case of HIV-1 infection, the interaction with extracellular viral Tat protein seems to enhance angiogenesis in Kaposi's sarcoma lesions. When associated with alpha-7/beta-1 integrin, regulates cell adhesion and laminin matrix deposition. Involved in promoting endothelial cell motility and angiogenesis. Involved in osteoblast compaction through the fibronectin fibrillogenesis cell-mediated matrix assembly process and the formation of mineralized bone nodules. May be involved in up-regulation of the activity of kinases such as PKC via binding to KRT1. Together with KRT1 and GNB2L1/RACK1, serves as a platform for SRC activation or inactivation. Plays a mechanistic adhesive role during telophase, required for the successful completion of cytokinesis. Integrin alpha-3/beta-1 provides a docking site for FAP (seprase) at invadopodia plasma membranes in a collagen-dependent manner and hence may participate in the adhesion, formation of invadopodia and matrix degradation processes, promoting cell invasion. Isoform 5: Isoform 5 displaces isoform 1 in striated muscles. [UniProt]</p>
Highlight	<p>Related products:  <a href="#">CD29 antibodies: Anti-Mouse IgG secondary antibodies:</a>  Related news:  <a href="#">Stem cell and the regenerative medicine: Ready for the patients</a></p>
Research Area	Developmental Biology antibody; Microbiology and Infectious Disease antibody; Neuroscience antibody; Signaling Transduction antibody

Calculated Mw

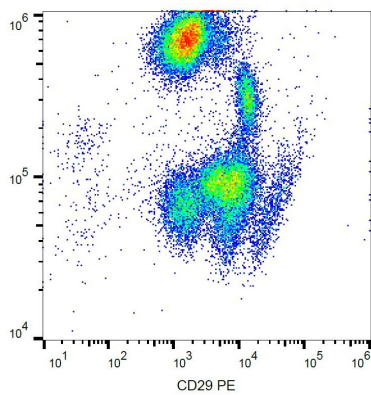
88 kDa

PTM

The cysteine residues are involved in intrachain disulfide bonds.

## Images

---



ARG53817 anti-CD29 / Integrin beta 1 antibody [MEM-101A] (PE)  
FACS image

Flow Cytometry: Human peripheral blood stained with ARG53817 anti-CD29 / Integrin beta 1 antibody [MEM-101A] (PE).