

ARG53924 anti-Cytokeratin (pan) antibody [C-11] (APC)

Package: 50 µg
Store at: 4°C

Summary

Product Description	Allophycocyanin-conjugated Mouse Monoclonal antibody [C-11] recognizes Cytokeratin (pan)
Tested Reactivity	Hu, Ms, Rat, Mamm
Tested Application	FACS
Specificity	The clone C-11 reacts with Cytokeratin peptides 4, 5, 6, 8, 10, 13, 18. Cytokeratins are a member of intermediate filaments subfamily represented in epithelial tissues.
Host	Mouse
Clonality	Monoclonal
Clone	C-11
Isotype	IgG1
Target Name	Cytokeratin (pan)
Species	Human
Immunogen	Keratin-enriched preparation from human epidermoid carcinoma cell line A431.
Conjugation	Allophycocyanin
Alternate Names	67 kDa cytokeratin; KRT1A; EPPK; Keratin, type II cytoskeletal 1; EHK1; K1; Keratin-1; CK1; Cytokeratin-1; Hair alpha protein; Type-II keratin Kb1; CK-1; NEPPK; EHK

Application Instructions

Application table	Application	Dilution
	FACS	1 µg/ml

Application Note * The dilutions indicate recommended starting dilutions and the optimal dilutions or concentrations should be determined by the scientist.

Properties

Form	Liquid
Purification Note	The purified antibody is conjugated with cross-linked Allophycocyanin (APC) under optimum conditions. The conjugate is purified by size-exclusion chromatography.
Buffer	PBS, 15 mM Sodium azide and 0.2% (w/v) high-grade protease free BSA
Preservative	15 mM Sodium azide
Stabilizer	0.2% (w/v) high-grade protease free BSA
Concentration	0.1 mg/ml
Storage instruction	Aliquot and store in the dark at 2-8°C. Keep protected from prolonged exposure to light. Avoid repeated freeze/thaw cycles. Suggest spin the vial prior to opening. The antibody solution should be gently mixed before use.

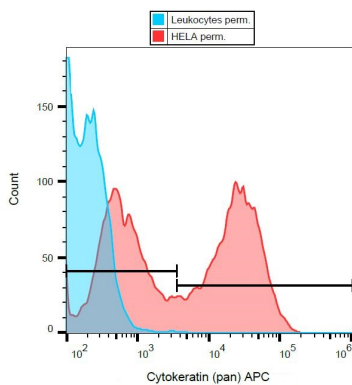
Note

For laboratory research only, not for drug, diagnostic or other use.

Bioinformation

Gene Symbol	KRT1
Gene Full Name	keratin 1, type II
Background	Cytokeratins are a subfamily of intermediate filaments and characterized by remarkable biochemical diversity. Cytokeratins are represented in epithelial tissues by at least 20 different polypeptides, molecular weight between 40 kDa and 68 kDa. The individual cytokeratin polypeptides are designated 1 to 20 and divided into the type I (acidic cytokeratins 9-20) and type II (basic to neutral cytokeratins 1-8) families.
Function	May regulate the activity of kinases such as PKC and SRC via binding to integrin beta-1 (ITB1) and the receptor of activated protein kinase C (RACK1/GNB2L1). In complex with C1QBP is a high affinity receptor for kininogen-1/HMWK. [UniProt]
Research Area	Signaling Transduction antibody; Carcinoma Marker antibody
Calculated Mw	66 kDa
PTM	Undergoes deimination of some arginine residues (citrullination).

Images



ARG53924 anti-Cytokeratin (pan) antibody [C-11] (APC) FACS image

Flow Cytometry: HeLa cells (red) and Leukocytes (blue, negative control) stained with ARG53924 anti-Cytokeratin (pan) antibody [C-11] (APC).