

## ARG53953 Mouse anti-Human Kappa Light Chain antibody [A8B5] (PE)

Package: 100 tests  
Store at: 4°C

### Summary

Product Description	PE-conjugated Mouse Monoclonal antibody [A8B5] recognizes Human Kappa Light Chain
Tested Reactivity	Hu
Species Does Not React With	Goat, Gpig, Hm, Rb, Sheep
Tested Application	FACS
Specificity	The clone A8B5 reacts with kappa light chains (22.5 kDa) of immunoglobulins.
Host	Mouse
Clonality	Monoclonal
Clone	A8B5
Isotype	IgG1
Target Name	Kappa Light Chain
Conjugation	PE

### Application Instructions

Application table	Application	Dilution
	FACS	20 µl / 10 <sup>6</sup> cells
Application Note	* The dilutions indicate recommended starting dilutions and the optimal dilutions or concentrations should be determined by the scientist.	

### Properties

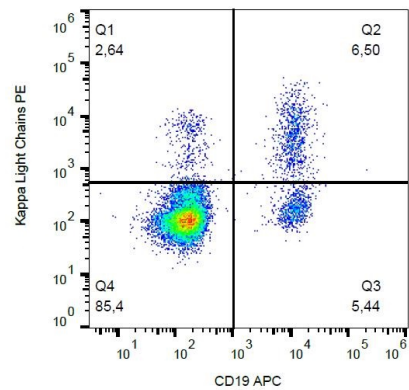
Form	Liquid
Purification Note	The purified antibody is conjugated with R-Phycoerythrin (PE) under optimum conditions. The conjugate is purified by size-exclusion chromatography and adjusted for direct use. No reconstitution is necessary.
Buffer	PBS, 15 mM Sodium azide and 0.2% (w/v) high-grade protease free BSA
Preservative	15 mM Sodium azide
Stabilizer	0.2% (w/v) high-grade protease free BSA
Storage instruction	Aliquot and store in the dark at 2-8°C. Keep protected from prolonged exposure to light. Avoid repeated freeze/thaw cycles. Suggest spin the vial prior to opening. The antibody solution should be gently mixed before use.
Note	For laboratory research only, not for drug, diagnostic or other use.

### Bioinformation

Database links	<a href="#">GeneID: 3514 Human</a>
Background	Immunoglobulin classes share the same basic four polypeptide chain structure of two heavy chains (five heavy chains types) and two light chains (kappa, lambda; both having a molecular weight of 22.5kDa). Kappa and lambda consist of a variable region and a constant region and can easily be differentiated by the antigenic properties of the constant region. The ratio of kappa to lambda is 70:30.
Research Area	Immune System antibody

Images

---



ARG53953 Mouse anti-Human Kappa Light Chain antibody [A8B5] (PE) FACS image

Flow Cytometry: Human peripheral blood stained with ARG53953 Mouse anti-Human Kappa Light Chain antibody [A8B5] (PE) and anti-CD19 antibody (APC).