

ARG54000 anti-KLF4 antibody

Package: 100 µl
Store at: -20°C

Summary

Product Description	Mouse Monoclonal antibody recognizes KLF4
Tested Reactivity	Ms
Tested Application	WB
Host	Mouse
Clonality	Monoclonal
Isotype	IgG2b
Target Name	KLF4
Species	Mouse
Immunogen	Purified recombinant mouse KLF4 protein fragments expressed in E.coli.
Conjugation	Un-conjugated
Alternate Names	GKLF; EZF; Epithelial zinc finger protein EZF; Krueppel-like factor 4; Gut-enriched krueppel-like factor

Application Instructions

Application table	Application	Dilution
	WB	1:1000
Application Note	* The dilutions indicate recommended starting dilutions and the optimal dilutions or concentrations should be determined by the scientist.	
Observed Size	55/65 kDa	

Properties

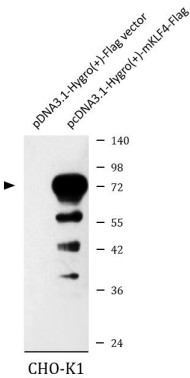
Form	Liquid
Buffer	Ascites
Storage instruction	For continuous use, store undiluted antibody at 2-8°C for up to a week. For long-term storage, aliquot and store at -20°C or below. Storage in frost free freezers is not recommended. Avoid repeated freeze/thaw cycles. Suggest spin the vial prior to opening. The antibody solution should be gently mixed before use.
Note	For laboratory research only, not for drug, diagnostic or other use.

Bioinformation

Database links	GeneID: 16600 Mouse Swiss-port # Q60793 Mouse
----------------	--

Gene Symbol	Klf4
Gene Full Name	Kruppel-like factor 4 (gut)
Background	Transcription factor; can act both as activator and as repressor.Binds the 5'-CACCC-3' core sequence.Binds to the promoter region of its own gene and can activate its own transcription.Regulates the expression of key transcription factors during embryonic development.Plays an important role in maintaining embryonic stem cells,and in preventing their differentiation.Required for establishing the barrier function of the skin and for postnatal maturation and maintenance of the ocular surface.Involved in the differentiation of epithelial cells and may also function in skeletal and kidney development.Contributes to the down-regulation of p53/TP53 transcription.
Function	Transcription factor; can act both as activator and as repressor. Binds the 5'-CACCC-3' core sequence. Binds to the promoter region of its own gene and can activate its own transcription. Regulates the expression of key transcription factors during embryonic development. Plays an important role in maintaining embryonic stem cells, and in preventing their differentiation. Required for establishing the barrier function of the skin and for postnatal maturation and maintenance of the ocular surface. Involved in the differentiation of epithelial cells and may also function in skeletal and kidney development. Contributes to the down-regulation of p53/TP53 transcription (By similarity). [UniProt]
Research Area	Cancer antibody; Cell Biology and Cellular Response antibody; Developmental Biology antibody; Gene Regulation antibody
Calculated Mw	55 kDa
Cellular Localization	Nucleus.

Images



ARG54000 anti-KLF4 antibody WB image

Western blot: CHO-K1 cells transfected with pDNA3.1-Hygro(+)-Flag vector (left) or pcDNA3.1-Hygro(+)-mKLF4-Flag (right). The blots were stained with ARG54000 anti-KLF4 antibody at 1:1000 dilution.