

ARG54101 anti-CKMT2 antibody

Package: 100 µl
Store at: -20°C

Summary

Product Description	Mouse Monoclonal antibody recognizes CKMT2
Tested Reactivity	Rat
Tested Application	WB
Host	Mouse
Clonality	Monoclonal
Isotype	IgG2b
Target Name	CKMT2
Species	Human
Immunogen	Purified recombinant human CKMT2 protein fragments expressed in E.coli.
Conjugation	Un-conjugated
Alternate Names	EC 2.7.3.2; S-MtCK; Basic-type mitochondrial creatine kinase; Creatine kinase S-type, mitochondrial; Mib-CK; Sarcomeric mitochondrial creatine kinase; SMTCK

Application Instructions

Application table	Application	Dilution
	WB	1:1000
Application Note	* The dilutions indicate recommended starting dilutions and the optimal dilutions or concentrations should be determined by the scientist.	
Observed Size	47 kDa	

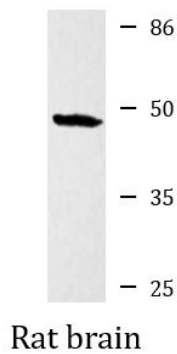
Properties

Form	Liquid
Purification	Affinity purified
Buffer	0.1M Tris-Glycine (pH 7.4), 150 mM NaCl, 0.2% Sodium azide and 50% Glycerol
Preservative	0.2% Sodium azide
Stabilizer	50% Glycerol
Concentration	1 mg/ml
Storage instruction	For continuous use, store undiluted antibody at 2-8°C for up to a week. For long-term storage, aliquot and store at -20°C. Storage in frost free freezers is not recommended. Avoid repeated freeze/thaw cycles. Suggest spin the vial prior to opening. The antibody solution should be gently mixed before use.
Note	For laboratory research only, not for drug, diagnostic or other use.

Bioinformation

Gene Symbol	CKMT2
Gene Full Name	creatine kinase, mitochondrial 2 (sarcomeric)
Background	Reversibly catalyzes the transfer of phosphate between ATP and various phosphogens (e.g. creatine phosphate). Creatine kinase isoenzymes play a central role in energy transduction in tissues with large, fluctuating energy demands, such as skeletal muscle, heart, brain and spermatozoa.
Function	Reversibly catalyzes the transfer of phosphate between ATP and various phosphogens (e.g. creatine phosphate). Creatine kinase isoenzymes play a central role in energy transduction in tissues with large, fluctuating energy demands, such as skeletal muscle, heart, brain and spermatozoa. [UniProt]
Research Area	Controls and Markers antibody; Metabolism antibody; Signaling Transduction antibody
Calculated Mw	48 kDa
Cellular Localization	Mitochondrion inner membrane; Peripheral membrane protein; Intermembrane side.

Images



ARG54101 anti-CKMT2 antibody WB image

Western blot: Rat brain lysate stained with ARG54101 anti-CKMT2 antibody at 1:1000 dilution.