

## ARG54136 anti-CD31 antibody

Package: 100 µl  
Store at: -20°C

### Summary

Product Description	Mouse Monoclonal antibody recognizes CD31
Tested Reactivity	Hu
Tested Application	IP, WB
Host	Mouse
Clonality	Monoclonal
Isotype	IgG1
Target Name	CD31
Species	Human
Immunogen	Purified recombinant human CD31 protein fragments expressed in E.coli.
Conjugation	Un-conjugated
Alternate Names	EndoCAM; CD31/EndoCAM; PECAM-1; CD31; PECA1; CD antigen CD31; GPIIA'; endoCAM; Platelet endothelial cell adhesion molecule

### Application Instructions

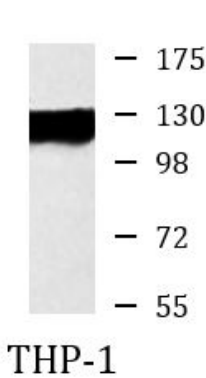
Application table	Application	Dilution
	IP	Assay-dependent
	WB	1:1000
Application Note	* The dilutions indicate recommended starting dilutions and the optimal dilutions or concentrations should be determined by the scientist.	
Observed Size	130 kDa	

### Properties

Form	Liquid
Purification	Affinity purified
Buffer	PBS (pH 7.4), 0.02% Sodium azide, 0.1mg/ml BSA and 50% Glycerol
Preservative	0.02% Sodium azide
Stabilizer	0.1mg/ml BSA, 50% Glycerol
Concentration	1 mg/ml
Storage instruction	For continuous use, store undiluted antibody at 2-8°C for up to a week. For long-term storage, aliquot and store at -20°C. Storage in frost free freezers is not recommended. Avoid repeated freeze/thaw cycles. Suggest spin the vial prior to opening. The antibody solution should be gently mixed before use.
Note	For laboratory research only, not for drug, diagnostic or other use.

Database links	<a href="#">GeneID: 5175 Human</a> <a href="#">Swiss-port # P16284 Human</a>
Gene Symbol	PECAM1
Gene Full Name	platelet/endothelial cell adhesion molecule 1
Background	CD31 protein is found on the surface of platelets, monocytes, neutrophils, and some types of T-cells, and makes up a large portion of endothelial cell intercellular junctions. The encoded protein is a member of the immunoglobulin superfamily and is likely involved in leukocyte migration, angiogenesis, and integrin activation. [provided by RefSeq, May 2010]
Function	<p>CD31 is a cell adhesion molecule which is required for leukocyte transendothelial migration (TEM) under most inflammatory conditions (PubMed:19342684, PubMed:17580308). Tyr-690 plays a critical role in TEM and is required for efficient trafficking of PECAM1 to and from the lateral border recycling compartment (LBRC) and is also essential for the LBRC membrane to be targeted around migrating leukocytes (PubMed:19342684). Trans-homophilic interaction may play a role in endothelial cell-cell adhesion via cell junctions (PubMed:27958302). Heterophilic interaction with CD177 plays a role in transendothelial migration of neutrophils (PubMed:17580308). Homophilic ligation of PECAM1 prevents macrophage-mediated phagocytosis of neighboring viable leukocytes by transmitting a detachment signal (PubMed:12110892). Promotes macrophage-mediated phagocytosis of apoptotic leukocytes by tethering them to the phagocytic cells; PECAM1-mediated detachment signal appears to be disabled in apoptotic leukocytes (PubMed:12110892). Modulates bradykinin receptor BDKRB2 activation (PubMed:18672896). Regulates bradykinin- and hyperosmotic shock-induced ERK1/2 activation in endothelial cells (PubMed:18672896). Induces susceptibility to atherosclerosis.</p> <p>Isoform Delta15: Does not protect against apoptosis. [UniProt]</p>
Research Area	Cancer antibody; Cell Biology and Cellular Response antibody; Controls and Markers antibody; Developmental Biology antibody; Signaling Transduction antibody; Endothelial Cell Marker antibody; Microvascular Density Study antibody
Calculated Mw	83 kDa
PTM	Phosphorylated on Ser and Tyr residues after cellular activation. Phosphorylated on tyrosine residues by FER and FES in response to FCER1 activation (By similarity). In endothelial cells Fyn mediates mechanical-force (stretch or pull) induced tyrosine phosphorylation. Palmitoylation by ZDHHC21 is necessary for cell surface expression in endothelial cells and enrichment in membrane rafts.
Cellular Localization	Isoform Long: Membrane; Single-pass type I membrane protein. Cell junction. Isoform Delta15: Cell junction.

Images



ARG54136 anti-CD31 antibody WB image

Western blot: THP-1 cell lysate stained with ARG54136 anti-CD31 antibody at 1:1000 dilution.

#### ARG54136 anti-CD31 antibody IP image

Immunoprecipitation: THP-1 cell lysates were immunoprecipitated and stained with ARG54136 anti-CD31 antibody.

