

ARG54173 anti-Hsp 60 antibody

Package: 100 µl, 50 µl
Store at: -20°C

Summary

Product Description	Mouse Monoclonal antibody recognizes Hsp 60
Tested Reactivity	Hu, Ms, Rat
Tested Application	ICC/IF, IP, WB
Host	Mouse
Clonality	Monoclonal
Isotype	IgG2b
Target Name	Hsp 60
Species	Human
Immunogen	Purified recombinant human Hsp60 protein fragments expressed in E.coli.
Conjugation	Un-conjugated
Alternate Names	Heat shock protein 60; HuCHA60; 60 kDa heat shock protein, mitochondrial; GROEL; P60 lymphocyte protein; 60 kDa chaperonin; HSP-60; Mitochondrial matrix protein P1; HLD4; SPG13; HSP60; Chaperonin 60; Hsp60; CPN60; HSP65

Application Instructions

Application table	Application	Dilution
	ICC/IF	1:100
	IP	1:100
	WB	1:1000

Application Note * The dilutions indicate recommended starting dilutions and the optimal dilutions or concentrations should be determined by the scientist.

Properties

Form	Liquid
Purification	Affinity purified
Buffer	PBS (pH 7.4), 0.02% Sodium azide and 50% Glycerol
Preservative	0.02% Sodium azide
Stabilizer	50% Glycerol
Concentration	2.6 mg/ml
Storage instruction	For continuous use, store undiluted antibody at 2-8°C for up to a week. For long-term storage, aliquot and store at -20°C. Storage in frost free freezers is not recommended. Avoid repeated freeze/thaw cycles. Suggest spin the vial prior to opening. The antibody solution should be gently mixed before use.

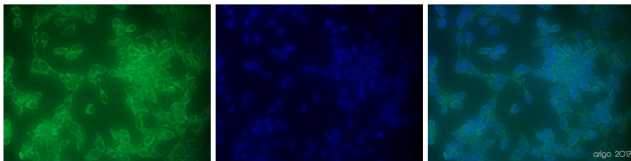
Note

For laboratory research only, not for drug, diagnostic or other use.

Bioinformation

Gene Symbol	HSPD1
Gene Full Name	heat shock 60kDa protein 1 (chaperonin)
Background	Implicated in mitochondrial protein import and macromolecular assembly. May facilitate the correct folding of imported proteins. May also prevent misfolding and promote the refolding and proper assembly of unfolded polypeptides generated under stress conditions in the mitochondrial matrix.
Function	Implicated in mitochondrial protein import and macromolecular assembly. May facilitate the correct folding of imported proteins. May also prevent misfolding and promote the refolding and proper assembly of unfolded polypeptides generated under stress conditions in the mitochondrial matrix. [UniProt]
Highlight	Related Antibody Duos and Panels: ARG30271 Mitochondrial Marker Antibody Panel (Cytochrome C, COX4, HSP60) Related products: Hsp60 antibodies ; Hsp60 Duos / Panels ; Anti-Mouse IgG secondary antibodies ; Related poster download: The Structure & Functions of Mitochondria.pdf
Research Area	Controls and Markers antibody; Signaling Transduction antibody; Mitochondrial Marker antibody
Calculated Mw	61 kDa
Cellular Localization	Mitochondrion matrix.

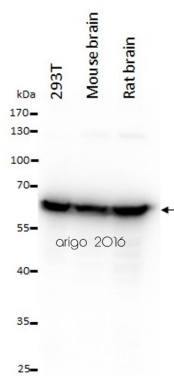
Images



ARG54173 anti-Hsp 60 antibody ICC/IF image

Immunofluorescence: 100% Methanol fixed (RT, 10 min) HeLa cells stained with ARG54173 anti-Hsp 60 antibody at 1:100 dilution. Left: primary antibody (green). Middle: DAPI (blue). Right: Merge.

Secondary antibody: ARG55393 Goat anti-Mouse IgG (H+L) antibody (FITC)

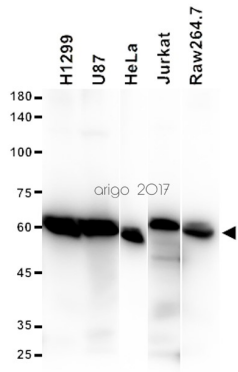


ARG54173 anti-Hsp 60 antibody WB image

Western blot: 20 µg of 293T, Mouse brain and Rat brain lysates stained with ARG54173 anti-Hsp 60 antibody at 1:1000 dilution.

ARG54173 anti-Hsp 60 antibody WB image

Western blot: 15 µg of H1299, U87, HeLa, Jurkat and Raw264.7 cell lysates stained with ARG54173 anti-Hsp 60 antibody.



ARG54173 anti-Hsp 60 antibody IP image

Immunoprecipitation: HeLa cell lysates were immunoprecipitated and stained with ARG54173 anti-Hsp 60 antibody.

