

## ARG54250 anti-CD107a / LAMP1 antibody [H4A3] (APC)

Package: 50 tests

Store at: 4°C

### Summary

Product Description	APC-conjugated Mouse Monoclonal antibody [H4A3] recognizes CD107a / LAMP1
Tested Reactivity	Hu, Ms, NHuPrm
Tested Application	FACS
Specificity	The mouse monoclonal antibody H4A3 recognizes LAMP1 / CD107a, an approximately 100120 kDa glycoprotein expressed mainly on lysosomal, but also on the plasma membrane.
Host	Mouse
Clonality	Monoclonal
Clone	H4A3
Isotype	IgG1
Target Name	CD107a / LAMP1
Species	Human
Immunogen	Human PBMC
Conjugation	APC
Alternate Names	LGP120; CD107a; LAMPA; CD antigen CD107a; Lysosome-associated membrane glycoprotein 1; CD107 antigen-like family member A; LAMP-1; Lysosome-associated membrane protein 1

### Application Instructions

Application table	Application	Dilution
	FACS	10 µl / 10 <sup>6</sup> cells

**Application Note** \* The dilutions indicate recommended starting dilutions and the optimal dilutions or concentrations should be determined by the scientist.

### Properties

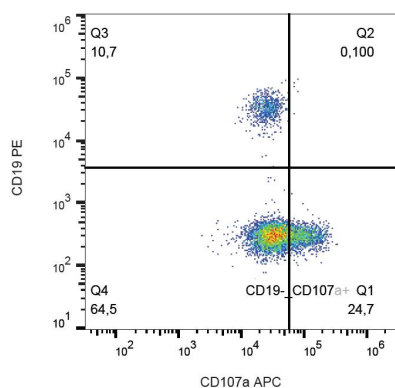
Form	Liquid
Purification Note	The purified antibody is conjugated with cross-linked Allophycocyanin (APC) under optimum conditions. The conjugate is purified by size-exclusion chromatography and adjusted for direct use. No reconstitution is necessary.
Buffer	PBS, 0.02% Sodium azide and 0.2% (w/v) high-grade protease free BSA
Preservative	0.02% Sodium azide
Stabilizer	0.2% (w/v) high-grade protease free BSA
Storage instruction	Aliquot and store in the dark at 2-8°C. Keep protected from prolonged exposure to light. Avoid repeated freeze/thaw cycles. Suggest spin the vial prior to opening. The antibody solution should be gently mixed before use.

Note For laboratory research only, not for drug, diagnostic or other use.

## Bioinformation

Database links	<a href="#">GeneID: 16783 Mouse</a> <a href="#">GeneID: 3916 Human</a> <a href="#">Swiss-port # P11279 Human</a> <a href="#">Swiss-port # P11438 Mouse</a>
Gene Symbol	LAMP1
Gene Full Name	lysosomal-associated membrane protein 1
Background	CD107a (lysosome-associated membrane protein-1, LAMP-1), together with LAMP-2, is a major constituent of lysosomal membrane, 1-2% of total CD107a is found also on the plasma membrane. The LAMP proteins are involved in lysosome biogenesis and are required for fusion of lysosomes with phagosomes. Increased CD107a immunoreactivity is observed in neurones, and in glial cells surrounding senile plaques in Alzheimers disease cases and is localized mainly in medullary epithelial cells, single macrophages and lymphocytes in acute thymic involution. CD107a is a good marker of mast cell activation.
Function	Presents carbohydrate ligands to selectins. Also implicated in tumor cell metastasis. [UniProt]
Research Area	Cancer antibody; Cell Death antibody; Controls and Markers antibody; Developmental Biology antibody; Metabolism antibody; Neuroscience antibody; Signaling Transduction antibody; Lysosome Marker antibody
Calculated Mw	45 kDa
PTM	O- and N-glycosylated; some of the 18 N-linked glycans are polylactosaminoglycans. The glycosylation of N-76 is essential for Lassa virus entry into cells.

## Images



ARG54250 anti-CD107a / LAMP1 antibody [H4A3] (APC) FACS image

Flow Cytometry: Human peripheral blood cells stained with ARG54250 anti-CD107a / LAMP1 antibody [H4A3] (APC) and anti-CD19 antibody (PE).