

**ARG54253**  
anti-CD107b / LAMP2 antibody [H4B4] (PE)Package: 50 tests  
Store at: 4°C

### Summary

Product Description	PE-conjugated Mouse Monoclonal antibody [H4B4] recognizes CD107b / LAMP2
Tested Reactivity	Hu, AGMK, R. Mk
Tested Application	EM, FACS, ICC/IF, IHC-Fr, IHC-P, Puri, WB
Host	Mouse
Clonality	Monoclonal
Clone	H4B4
Isotype	IgG1, kappa
Target Name	CD107b / LAMP2
Species	Human
Immunogen	Human adherent peripheral blood cells
Conjugation	PE
Alternate Names	CD antigen CD107b; LAMPB; CD107b; LGP110; Lysosome-associated membrane glycoprotein 2; LAMP-2; CD107 antigen-like family member B; Lysosome-associated membrane protein 2

### Application Instructions

Application table	Application	Dilution
	EM	Assay-dependent
	FACS	10 µl/10 <sup>6</sup> cells
	ICC/IF	Assay-dependent
	IHC-Fr	Assay-dependent
	IHC-P	Assay-dependent
	Puri	Assay-dependent
	WB	Assay-dependent

**Application Note** \* The dilutions indicate recommended starting dilutions and the optimal dilutions or concentrations should be determined by the scientist.

### Properties

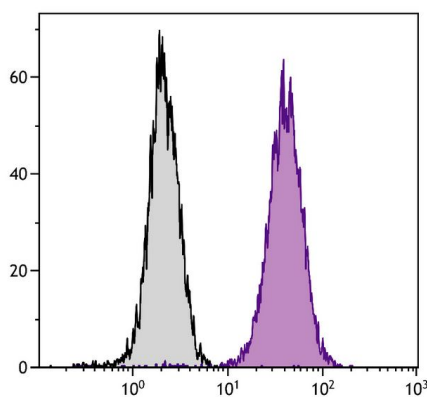
Form	Liquid
Buffer	PBS, 0.1% Sodium azide and Sucrose.
Preservative	0.1% Sodium azide
Stabilizer	Sucrose

Storage instruction	Aliquot and store in the dark at 2-8°C. Keep protected from prolonged exposure to light. Avoid repeated freeze/thaw cycles. Suggest spin the vial prior to opening. The antibody solution should be gently mixed before use.
Note	For laboratory research only, not for drug, diagnostic or other use.

## Bioinformation

Database links	<a href="#">GeneID: 3920 Human</a> <a href="#">Swiss-port # P13473 Human</a>
Gene Symbol	LAMP2
Gene Full Name	lysosomal-associated membrane protein 2
Background	CD107b (lysosome-associated membrane protein-2, LAMP-2), together with CD107a / LAMP-1, is a major constituent of lysosomal membrane. The LAMP proteins are involved in lysosome biogenesis and are required for fusion of lysosomes with phagosomes, especially CD107b is important regulator in successful phagosomal maturation. CD107b deficiency causes an accumulation of autophagosomes in many tissues leading to cardiomyopathy and myopathy (Danons disease). Immature CD107b is an approximately 45 kDa protein, but after extensive glycosylation the mature glycoprotein has about 100-120 kDa.
Function	Implicated in tumor cell metastasis. May function in protection of the lysosomal membrane from autodigestion, maintenance of the acidic environment of the lysosome, adhesion when expressed on the cell surface (plasma membrane), and inter- and intracellular signal transduction. Protects cells from the toxic effects of methylating mutagens. [UniProt]
Research Area	Cell Biology and Cellular Response antibody; Cell Death antibody; Controls and Markers antibody; Developmental Biology antibody; Immune System antibody; Metabolism antibody; Signaling Transduction antibody
Calculated Mw	45 kDa
PTM	O- and N-glycosylated; some of the 16 N-linked glycans are polylactosaminoglycans.

## Images



ARG54253 anti-CD107b / LAMP2 antibody [H4B4] (PE) FACS image

Flow Cytometry: Jurkat cells stained with ARG54253 anti-CD107b / LAMP2 antibody [H4B4] (PE).