

ARG54260 anti-CD11b antibody [ICRF44] (PE)

Package: 50 tests

Store at: 4°C

Summary

Product Description	PE-conjugated Mouse Monoclonal antibody [ICRF44] recognizes CD11b
Tested Reactivity	Hu, Bb, Chimp, Pig, R. Mk
Tested Application	BL, FACS, ICC/IF, IHC-Fr, WB
Host	Mouse
Clonality	Monoclonal
Clone	ICRF44
Isotype	IgG1, kappa
Target Name	CD11b
Species	Human
Immunogen	Rheumatoid synovial cells and human monocytes
Conjugation	PE
Alternate Names	MAC1A; CR3A; CR-3 alpha chain; Cell surface glycoprotein MAC-1 subunit alpha; Integrin alpha-M; MAC-1; CD11 antigen-like family member B; Leukocyte adhesion receptor MO1; MO1A; SLEB6; Neutrophil adherence receptor; CD antigen CD11b; CD11B

Application Instructions

Application table	Application	Dilution
	BL	Assay-dependent
	FACS	10 µl/10 ⁶ cells
	ICC/IF	Assay-dependent
	IHC-Fr	Assay-dependent
	WB	Assay-dependent

Application Note * The dilutions indicate recommended starting dilutions and the optimal dilutions or concentrations should be determined by the scientist.

Properties

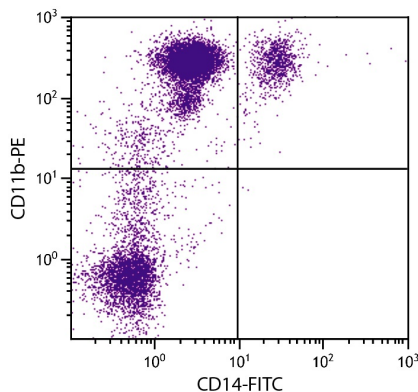
Form	Liquid
Buffer	PBS, 0.1% Sodium azide and Sucrose.
Preservative	0.1% Sodium azide
Stabilizer	Sucrose
Storage instruction	Aliquot and store in the dark at 2-8°C. Keep protected from prolonged exposure to light. Avoid repeated freeze/thaw cycles. Suggest spin the vial prior to opening. The antibody solution should be gently mixed before use.

Note For laboratory research only, not for drug, diagnostic or other use.

Bioinformation

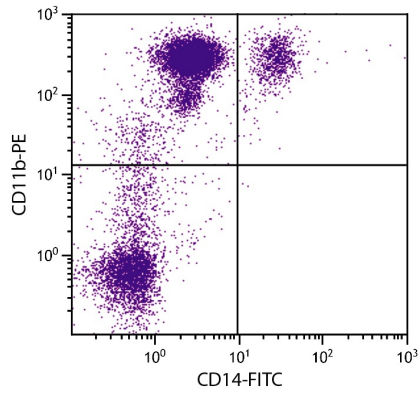
Database links	GeneID: 3684 Human Swiss-port # P11215 Human
Gene Symbol	ITGAM
Gene Full Name	integrin, alpha M (complement component 3 receptor 3 subunit)
Background	CD11b (integrin alpha M chain): Integrins are heterodimeric integral membrane proteins composed of an alpha chain and a beta chain. This I-domain containing alpha integrin combines with the beta 2 chain (ITGB2) to form a leukocyte-specific integrin referred to as macrophage receptor 1 ('Mac-1'), or inactivated-C3b (iC3b) receptor 3 ('CR3'). The alpha M beta 2 integrin is important in the adherence of neutrophils and monocytes to stimulated endothelium, and also in the phagocytosis of complement coated particles. Multiple transcript variants encoding different isoforms have been found for this gene. [provided by RefSeq, Mar 2009]
Function	CD11b: Integrin ITGAM/ITGB2 is implicated in various adhesive interactions of monocytes, macrophages and granulocytes as well as in mediating the uptake of complement-coated particles and pathogens (PubMed:9558116, PubMed:20008295). It is identical with CR-3, the receptor for the iC3b fragment of the third complement component. It probably recognizes the R-G-D peptide in C3b. Integrin ITGAM/ITGB2 is also a receptor for fibrinogen, factor X and ICAM1. It recognizes P1 and P2 peptides of fibrinogen gamma chain. Regulates neutrophil migration (PubMed:28807980). In association with beta subunit ITGB2/CD18, required for CD177-PRTN3-mediated activation of TNF primed neutrophils (PubMed:21193407). May regulate phagocytosis-induced apoptosis in extravasated neutrophils. May play a role in mast cell development. Required with TYROBP/DAP12 in microglia to control production of microglial superoxide ions which promote the neuronal apoptosis that occurs during brain development. [UniProt]
Highlight	Related products: CD11b antibodies ; CD11b Duos / Panels ; Anti-Mouse IgG secondary antibodies ; Related news: New antibody panels and duos for Tumor immune microenvironment Anti-SerpinB9 therapy, a new strategy for cancer therapy
Research Area	MDSC Marker antibody; Myeloid-derived suppressor cell antibody
Calculated Mw	127 kDa

Images



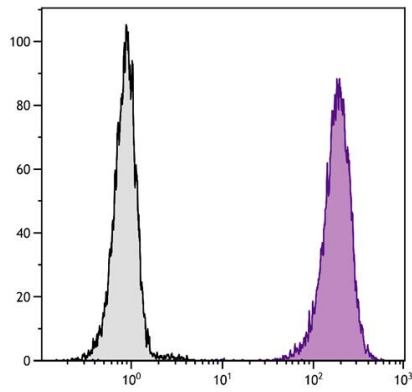
ARG54260 anti-CD11b antibody [ICRF44] (PE) FACS image

Flow Cytometry: Human peripheral blood lymphocytes stained with ARG54260 anti-CD11b antibody [ICRF44] (PE) and ARG21335 anti-CD14 antibody [61D3] (FITC).



ARG54260 anti-CD11b antibody [ICRF44] (PE) FACS image

Flow Cytometry: Human peripheral blood lymphocytes stained with ARG54260 anti-CD11b antibody [ICRF44] (PE) and ARG21335 anti-CD14 antibody [61D3] (FITC).



ARG54260 anti-CD11b antibody [ICRF44] (PE) FACS image

Flow Cytometry: Human peripheral blood granulocytes stained with ARG54260 anti-CD11b antibody [ICRF44] (PE).