

## ARG54382 anti-F1A alpha antibody

Package: 50 µg  
Store at: -20°C

### Summary

Product Description	Rabbit Polyclonal antibody recognizes F1A alpha
Tested Reactivity	Hu, Ms, Rat
Tested Application	IHC-P, WB
Specificity	This antibody recognizes human, mouse, and rat F1A (70kDa).
Host	Rabbit
Clonality	Polyclonal
Isotype	IgG
Target Name	F1A alpha
Species	Human
Immunogen	Peptide corresponding to aa 609-622 of human F1A (accession no. AAF05314). This sequence is identical to that of mouse.
Conjugation	Un-conjugated
Alternate Names	Fem-1-like death receptor-binding protein alpha; F1A-alpha; Protein fem-1 homolog B; F1A-ALPHA; Fem-1-like in apoptotic pathway protein alpha; FEM1-beta; FEM1b; F1AA

### Application Instructions

Application table	Application	Dilution
	IHC-P	5-20 µg/mL
	WB	1-2 µg/mL
Application Note	* The dilutions indicate recommended starting dilutions and the optimal dilutions or concentrations should be determined by the scientist.	
Positive Control	Mouse and Rat liver	

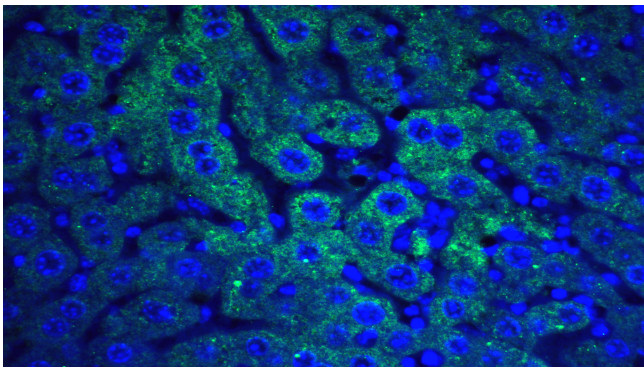
### Properties

Form	Liquid
Purification	Immunoaffinity chroma-tography
Buffer	PBS (pH 7.4) and 0.02% Sodium azide
Preservative	0.02% Sodium azide
Storage instruction	For continuous use, store undiluted antibody at 2-8°C for up to a week. For long-term storage, aliquot and store at -20°C or below. Storage in frost free freezers is not recommended. Avoid repeated freeze/thaw cycles. Suggest spin the vial prior to opening. The antibody solution should be gently mixed before use.
Note	For laboratory research only, not for drug, diagnostic or other use.

Bioinformation

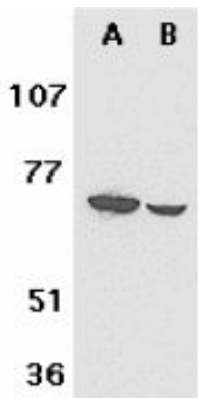
Gene Symbol	FEM1B
Gene Full Name	fem-1 homolog b (C. elegans)
Background	Fas and tumor necrosis factor receptor 1 (TNFR1) are two members of the family of death receptors. A novel protein that associates with the intracellular domains of Fas and TNFR1 has been designated F1A (or FEM1 ). F1A is cleaved by CED-3 and caspase, and it associates with CED-4 and its mammalian homologue Apaf-1. Overexpression of F1A induces apoptosis. F1A is expressed in a variety of human and mouse tissues.
Function	Component of an E3 ubiquitin-protein ligase complex, in which it may act as a substrate recognition subunit. Involved in apoptosis by acting as a death receptor-associated protein that mediates apoptosis. Also involved in glucose homeostasis in pancreatic islet. Functions as an adapter/mediator in replication stress-induced signaling that leads to the activation of CHEK1. [UniProt]
Research Area	Cell Biology and Cellular Response antibody; Cell Death antibody
Calculated Mw	70 kDa

Images



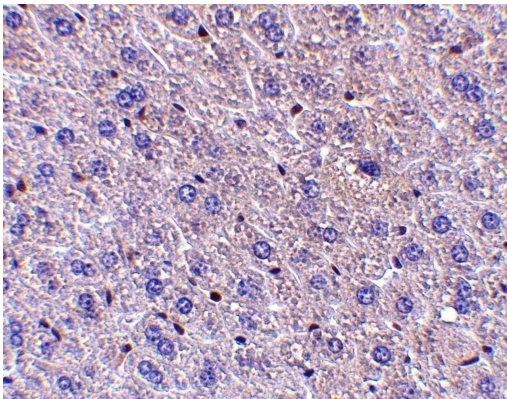
ARG54382 anti-F1A alpha antibody IHC-P image

Immunohistochemistry: mouse liver stained with ARG54382 anti-F1A alpha antibody at 20 µg/ml dilution.



ARG54382 anti-F1A alpha antibody WB image

Western Blot: A:mouse liver ; B: rat liver stained with ARG54382 anti-F1A alpha antibody at 1 µg/ml dilution.



ARG54382 anti-F1A alpha antibody IHC-P image

Immunohistochemistry: mouse liver stained with ARG54382 anti-F1A alpha antibody at 5 µg/ml dilution.