

ARG54404 anti-APAF1 antibody

Package: 50 µg
Store at: -20°C

Summary

Product Description	Rabbit Polyclonal antibody recognizes APAF1
Tested Reactivity	Hu
Tested Application	IHC-P, WB
Specificity	This antibody recognizes full-length mouse and human Apaf1 (115-130kDa).
Host	Rabbit
Clonality	Polyclonal
Isotype	IgG
Target Name	APAF1
Species	Human
Immunogen	Peptide corresponding to aa 12-28 of human Apaf1. This sequence is identical in human and mouse.
Conjugation	Un-conjugated
Alternate Names	CED4; APAF-1; Apoptotic protease-activating factor 1

Application Instructions

Application table	Application	Dilution
	IHC-P	Assay-dependent
	WB	Assay-dependent
Application Note	* The dilutions indicate recommended starting dilutions and the optimal dilutions or concentrations should be determined by the scientist.	
Positive Control	HeLa and K562	

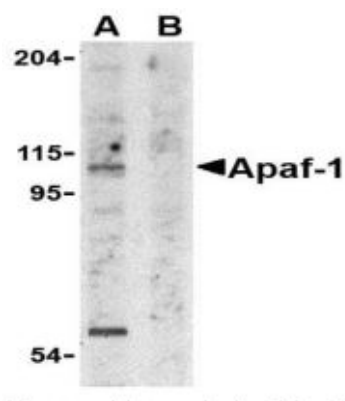
Properties

Form	Liquid
Purification	Immunoaffinity chroma-tography
Buffer	PBS (pH 7.4) and 0.02% Sodium azide
Preservative	0.02% Sodium azide
Storage instruction	For continuous use, store undiluted antibody at 2-8°C for up to a week. For long-term storage, aliquot and store at -20°C or below. Storage in frost free freezers is not recommended. Avoid repeated freeze/thaw cycles. Suggest spin the vial prior to opening. The antibody solution should be gently mixed before use.
Note	For laboratory research only, not for drug, diagnostic or other use.

Bioinformation

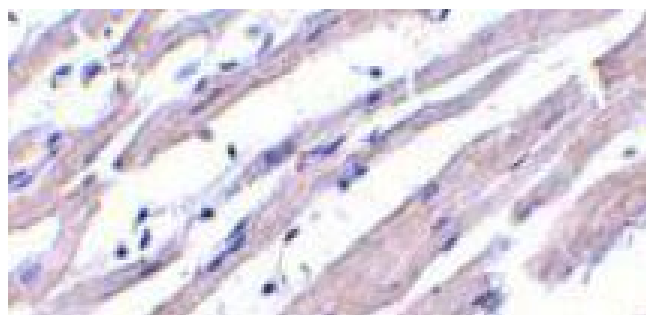
Database links	GeneID: 317 Human Swiss-port # O14727 Human
Gene Symbol	APAF1
Gene Full Name	apoptotic peptidase activating factor 1
Background	The mammalian homologues of the key cell death gene CED-4 in <i>C. elegans</i> has been identified recently from human and mouse and designated Apaf1 (for apoptosis protease-activating factor 1). Apaf1 binds to cytochrome c (Apaf2) and caspase-9 (Apaf3), which leads to caspase-9 activation. Activated caspase-9 in turn cleaves and activates caspase-3, one of the key proteases responsible for the proteolytic cleavage of many key proteins in apoptosis. Apaf1 can also associate with caspase-4 and caspase-8. Apaf1 is ubiquitously expressed in human tissues.
Function	Oligomeric Apaf-1 mediates the cytochrome c-dependent autocatalytic activation of pro-caspase-9 (Apaf-3), leading to the activation of caspase-3 and apoptosis. This activation requires ATP. Isoform 6 is less effective in inducing apoptosis. [UniProt]
Research Area	Cancer antibody; Cell Biology and Cellular Response antibody; Cell Death antibody; Metabolism antibody
Calculated Mw	142 kDa

Images



ARG54404 anti-APAF1 antibody WB image

Western blot: K562 cell lysate in the (A) absence and (B) presence of blocking peptide. stained with ARG54404 anti-APAF1 antibody at 1 µg/ml dilution.



ARG54404 anti-APAF1 antibody IHC image

Immunohistochemistry: Human heart tissue stained with ARG54404 anti-APAF1 antibody at 1 µg/ml dilution.