

ARG54440 anti-PUMA antibody

Package: 50 µg, 25 µg
Store at: -20°C

Summary

Product Description	Rabbit Polyclonal antibody recognizes PUMA
Tested Reactivity	Hu
Tested Application	ICC/IF, IHC-P, WB
Specificity	This antibody recognizes human and mouse PUMA (23kDa).
Host	Rabbit
Clonality	Polyclonal
Isotype	IgG
Target Name	PUMA
Species	Human
Immunogen	Synthetic peptide corresponding to aa 2-16 of human PUMA-alpha (accession no. NP_055232). This sequence is identical in mouse PUMA.
Conjugation	Un-conjugated
Alternate Names	PUMA; p53 up-regulated modulator of apoptosis; JFY-1; JFY1; Bcl-2-binding component 3

Application Instructions

Application table	Application	Dilution
	ICC/IF	Assay-dependent
	IHC-P	Assay-dependent
	WB	Assay-dependent
Application Note	* The dilutions indicate recommended starting dilutions and the optimal dilutions or concentrations should be determined by the scientist.	
Positive Control	K562 and Human breast carcinoma	

Properties

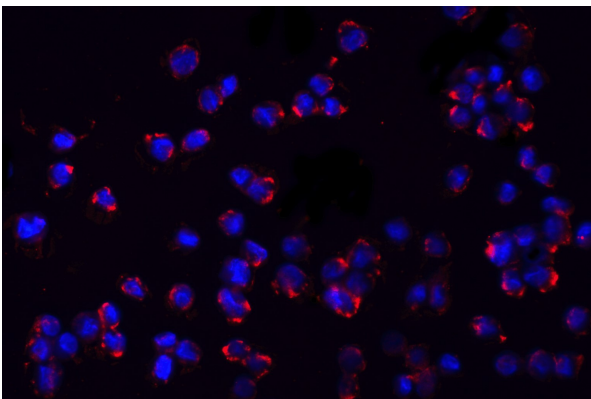
Form	Liquid
Purification	Immunoaffinity chroma-tography
Buffer	PBS (pH 7.4) and 0.02% Sodium azide
Preservative	0.02% Sodium azide
Storage instruction	For continuous use, store undiluted antibody at 2-8°C for up to a week. For long-term storage, aliquot and store at -20°C or below. Storage in frost free freezers is not recommended. Avoid repeated freeze/thaw cycles. Suggest spin the vial prior to opening. The antibody solution should be gently mixed before use.

Note For laboratory research only, not for drug, diagnostic or other use.

Bioinformation

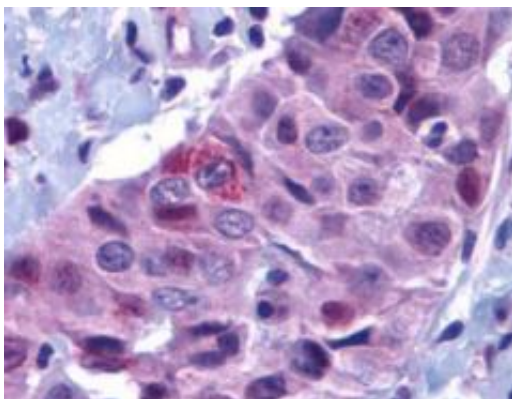
Database links	GeneID: 27113 Human Swiss-port # Q96PG8 Human
Gene Symbol	BBC3
Gene Full Name	BCL2 binding component 3
Background	PUMA (p53 Upregulated Modulator of Apoptosis) is a pro-apoptotic Bcl-2 family member that encodes two BH3 domain-containing proteins, PUMA- and PUMA-. PUMA proteins bind Bcl-2, localize to mitochondria, and induce cytochrome c release and apoptosis in response to p53.
Function	Essential mediator of p53/TP53-dependent and p53/TP53-independent apoptosis. Isoform 3 fails to show any growth-inhibitory or apoptotic activity. [UniProt]
Research Area	Cancer antibody; Cell Biology and Cellular Response antibody; Cell Death antibody; Metabolism antibody; Signaling Transduction antibody
Calculated Mw	26 kDa

Images



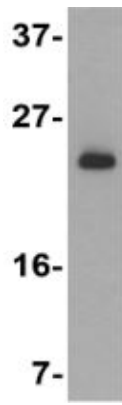
ARG54440 anti-PUMA antibody ICC/IF image

Immunofluorescence: K562 cells stained with ARG54440 anti-PUMA antibody at 20 µg/ml dilution.



ARG54440 anti-PUMA antibody IHC-P image

Immunohistochemistry: Human breast carcinoma stained with ARG54440 anti-PUMA antibody at 10 µg/ml dilution.



ARG54440 anti-PUMA antibody WB image

Western Blot: K562 stained with ARG54440 anti-PUMA antibody at 2 $\mu\text{g/ml}$ dilution.