

ARG54452 anti-Cytochrome P450 2E1 antibody

Package: 100 µg
Store at: -20°C

Summary

Product Description	Rabbit Polyclonal antibody recognizes Cytochrome P450 2E1
Tested Reactivity	Hu, Ms, Rat, Dog, Gpig, Hrs, Mk, Rb
Tested Application	WB
Specificity	This antibody recognizes human, mouse, rat, rabbit, canine, guinea pig, horse and monkey cytochrome P450 2E1.
Host	Rabbit
Clonality	Polyclonal
Isotype	IgG
Target Name	Cytochrome P450 2E1
Species	Rat
Immunogen	Native Rat cytochrome P450 2E1
Conjugation	Un-conjugated
Alternate Names	EC 1.14.13.n7; Cytochrome P450 2E1; Cytochrome P450-J; EC 1.14.13.-; P450C2E; CYP1I1; CYP2E; 4-nitrophenol 2-hydroxylase; P450-J; CPE1

Application Instructions

Application table	Application	Dilution
	WB	Assay-dependent
Application Note	* The dilutions indicate recommended starting dilutions and the optimal dilutions or concentrations should be determined by the scientist.	
Positive Control	Human, Mouse and Rat liver microsome extract	

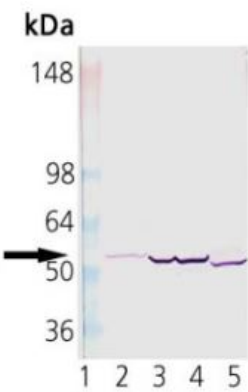
Properties

Form	Liquid
Purification	Protein A-purified
Buffer	PBS, 0.09% Sodium azide and 50% Glycerol
Preservative	0.09% Sodium azide
Stabilizer	50% Glycerol
Storage instruction	For continuous use, store undiluted antibody at 2-8°C for up to a week. For long-term storage, aliquot and store at -20°C. Storage in frost free freezers is not recommended. Avoid repeated freeze/thaw cycles. Suggest spin the vial prior to opening. The antibody solution should be gently mixed before use.
Note	For laboratory research only, not for drug, diagnostic or other use.

Bioinformation

Gene Symbol	Cyp2e1
Gene Full Name	cytochrome P450, family 2, subfamily e, polypeptide 1
Background	Cytochrome P450 is a highly conserved, diverse family of heme-containing proteins that function in the metabolism of numerous endogenous and exogenous substrates: organic solvents, acetaminophen, dimethylnitrosamine, aliphatic alcohols, and other potentially toxic compounds for humans.Cytochrome P450 is found mainly in liver but also is found in other organs. It is primarily localized to the inner membranes of mitochondria and the endoplasmic reticulum. Eukaryotic microsomal cytochrome P450 enzymes accept electrons from the FAD- and FMN-containing enzyme NADPH:cytochrome P450 reductase.
Function	Metabolizes several precarcinogens, drugs, and solvents to reactive metabolites. [UniProt]
Research Area	Cell Biology and Cellular Response antibody; Metabolism antibody; Signaling Transduction antibody
Calculated Mw	57 kDa

Images



ARG54452 anti-Cytochrome P450 2E1 antibody WB image

Western blot: 2) Human liver microsomes, 3) Rat liver microsomes, 4) Mouse liver microsomes, and 5) Rabbit liver microsomes stained with ARG54452 anti-Cytochrome P450 2E1 antibody at 2 µg/ml dilution.