

ARG54459 anti-BRD2 antibody

Package: 50 µg
Store at: -20°C

Summary

| | |
|---------------------|---|
| Product Description | Goat Polyclonal antibody recognizes BRD2 |
| Tested Reactivity | Hu |
| Tested Application | WB |
| Specificity | This antibody reacts with human BRD2. The specific epitope is in the region between aa 550 and 600 of human BRD2. Based on 100% sequence identity, this antibody is predicted to react with Bovine, Rhesus Monkey, Gorilla, White-tufted-ear marmoset, Crab-eating macaque and Northern white-cheeked gibbon. |
| Host | Goat |
| Clonality | Polyclonal |
| Isotype | IgG |
| Target Name | BRD2 |
| Species | Human |
| Immunogen | Synthetic peptide representing a portion of the protein between the putative nuclear localization signal and the ET domain |
| Conjugation | Un-conjugated |
| Alternate Names | O27.1.1; FSH; RING3; D6S113E; FSRG1; Really interesting new gene 3 protein; NAT; Bromodomain-containing protein 2; RNF3 |

Application Instructions

| Predict Reactivity Note | Bovine, Rhesus Monkey, Gorilla, White-tufted-ear marmoset, Crab-eating macaque and Northern white-cheeked gibbon. | | | | |
|-------------------------|--|-------------|----------|----|-----------------|
| Application table | <table><thead><tr><th>Application</th><th>Dilution</th></tr></thead><tbody><tr><td>WB</td><td>Assay-dependent</td></tr></tbody></table> | Application | Dilution | WB | Assay-dependent |
| Application | Dilution | | | | |
| WB | Assay-dependent | | | | |
| Application Note | * The dilutions indicate recommended starting dilutions and the optimal dilutions or concentrations should be determined by the scientist. | | | | |
| Positive Control | HeLa | | | | |

Properties

| | |
|---------------------|---|
| Form | Liquid |
| Purification | Affinity-purified with an epitope specific to BRD2 immobilized on solid support. |
| Buffer | Tris-citrate/phosphate (pH 7-8) and 0.09% Sodium azide |
| Preservative | 0.09% Sodium azide |
| Storage instruction | For continuous use, store undiluted antibody at 2-8°C for up to a week. For long-term storage, aliquot and store at -20°C or below. Storage in frost free freezers is not recommended. Avoid repeated |

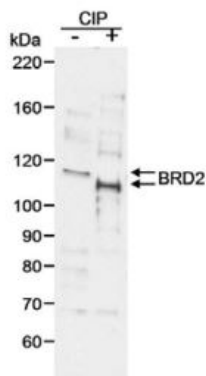
freeze/thaw cycles. Suggest spin the vial prior to opening. The antibody solution should be gently mixed before use.

Note For laboratory research only, not for drug, diagnostic or other use.

Bioinformation

| | |
|----------------|--|
| Database links | GeneID: 6046 Human Swiss-port # P25440 Human |
| Gene Symbol | BRD2 |
| Gene Full Name | bromodomain containing 2 |
| Background | BRD2 (bromodomain-containing 2) is a nuclear mitogen-activated kinase that plays a role in transcription of cell-cycle-regulated genes by functioning as an adapter protein that recruits E2F and chromatin remodeling factors to E2F response elements. |
| Function | May play a role in spermatogenesis or folliculogenesis (By similarity). Binds hyperacetylated chromatin and plays a role in the regulation of transcription, probably by chromatin remodeling. Regulates transcription of the CCND1 gene. Plays a role in nucleosome assembly. [UniProt] |
| Research Area | Cell Biology and Cellular Response antibody; Gene Regulation antibody; Signaling Transduction antibody |
| Calculated Mw | 88 kDa |

Images



ARG54459 anti-BRD2 antibody WB image

Western Blot: 10ug of HeLa cells untreated (-) or treated (+) with calf intestinal phosphatase stained with ARG54459 anti-BRD2 antibody at 0.05ug/ml dilution.