

ARG54647
anti-IL22 antibodyPackage: 50 µg
Store at: -20°C

Summary

Product Description	Rabbit Polyclonal antibody recognizes IL22
Tested Reactivity	Hu, Ms, Rat
Tested Application	ELISA, ICC/IF, WB
Host	Rabbit
Clonality	Polyclonal
Isotype	IgG
Target Name	IL22
Species	Human
Immunogen	Synthetic peptide (17 aa) within aa. 90-140 of Human IL-22 protein.
Conjugation	Un-conjugated
Alternate Names	Interleukin-22; zcyto18; IL-TIF; IL-22; IL-21; IL-D110; TIFa; ILTIF; TIFIL-23; IL-10-related T-cell-derived-inducible factor; Cytokine Zcyto18

Application Instructions

Application table	Application	Dilution
	ELISA	Assay-dependent
	ICC/IF	5 - 20 µg/ml
	WB	1 - 2 µg/ml
Application Note	* The dilutions indicate recommended starting dilutions and the optimal dilutions or concentrations should be determined by the scientist.	
Positive Control	HeLa Cell Lysate	

Properties

Form	Liquid
Purification	Immunogen affinity purified
Buffer	PBS and 0.02% Sodium azide.
Preservative	0.02% Sodium azide
Concentration	1 mg/ml
Storage instruction	For continuous use, store undiluted antibody at 2-8°C for up to a week. For long-term storage, aliquot and store at -20°C or below. Storage in frost free freezers is not recommended. Avoid repeated freeze/thaw cycles. Suggest spin the vial prior to opening. The antibody solution should be gently mixed before use.

Note

For laboratory research only, not for drug, diagnostic or other use.

Bioinformation

Database links

[GeneID: 50616 Human](#)

[GeneID: 50929 Mouse](#)

[Swiss-port # Q9GZX6 Human](#)

[Swiss-port # Q9JJY9 Mouse](#)

Gene Symbol

IL22

Gene Full Name

interleukin 22

Background

Interleukin-22 (IL-22) is a cytokine important for the modulation of tissue responses during inflammation (1). Unlike the distantly related IL-10, IL-22 does not inhibit the production of proinflammatory cytokines in monocytes in response to LPS, but it has some inhibitory effects on IL-4 production from Th2 T cells. IL-22 is expressed by both the adaptive arm of the immune system such as CD4 T cell subsets including Th17 cells, as well as by innate lymphocytes such as NK and LTI-like cells (2). IL-22 is highly expressed in several chronic inflammatory conditions, and studies suggest that IL-22 plays both inflammatory and protective roles (3).

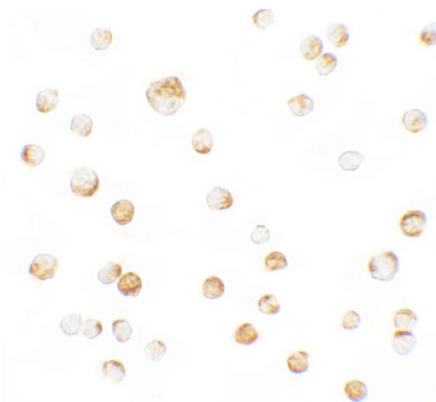
Research Area

Immune System antibody; Signaling Transduction antibody

Calculated Mw

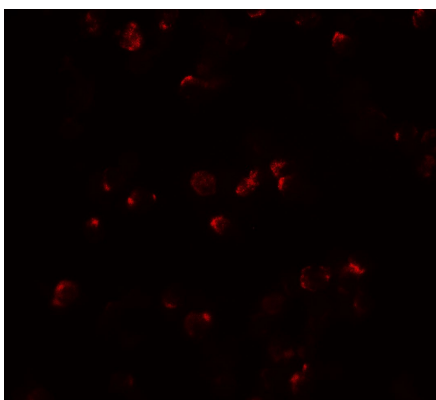
20 kDa

Images



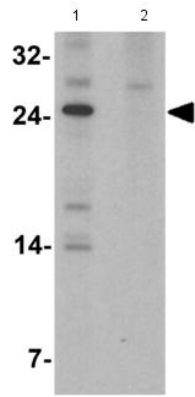
ARG54647 anti-IL22 antibody ICC/IF image

Immunocytochemistry: IL-22 in HeLa cells stained with ARG54647 anti-IL22 antibody at 5 µg/ml.



ARG54647 anti-IL22 antibody ICC/IF image

Immunofluorescence: IL-22 in HeLa cells stained with ARG54647 anti-IL22 antibody at 20 µg/mL.



ARG54647 anti-IL22 antibody WB image

Western blot: (A) IL-22 in HeLa cell lysate without blocking peptide
(B) IL-22 in HeLa cell lysate with blocking peptide stained with
ARG54647 anti-IL22 antibody at 1 $\mu\text{g/ml}$.