

## ARG54650 anti-IKK alpha antibody

Package: 50 µg, 25 µg  
Store at: -20°C

### Summary

Product Description	Rabbit Polyclonal antibody recognizes IKK alpha
Tested Reactivity	Hu
Tested Application	ELISA, ICC/IF, WB
Specificity	Antibody has no cross response to IKKb or IKKg.
Host	Rabbit
Clonality	Polyclonal
Isotype	IgG
Target Name	IKK alpha
Immunogen	Synthetic peptide (19 aa) within the last 50 aa of Human IKK alpha.
Conjugation	Un-conjugated
Alternate Names	Conserved helix-loop-helix ubiquitous kinase; IKK-A; TCF16; IKK1; Inhibitor of nuclear factor kappa-B kinase subunit alpha; I-kappa-B kinase 1; IkappaB kinase; Transcription factor 16; EC 2.7.11.10; Nuclear factor NF-kappa-B inhibitor kinase alpha; IkbKA; IKK-alpha; NFKBKA; IKKA; TCF-16; I-kappa-B kinase alpha

### Application Instructions

Application table	Application	Dilution
	ELISA	Assay-Dependent
	ICC/IF	ICC: 1 µg/mL. IF: 20 µg/mL
	WB	1 µg/mL
Application Note	* The dilutions indicate recommended starting dilutions and the optimal dilutions or concentrations should be determined by the scientist.	
Positive Control	HeLa Cell Lysate	

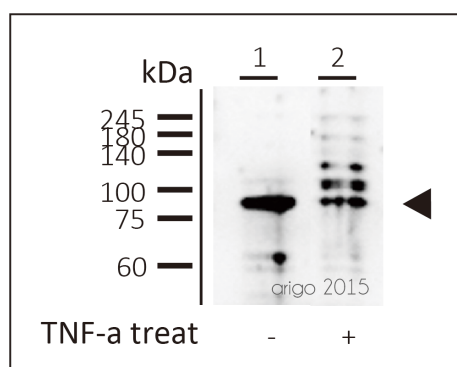
### Properties

Form	Liquid
Purification	Affinity purification with immunogen.
Buffer	PBS and 0.02% Sodium azide
Preservative	0.02% Sodium azide
Storage instruction	For continuous use, store undiluted antibody at 2-8°C for up to a week. For long-term storage, aliquot and store at -20°C or below. Storage in frost free freezers is not recommended. Avoid repeated freeze/thaw cycles. Suggest spin the vial prior to opening. The antibody solution should be gently mixed before use.

## Bioinformation

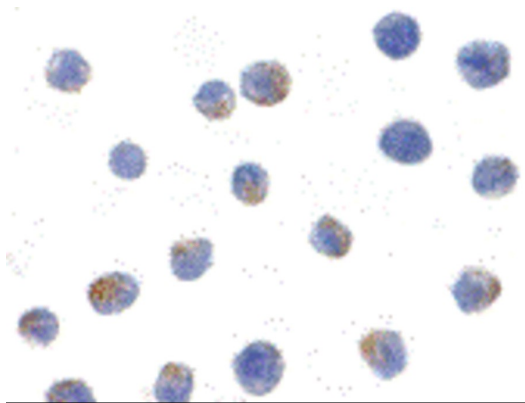
Database links	<a href="#">GeneID: 1147 Human</a> <a href="#">Swiss-port # O15111 Human</a>
Gene Symbol	CHUK
Gene Full Name	conserved helix-loop-helix ubiquitous kinase
Background	<p>IKK alpha Antibody: Nuclear factor kappa B (NF-<math>\kappa</math>B) is a ubiquitous transcription factor and an essential mediator of gene expression during activation of immune and inflammatory responses. NF-<math>\kappa</math>B mediates the expression of a great variety of genes in response to extracellular stimuli including IL-1, TNF<math>\alpha</math>, and bacteria product LPS. NF-<math>\kappa</math>B is associated with I<math>\kappa</math>B proteins in the cell cytoplasm, which inhibit NF-<math>\kappa</math>B activity. The long-sought I<math>\kappa</math>B kinase (IKK), which phosphorylates I<math>\kappa</math>B, and mediates I<math>\kappa</math>B degradation and NF-<math>\kappa</math>B activation, was recently identified by several laboratories. IKK is a serine protein kinase, and the IKK complex contains alpha and beta subunits (IKK<math>\alpha</math> and IKK<math>\beta</math>). IKK<math>\alpha</math> and IKK<math>\beta</math> interact with each other and both are essential for the NF-<math>\kappa</math>B activation. IKK<math>\alpha</math> specifically phosphorylates I<math>\kappa</math>B-alpha. IKK<math>\alpha</math> is expressed in variety of human tissues.  </p>
Highlight	<p>Related Antibody Duos and Panels:  <a href="#">ARG30255 IKB alpha degradation Antibody Panel (IKK alpha, IKK beta, IKB alpha)</a>            Related products:  <a href="#">IKK alpha antibodies</a>; <a href="#">IKK alpha Duos / Panels</a>; <a href="#">Anti-Rabbit IgG secondary antibodies</a>;            Related poster download:  <a href="#">Toll-like Receptor.pdf</a></p>
Research Area	Cell Biology and Cellular Response antibody; Gene Regulation antibody; Immune System antibody; Signaling Transduction antibody; I $\kappa$ B alpha degradation Study antibody
Calculated Mw	85 kDa
PTM	<p>Phosphorylated by MAP3K14/NIK, AKT and to a lesser extent by MEKK1, and dephosphorylated by PP2A. Autophosphorylated.</p> <p>(Microbial infection) Acetylation of Thr-179 by Yersinia yopJ prevents phosphorylation and activation, thus blocking the I-kappa-B signaling pathway.</p>

## Images



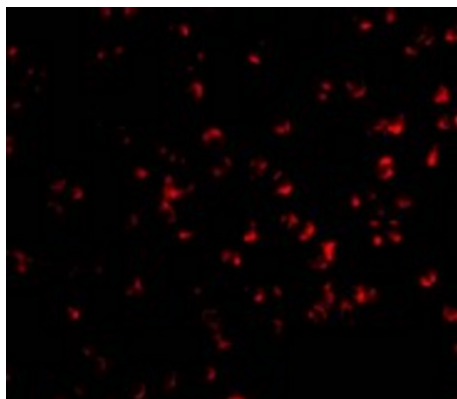
ARG54650 anti-IKK alpha antibody WB image

Western blot: 30  $\mu$ g of HeLa cell lysates 1) untreated or 2) treated with 5 ng/ml TNF-a for 5 min, stained with ARG54650 anti-IKK alpha antibody at 1:500 dilution.



ARG54650 anti-IKK alpha antibody ICC/IF image

Immunocytochemistry: Jurkat cells stained with ARG54650 anti-IKK alpha antibody at 1µg/ml.



ARG54650 anti-IKK alpha antibody ICC/IF image

Immunofluorescence: Jurkat cells stained with ARG54650 anti-IKK alpha antibody at 10 µg/ml.