

ARG54666
anti-STOX2 antibodyPackage: 50 µg
Store at: -20°C

Summary

Product Description	Rabbit Polyclonal antibody recognizes STOX2
Tested Reactivity	Hu, Ms, Rat
Tested Application	ELISA, ICC/IF, IHC-P, WB
Host	Rabbit
Clonality	Polyclonal
Isotype	IgG
Target Name	STOX2
Immunogen	Synthetic peptide (19 aa) within the last 50 aa of Human STOX2 protein.
Conjugation	Un-conjugated
Alternate Names	Storkhead-box protein 2

Application Instructions

Application table	Application	Dilution
	ELISA	Assay-Dependent
	ICC/IF	20 µg/mL
	IHC-P	Assay-Dependent
	WB	1 µg/mL
Application Note	* The dilutions indicate recommended starting dilutions and the optimal dilutions or concentrations should be determined by the scientist.	
Positive Control	Human Kidney Tissue Lysate	

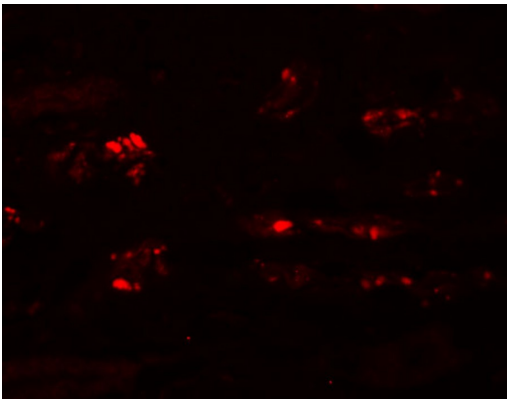
Properties

Form	Liquid
Purification	Affinity purification with immunogen.
Buffer	PBS and 0.02% Sodium azide
Preservative	0.02% Sodium azide
Concentration	1 mg/ml
Storage instruction	For continuous use, store undiluted antibody at 2-8°C for up to a week. For long-term storage, aliquot and store at -20°C or below. Storage in frost free freezers is not recommended. Avoid repeated freeze/thaw cycles. Suggest spin the vial prior to opening. The antibody solution should be gently mixed before use.
Note	For laboratory research only, not for drug, diagnostic or other use.

Bioinformation

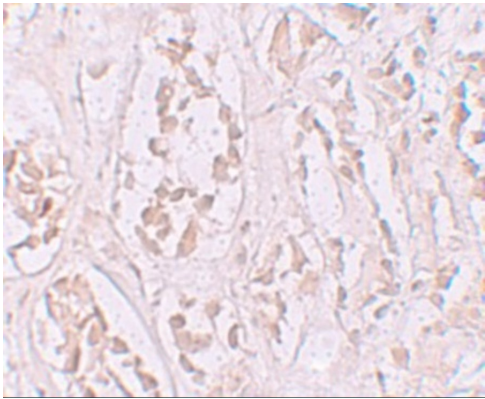
Gene Symbol	STOX2
Gene Full Name	storkhead box 2
Background	STOX2 Antibody: The Storkhead box protein 2 (STOX2) is the only known paralog to STOX1, a winged-helix domain containing transcription factor believed to play a role in the differentiation of stem cells. STOX2 has been suggested to be part of a molecular profile unique to stem cells, and its mRNA may be part of a transcriptional profile observed with increased inflammatory response to air pollutants. Decreased STOX2 expression levels in decidua are also correlated with preeclampsia, suggesting STOX2 may play a role in the pathophysiology of preeclampsia.
Research Area	Developmental Biology antibody
Calculated Mw	103 kDa

Images



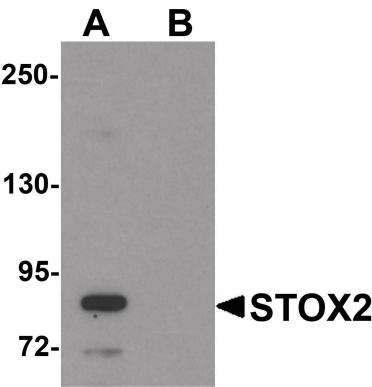
ARG54666 anti-STOX2 antibody ICC/IF image

Immunofluorescence: human kidney tissue stained with ARG54666 anti-STOX2 antibody at 20 µg/ml.



ARG54666 anti-STOX2 antibody IHC image

Immunohistochemistry: human kidney tissue stained with ARG54666 anti-STOX2 antibody at 2.5 µg/ml.



ARG54666 anti-STOX2 antibody WB image

Western blot: human kidney tissue lysate stained with ARG54666 anti-STOX2 antibody at 1 µg/ml in (A) the absence and (B) the presence of blocking peptide.