

## ARG54673 anti-B Raf antibody

Package: 50 µg  
Store at: -20°C

### Summary

Product Description	Rabbit Polyclonal antibody recognizes B Raf
Tested Reactivity	Hu, Ms, Rat
Tested Application	ELISA, ICC/IF, IHC-P, WB
Specificity	At least two isoforms of B-raf are known to exist; this antibody will detect both isoforms. This antibody will not cross-react with C-raf.
Host	Rabbit
Clonality	Polyclonal
Isotype	IgG
Target Name	B Raf
Immunogen	Synthetic peptide (19 aa) within aa. 330-380 Human B-raf protein.
Conjugation	Un-conjugated
Alternate Names	BRAF1; v-Raf murine sarcoma viral oncogene homolog B1; Proto-oncogene B-Raf; p94; Serine/threonine-protein kinase B-raf; RAFB1; EC 2.7.11.1; B-RAF1; NS7

### Application Instructions

Application table	Application	Dilution
	ELISA	Assay-Dependent
	ICC/IF	Assay-Dependent
	IHC-P	Assay-Dependent
	WB	1 - 2 µg/mL
Application Note	* The dilutions indicate recommended starting dilutions and the optimal dilutions or concentrations should be determined by the scientist.	
Positive Control	Human Brain Tissue Lysate	
Observed Size	99 kDa. Multiple post-translational modifications, commonly observed at 95-100 kDa.	

### Properties

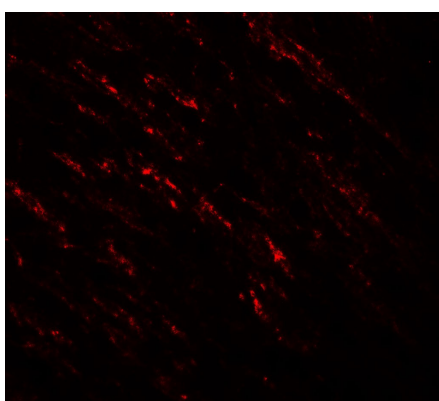
Form	Liquid
Purification	Affinity purification with immunogen.
Buffer	PBS and 0.02% Sodium azide
Preservative	0.02% Sodium azide
Concentration	1 mg/ml

Storage instruction	For continuous use, store undiluted antibody at 2-8°C for up to a week. For long-term storage, aliquot and store at -20°C or below. Storage in frost free freezers is not recommended. Avoid repeated freeze/thaw cycles. Suggest spin the vial prior to opening. The antibody solution should be gently mixed before use.
Note	For laboratory research only, not for drug, diagnostic or other use.

## Bioinformation

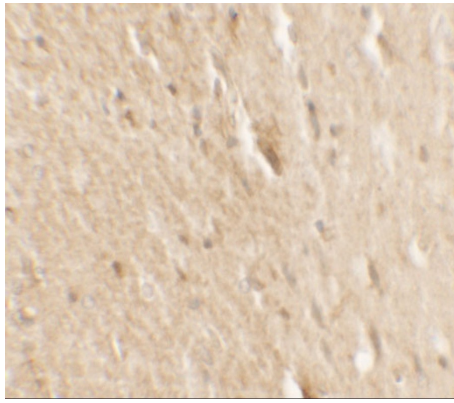
Database links	<a href="#">GeneID: 109880 Mouse</a> <a href="#">GeneID: 673 Human</a> <a href="#">Swiss-port # P15056 Human</a> <a href="#">Swiss-port # P28028 Mouse</a>
Gene Symbol	BRAF
Gene Full Name	B-Raf proto-oncogene, serine/threonine kinase
Background	B-raf Antibody: B-raf belongs to the raf/mil family of serine/threonine protein kinases and plays a role in regulating the MAP kinase/ERKs signaling pathway, which affects cell division, differentiation, and secretion. The Ras/Raf/MEK/ERK and Ras/PI3K/PTEN/Akt pathways interact with each other to regulate growth and in some cases tumorigenesis. Mutations in B-raf have been associated with several cancers, including non-Hodgkin lymphoma, colorectal cancer, malignant melanoma, thyroid carcinoma, non-small cell lung carcinoma, and adenocarcinoma of lung, leading to speculation on the possibility of B-raf as a therapeutic target for treating cancers. Mutations in this gene have also been associated with cardiofaciocutaneous syndrome (CFCS), a disease characterized by heart defects, mental retardation and a distinctive facial appearance.
Research Area	Cancer antibody; Cell Biology and Cellular Response antibody; Cell Death antibody; Signaling Transduction antibody
Calculated Mw	84 kDa
PTM	Phosphorylation at Ser-365 by SGK1 inhibits its activity. Methylation at Arg-671 decreases stability and kinase activity. Ubiquitinated by RNF149; which leads to proteasomal degradation. Polyubiquitinated at Lys-578 in response to EGF.

## Images



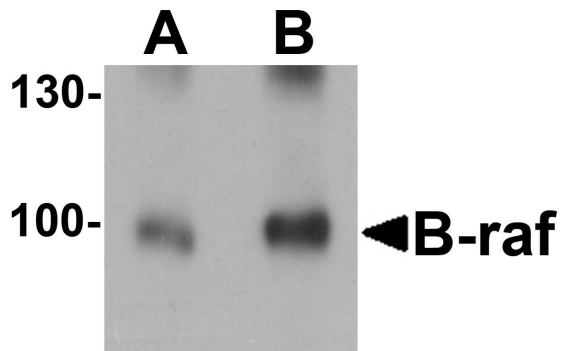
ARG54673 anti-B Raf antibody ICC/IF image

Immunofluorescence: Human small intestine tissue stained with ARG54673 anti-B Raf antibody at 20 µg/ml.



ARG54673 anti-B Raf antibody IHC image

Immunohistochemistry: Human small intestine tissue stained with ARG54673 anti-B Raf antibody at 2.5 µg/ml.



ARG54673 anti-B Raf antibody WB image

Western blot: Human brain tissue lysate stained with ARG54673 anti-B Raf antibody at (A) 1 and (B) 2 µg/ml.