

## ARG54688 anti-Cyclin A2 antibody

Package: 100 µl  
Store at: -20°C

### Summary

|                     |   |
|---------------------|---|
| Product Description | Rabbit Polyclonal antibody recognizes Cyclin A2   |
| Tested Reactivity   | Hu  |
| Tested Application  | FACS, WB  |
| Host                | Rabbit  |
| Clonality           | Polyclonal  |
| Isotype             | IgG   |
| Target Name         | Cyclin A2   |
| Species             | Human   |
| Immunogen           | Recombinant protein of Human CCNA2 (NP_001228.1). |
| Conjugation         | Un-conjugated                                     |
| Alternate Names     | Cyclin-A2; Cyclin-A; CCN1; CCNA                   |

### Application Instructions

| Application table | Application  | Dilution       |
|-------------------|--|----------------|
|                   | FACS   | 1:10 - 1:50    |
|                   | WB   | 1:500 - 1:2000 |
| Application Note  | * The dilutions indicate recommended starting dilutions and the optimal dilutions or concentrations should be determined by the scientist. |                |

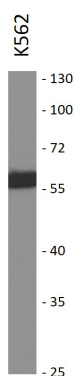
### Properties

|                     |   |
|---------------------|---|
| Form                | Liquid  |
| Purification        | Affinity purification with immunogen.   |
| Buffer              | PBS (pH 7.3), 0.02% Sodium azide and 50% Glycerol   |
| Preservative        | 0.02% Sodium azide  |
| Stabilizer          | 50% Glycerol  |
| Storage instruction | For continuous use, store undiluted antibody at 2-8°C for up to a week. For long-term storage, aliquot and store at -20°C. Storage in frost free freezers is not recommended. Avoid repeated freeze/thaw cycles. Suggest spin the vial prior to opening. The antibody solution should be gently mixed before use. |
| Note                | For laboratory research only, not for drug, diagnostic or other use.  |

### Bioinformation

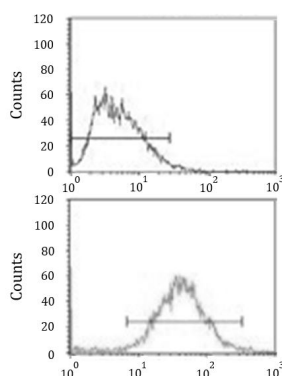
|                |  |
|----------------|--|
| Database links | <a href="#">GeneID: 890 Human</a><br><a href="#">Swiss-port # P20248 Human</a>   |
| Gene Symbol    | CCNA2  |
| Gene Full Name | cyclin A2  |
| Background     | The protein encoded by this gene belongs to the highly conserved cyclin family, whose members are characterized by a dramatic periodicity in protein abundance through the cell cycle. Cyclins function as regulators of CDK kinases. Different cyclins exhibit distinct expression and degradation patterns which contribute to the temporal coordination of each mitotic event. In contrast to cyclin A1, which is present only in germ cells, this cyclin is expressed in all tissues tested. This cyclin binds and activates CDC2 or CDK2 kinases, and thus promotes both cell cycle G1/S and G2/M transitions. [provided by RefSeq, Jul 2008] |
| Function       | Essential for the control of the cell cycle at the G1/S (start) and the G2/M (mitosis) transitions. [UniProt]  |
| Research Area  | Cancer antibody; Cell Biology and Cellular Response antibody; Gene Regulation antibody   |
| Calculated Mw  | 49 kDa   |
| PTM            | Polyubiquitinated via 'Lys-11'-linked ubiquitin by the anaphase-promoting complex (APC/C), leading to its degradation by the proteasome. Deubiquitinated and stabilized by USP37 enables entry into S phase.   |

## Images



ARG54688 anti-Cyclin A2 antibody WB image

Western blot: K562 cell lysate stained with ARG54688 anti-Cyclin A2 antibody.



ARG54688 anti-Cyclin A2 antibody FACS image

Flow Cytometry: HepG2 cells stained with ARG54688 anti-Cyclin A2 antibody (bottom histogram) or without primary antibody as control (top histogram), followed by incubation with FITC labelled secondary antibody.