

ARG54705 anti-ACAT1 antibody

Package: 100 µl
Store at: -20°C

Summary

Product Description	Rabbit Polyclonal antibody recognizes ACAT1
Tested Reactivity	Hu, Ms
Predict Reactivity	Mk
Tested Application	IHC-P, WB
Host	Rabbit
Clonality	Polyclonal
Isotype	IgG
Target Name	ACAT1
Species	Human
Immunogen	KLH-conjugated synthetic peptide corresponding to aa. 296-329 (C-terminus) of Human ACAT1 (NP_000010.1).
Conjugation	Un-conjugated
Alternate Names	EC 2.3.1.9; Acetoacetyl-CoA thiolase; MAT; T2; ACAT; THIL; Acetyl-CoA acetyltransferase, mitochondrial

Application Instructions

Application table	Application	Dilution
	IHC-P	Assay-dependent
	WB	1:1000

Application Note * The dilutions indicate recommended starting dilutions and the optimal dilutions or concentrations should be determined by the scientist.

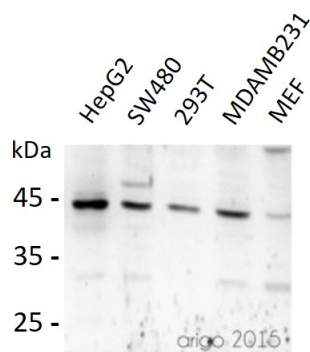
Properties

Purification	This antibody is prepared by Saturated Ammonium Sulfate (SAS) precipitation followed by dialysis against PBS.
Buffer	PBS and 0.09% (W/V) Sodium azide
Preservative	0.09% (W/V) Sodium azide
Storage instruction	For continuous use, store undiluted antibody at 2-8°C for up to a week. For long-term storage, aliquot and store at -20°C or below. Storage in frost free freezers is not recommended. Avoid repeated freeze/thaw cycles. Suggest spin the vial prior to opening. The antibody solution should be gently mixed before use.
Note	For laboratory research only, not for drug, diagnostic or other use.

Bioinformation

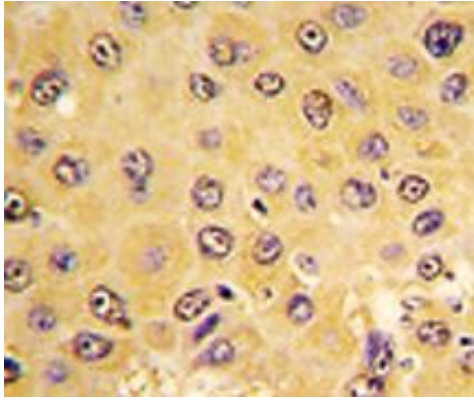
Database links	GeneID: 110446 Mouse GeneID: 38 Human Swiss-port # P24752 Human Swiss-port # Q8QZT1 Mouse
Gene Symbol	ACAT1
Gene Full Name	acetyl-CoA acetyltransferase 1
Background	This gene encodes a mitochondrially localized enzyme that catalyzes the reversible formation of acetoacetyl-CoA from two molecules of acetyl-CoA. Defects in this gene are associated with 3-ketothiolase deficiency, an inborn error of isoleucine catabolism characterized by urinary excretion of 2-methyl-3-hydroxybutyric acid, 2-methylacetoacetic acid, tiglylglycine, and butanone. [provided by RefSeq, Feb 2009]
Function	Plays a major role in ketone body metabolism. [From Uniprot]
Highlight	Related products: ACAT1 antibodies ; Anti-Rabbit IgG secondary antibodies ; Related news: Cholesterol, the weakness of anaplastic large cell lymphoma (ALCL)
Research Area	Cancer antibody; Controls and Markers antibody; Metabolism antibody; Signaling Transduction antibody
Calculated Mw	45 kDa
PTM	Succinylation at Lys-268, adjacent to a coenzyme A binding site. Desuccinylated by SIRT5 (By similarity).
Cellular Localization	Mitochondrion.

Images



ARG54705 anti-ACAT1 antibody WB image

Western blot: 30 µg of 1) HepG2, 2) SW480, 3) 293T, 4) MDAMB231, and 5) MEF lysate stained with ARG54705 anti-ACAT1 antibody at 1:500 dilution.



ARG54705 anti-ACAT1 antibody IHC-P image

Immunohistochemistry: Paraffin-embedded Human hepatocarcinoma tissue stained with ARG54705 anti-ACAT1 antibody.