

ARG54723 anti-Bcl 2 phospho (Ser70) antibody

Package: 100 µl
Store at: -20°C

Summary

Product Description	Rabbit Polyclonal antibody recognizes Bcl 2 phospho (Ser70)
Tested Reactivity	Hu
Tested Application	Dot, WB
Host	Rabbit
Clonality	Polyclonal
Isotype	IgG
Target Name	Bcl 2
Species	Human
Immunogen	KLH-conjugated phosphospecific peptide around Ser70 of Human Bcl 2 (NP_000624.2).
Conjugation	Un-conjugated
Alternate Names	BCL2; BCL2 Apoptosis Regulator; PPP1R50; Bcl-2; Protein Phosphatase 1, Regulatory Subunit 50; Apoptosis Regulator Bcl-2; B-Cell CLL/Lymphoma 2; BCL2, Apoptosis Regulator

Application Instructions

Application table	Application	Dilution
	Dot	1:500
	WB	1:1000
Application Note	* The dilutions indicate recommended starting dilutions and the optimal dilutions or concentrations should be determined by the scientist.	
Positive Control	Jurkat + Paclitaxel	

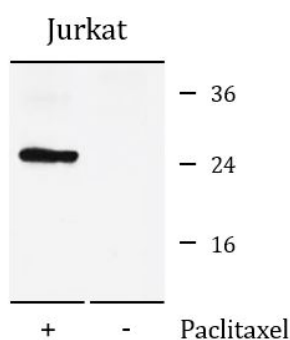
Properties

Purification	Protein A purified
Buffer	PBS and 0.09% (W/V) Sodium azide
Preservative	0.09% (W/V) Sodium azide
Storage instruction	For continuous use, store undiluted antibody at 2-8°C for up to a week. For long-term storage, aliquot and store at -20°C or below. Storage in frost free freezers is not recommended. Avoid repeated freeze/thaw cycles. Suggest spin the vial prior to opening. The antibody solution should be gently mixed before use.
Note	For laboratory research only, not for drug, diagnostic or other use.

Bioinformation

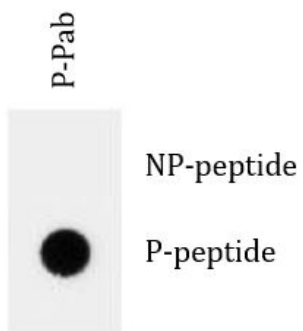
Database links	GeneID: 596 Human Swiss-port # P10415 Human
Gene Symbol	BCL2
Gene Full Name	B-cell CLL/lymphoma 2
Background	This gene encodes an integral outer mitochondrial membrane protein that blocks the apoptotic death of some cells such as lymphocytes. Constitutive expression of BCL2, such as in the case of translocation of BCL2 to Ig heavy chain locus, is thought to be the cause of follicular lymphoma. Alternative splicing results in multiple transcript variants. [provided by RefSeq, Feb 2016]
Function	Suppresses apoptosis in a variety of cell systems including factor-dependent lymphohematopoietic and neural cells. [UniProt]
Highlight	Related Antibody Duos and Panels: ARG30268 Apoptosis Marker Antibody Duo (Bcl2, Bax) ARG30269 Apoptosis Marker Antibody Duo (Bcl2, Bid) Related products: Bcl-2 antibodies ; Bcl-2 Duos / Panels ; Anti-Rabbit IgG secondary antibodies ; Related news: Lymphoma
Research Area	Cancer antibody; Cell Biology and Cellular Response antibody; Cell Death antibody; Metabolism antibody; Signaling Transduction antibody; Apoptosis Marker antibody
Calculated Mw	26 kDa
PTM	Phosphorylation/dephosphorylation on Ser-70 regulates anti-apoptotic activity. Growth factor-stimulated phosphorylation on Ser-70 by PKC is required for the anti-apoptosis activity and occurs during the G2/M phase of the cell cycle. Phosphorylated by MAPK8/JNK1 at Thr-69, Ser-70 and Ser-87, which stimulates starvation-induced autophag [UniProt]
Cellular Localization	Cytoplasm, Endoplasmic reticulum, Membrane, Mitochondrion, Mitochondrion outer membrane, Nucleus. [UniProt]

Images



ARG54723 anti-Bcl 2 phospho (Ser70) antibody WB image

Western blot: Extracts from Jurkat cells, treated or untreated with Paclitaxel. The blots were stained with ARG54723 anti-Bcl 2 phospho (Ser70) antibody.



ARG54723 anti-Bcl 2 phospho (Ser70) antibody Dot image

Dot blot: Analysis of ARG54723 anti-Bcl 2 phospho (Ser70) antibody on nitrocellulose membrane. 50 ng of Phospho-peptide or Non Phospho-peptide per dot were adsorbed. Antibody working concentrations are 0.6 µg/ml.