

ARG54730 anti-MT-ND5 antibody

Package: 100 µl
Store at: -20°C

Summary

Product Description	Rabbit Polyclonal antibody recognizes MT-ND5
Tested Reactivity	Hu
Tested Application	FACS, IHC-P, WB
Host	Rabbit
Clonality	Polyclonal
Isotype	IgG
Target Name	MT-ND5
Species	Human
Immunogen	KLH-conjugated synthetic peptide corresponding to aa. 544-570 (C-terminus) of Human ND5.
Conjugation	Un-conjugated
Alternate Names	NADH dehydrogenase subunit 5; MTND5; ND5; EC 1.6.5.3; NADH-ubiquinone oxidoreductase chain 5

Application Instructions

Application table	Application	Dilution
	FACS	1:10 - 1:50
	IHC-P	Assay-dependent
	WB	1:1000
Application Note	* The dilutions indicate recommended starting dilutions and the optimal dilutions or concentrations should be determined by the scientist.	
Positive Control	CEM	

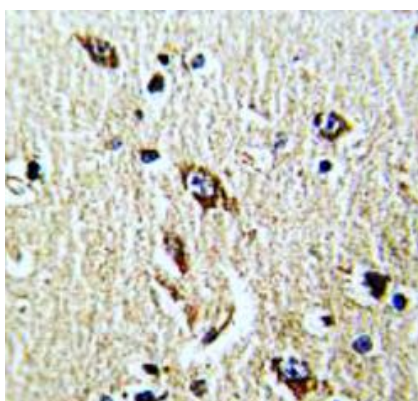
Properties

Purification	Protein A purified
Buffer	PBS and 0.09% (W/V) Sodium azide
Preservative	0.09% (W/V) Sodium azide
Storage instruction	For continuous use, store undiluted antibody at 2-8°C for up to a week. For long-term storage, aliquot and store at -20°C or below. Storage in frost free freezers is not recommended. Avoid repeated freeze/thaw cycles. Suggest spin the vial prior to opening. The antibody solution should be gently mixed before use.
Note	For laboratory research only, not for drug, diagnostic or other use.

Bioinformation

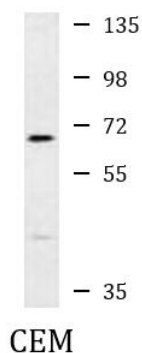
Database links	GeneID: 4540 Human Swiss-port # P03915 Human
Gene Symbol	MT-ND5
Gene Full Name	mitochondrially encoded NADH dehydrogenase 5
Function	Core subunit of the mitochondrial membrane respiratory chain NADH dehydrogenase (Complex I) that is believed to belong to the minimal assembly required for catalysis. Complex I functions in the transfer of electrons from NADH to the respiratory chain. The immediate electron acceptor for the enzyme is believed to be ubiquinone (By similarity). [UniProt]
Research Area	Cancer antibody; Metabolism antibody; Signaling Transduction antibody
Calculated Mw	67 kDa
Cellular Localization	Mitochondrion inner membrane; Multi-pass membrane protein

Images



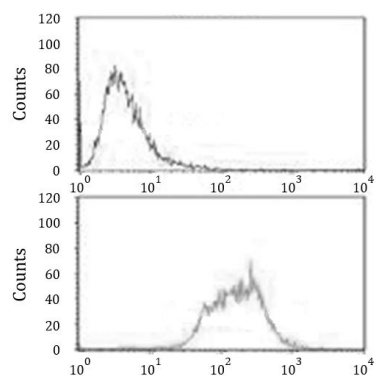
ARG54730 anti-MT-ND5 antibody IHC-P image

Immunohistochemistry: Paraffin-embedded Human brain tissue stained with ARG54730 anti-MT-ND5 antibody.



ARG54730 anti-MT-ND5 antibody WB image

Western blot: 35 µg of CEM cell lysate stained with ARG54730 anti-MT-ND5 antibody.



ARG54730 anti-MT-ND5 antibody FACS image

Flow Cytometry: CEM cells stained with ARG54730 anti-MT-ND5 antibody (bottom histogram) or without primary antibody control (top histogram).