

ARG54745 Goat anti-Rabbit IgG (H+L) antibody (FITC)

Package: 500 µg
Store at: 4°C

Summary

Product Description	FITC-conjugated Goat Polyclonal antibody recognizes Rabbit IgG (H+L)
Tested Reactivity	Rb
Species Does Not React With	Hu, Ms, Bov, Hrs
Tested Application	FACS, ICC/IF
Specificity	The antibody is purified on immunoaffinity rabbit IgG (H+L) column. Using ELISA, this antibody reacts with rabbit IgG (H+L), heavy and light chains and light chains of other rabbit immunoglobulins. This antibody does not cross react with non-immunoglobulin serum proteins. This antibody has minimum cross reactivity with bovine, horse, human and mouse serum proteins. Cross reactivity to other serum proteins have not been determined.
Host	Goat
Clonality	Polyclonal
Isotype	IgG
Target Name	IgG (H+L)
Species	Rabbit
Immunogen	Purified Rabbit IgG (H+L)
Target Ig	Rabbit IgG (H+L)
Conjugation	FITC

Application Instructions

Application table	Application	Dilution
	FACS	1:1000 - 1:10000
	ICC/IF	1:200 - 1:1000
Application Note	Note: Based on the reference DOI: 10.1016/j.matdes.2022.110581 This antibody may also suitable for IHC-P application. * The dilutions indicate recommended starting dilutions and the optimal dilutions or concentrations should be determined by the scientist.	

Properties

Form	Liquid
Buffer	10 mM phosphate buffer (pH 7.6), 150 mM NaCl, 0.05% Sodium azide and 1% BSA.
Preservative	0.05% Sodium azide
Stabilizer	1% BSA
Concentration	1 mg/ml

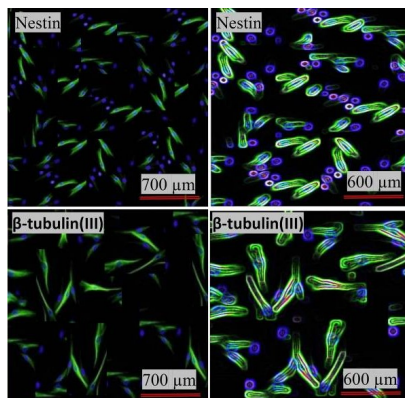
Storage instruction Aliquot and store in the dark at 2-8°C. Keep protected from prolonged exposure to light. Avoid repeated freeze/thaw cycles. Suggest spin the vial prior to opening. The antibody solution should be gently mixed before use.

Note For laboratory research only, not for drug, diagnostic or other use.

Bioinformation

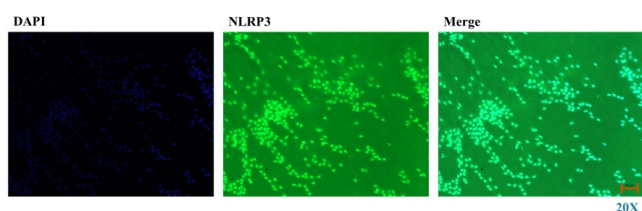
Research Area Immune System antibody

Images



ARG54745 Goat anti-Rabbit IgG (H+L) antibody (FITC) ICC/IF image

Immunofluorescence: Neuron cells stained with ARG54745 Goat anti-Rabbit IgG (H+L) antibody (FITC) at 1:1000 dilution.



ARG54745 Goat anti-Rabbit IgG (H+L) antibody (FITC) ICC/IF image (Customer's Feedback)

Immunofluorescence: Human conjunctiva stained with [ARG40539](#) anti-NALP3 / Cryopyrin antibody at 1:200 dilution and ARG54745 Goat anti-Rabbit IgG (H+L) antibody (FITC) at 1:500 dilution.