

ARG54807 anti-ALDH1A3 antibody

Package: 100 µl
Store at: -20°C

Summary

Product Description	Rabbit Polyclonal antibody recognizes ALDH1A3
Tested Reactivity	Hu, Ms
Tested Application	IHC-P, WB
Host	Rabbit
Clonality	Polyclonal
Isotype	IgG
Target Name	ALDH1A3
Species	Human
Immunogen	KLH-conjugated synthetic peptide corresponding to aa. 24-51 (N-terminus) of Human ALDH1A3.
Conjugation	Un-conjugated
Alternate Names	RALDH-3; EC 1.2.1.5; Aldehyde dehydrogenase 6; ALDH6; RALDH3; MCOP8; RaLDH3; ALDH1A6; Aldehyde dehydrogenase family 1 member A3; Retinaldehyde dehydrogenase 3

Application Instructions

Application table	Application	Dilution
	IHC-P	Assay-dependent
	WB	1:1000
Application Note	* The dilutions indicate recommended starting dilutions and the optimal dilutions or concentrations should be determined by the scientist.	
Positive Control	293	

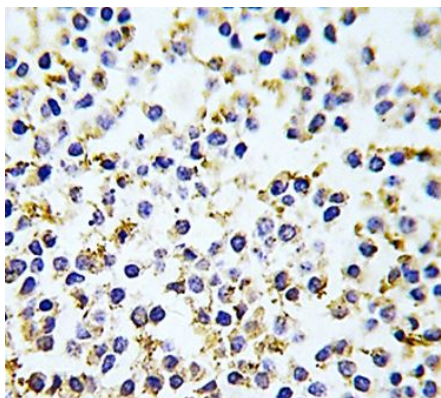
Properties

Form	Liquid
Purification	This antibody is prepared by Saturated Ammonium Sulfate (SAS) precipitation followed by dialysis against PBS.
Buffer	PBS and 0.09% (W/V) Sodium azide
Preservative	0.09% (W/V) Sodium azide
Storage instruction	For continuous use, store undiluted antibody at 2-8°C for up to a week. For long-term storage, aliquot and store at -20°C or below. Storage in frost free freezers is not recommended. Avoid repeated freeze/thaw cycles. Suggest spin the vial prior to opening. The antibody solution should be gently mixed before use.
Note	For laboratory research only, not for drug, diagnostic or other use.

Bioinformation

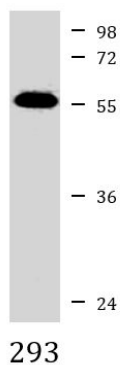
Database links	GeneID: 220 Human GeneID: 56847 Mouse Swiss-port # P47895 Human Swiss-port # Q9JHW9 Mouse
Gene Symbol	ALDH1A3
Gene Full Name	aldehyde dehydrogenase 1 family, member A3
Background	This gene encodes an aldehyde dehydrogenase enzyme that uses retinal as a substrate. Mutations in this gene have been associated with microphthalmia, isolated 8, and expression changes have also been detected in tumor cells. Alternative splicing results in multiple transcript variants. [provided by RefSeq, Jun 2014]
Function	Recognizes as substrates free retinal and cellular retinol-binding protein-bound retinal. Seems to be the key enzyme in the formation of an RA gradient along the dorso-ventral axis during the early eye development and also in the development of the olfactory system (By similarity). [UniProt]
Research Area	Metabolism antibody; Neuroscience antibody; Signaling Transduction antibody
Calculated Mw	56 kDa
Cellular Localization	Cytoplasm.

Images



ARG54807 anti-ALDH1A3 antibody IHC-P image

Immunohistochemistry: Formalin-fixed and paraffin-embedded Human kidney tissue stained with ARG54807 anti-ALDH1A3 antibody.



ARG54807 anti-ALDH1A3 antibody WB image

Western blot: 35 µg of 293 cell lysate stained with ARG54807 anti-ALDH1A3 antibody.