

## ARG54826 anti-ATHL1 antibody

Package: 100 µl  
Store at: -20°C

### Summary

Product Description	Rabbit Polyclonal antibody recognizes ATHL1
Tested Reactivity	Hu
Tested Application	FACS, IHC-P, WB
Host	Rabbit
Clonality	Polyclonal
Isotype	IgG
Target Name	ATHL1
Species	Human
Immunogen	KLH-conjugated synthetic peptide corresponding to aa. 688-716 (C-terminus) of Human ATHL1.
Conjugation	Un-conjugated
Alternate Names	Acid trehalase-like protein 1; EC 3.2.1.-

### Application Instructions

Application table	Application	Dilution
	FACS	1:10 - 1:50
	IHC-P	Assay-dependent
	WB	1:1000
Application Note	* The dilutions indicate recommended starting dilutions and the optimal dilutions or concentrations should be determined by the scientist.	
Positive Control	MDA-MB-435	

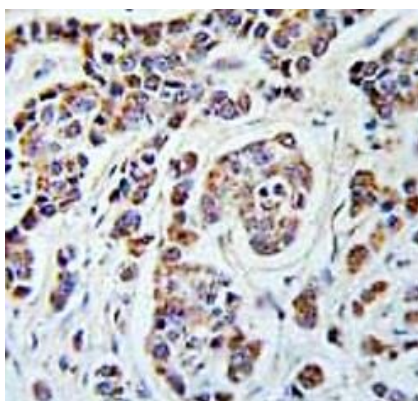
### Properties

Form	Liquid
Purification	Purification with Protein A and immunogen peptide.
Buffer	PBS and 0.09% (W/V) Sodium azide
Preservative	0.09% (W/V) Sodium azide
Storage instruction	For continuous use, store undiluted antibody at 2-8°C for up to a week. For long-term storage, aliquot and store at -20°C or below. Storage in frost free freezers is not recommended. Avoid repeated freeze/thaw cycles. Suggest spin the vial prior to opening. The antibody solution should be gently mixed before use.
Note	For laboratory research only, not for drug, diagnostic or other use.

## Bioinformation

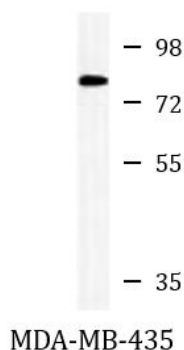
Database links	<a href="#">GeneID: 80162 Human</a> <a href="#">Swiss-port # Q32M88 Human</a>
Gene Symbol	ATHL1
Gene Full Name	ATH1, acid trehalase-like 1 (yeast)
Research Area	Cell Biology and Cellular Response antibody; Metabolism antibody; Signaling Transduction antibody
Calculated Mw	81 kDa

## Images



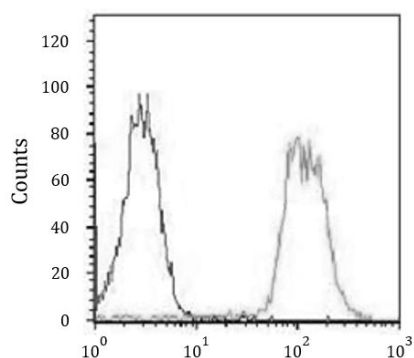
ARG54826 anti-ATHL1 antibody IHC-P image

Immunohistochemistry: Formalin-fixed and paraffin-embedded Human breast carcinoma stained with ARG54826 anti-ATHL1 antibody.



ARG54826 anti-ATHL1 antibody WB image

Western blot: 35 µg of MDA-MB-435 cell lysate stained with ARG54826 anti-ATHL1 antibody.



ARG54826 anti-ATHL1 antibody FACS image

Flow Cytometry: MDA-MB-435 cells stained with ARG54826 anti-ATHL1 antibody (right histogram) or without primary antibody control (left histogram), followed by incubation with FITC labelled secondary antibody.