

## ARG54850 anti-LPAR2 / EDG4 antibody

Package: 100 µl  
Store at: -20°C

### Summary

Product Description	Rabbit Polyclonal antibody recognizes LPAR2 / EDG4
Tested Reactivity	Hu
Predict Reactivity	Mk
Tested Application	IHC-P, WB
Host	Rabbit
Clonality	Polyclonal
Isotype	IgG
Target Name	LPAR2 / EDG4
Species	Human
Immunogen	KLH-conjugated synthetic peptide corresponding to aa. 3-32 (N-terminus) of Human EDG4.
Conjugation	Un-conjugated
Alternate Names	LPA2; EDG4; Lysophosphatidic acid receptor Edg-4; EDG-4; Lysophosphatidic acid receptor 2; LPA receptor 2; LPA-2

### Application Instructions

Application table	Application	Dilution
	IHC-P	Assay-dependent
	WB	1:1000
Application Note	* The dilutions indicate recommended starting dilutions and the optimal dilutions or concentrations should be determined by the scientist.	
Positive Control	MDA-MB-231	

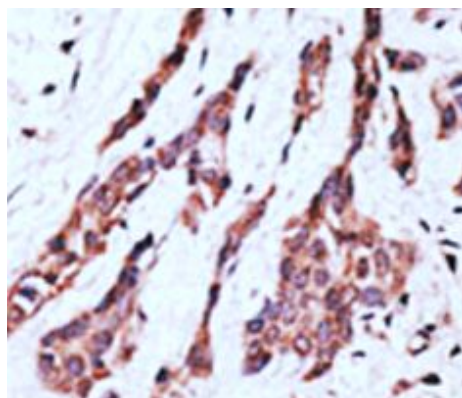
### Properties

Form	Liquid
Purification	Purification with Protein G.
Buffer	PBS and 0.09% (W/V) Sodium azide
Preservative	0.09% (W/V) Sodium azide
Storage instruction	For continuous use, store undiluted antibody at 2-8°C for up to a week. For long-term storage, aliquot and store at -20°C or below. Storage in frost free freezers is not recommended. Avoid repeated freeze/thaw cycles. Suggest spin the vial prior to opening. The antibody solution should be gently mixed before use.
Note	For laboratory research only, not for drug, diagnostic or other use.

## Bioinformation

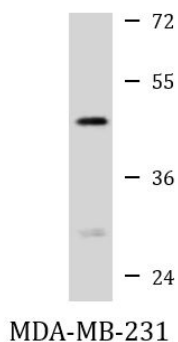
Database links	<a href="#">GeneID: 9170 Human</a> <a href="#">Swiss-port # Q9HBW0 Human</a>
Gene Symbol	LPAR2
Gene Full Name	lysophosphatidic acid receptor 2
Background	This gene encodes a member of family I of the G protein-coupled receptors, as well as the EDG family of proteins. This protein functions as a lysophosphatidic acid (LPA) receptor and contributes to Ca <sup>2+</sup> mobilization, a critical cellular response to LPA in cells, through association with Gi and Gq proteins. An alternative splice variant has been described but its full length sequence has not been determined. [provided by RefSeq, Jul 2008]
Function	Receptor for lysophosphatidic acid (LPA), a mediator of diverse cellular activities. Seems to be coupled to the G(i)/G(o), G(12)/G(13), and G(q) families of heteromeric G proteins. Plays a key role in phospholipase C-beta (PLC-beta) signaling pathway. Stimulates phospholipase C (PLC) activity in a manner that is independent of RALA activation. [UniProt]
Research Area	Gene Regulation antibody; Signaling Transduction antibody
Calculated Mw	39 kDa
Cellular Localization	Cell surface. Cell membrane; Multi-pass membrane protein. Note=Prior to LPA treatment found predominantly at the cell surface but in the presence of LPA colocalizes with RALA in the endocytic vesicles

## Images



ARG54850 anti-LPAR2 / EDG4 antibody (N-term) IHC-P image

Immunohistochemistry: Formalin-fixed and paraffin-embedded Human breast cancer tissue stained with ARG54850 anti-LPAR2 / EDG4 antibody (N-term).



ARG54850 anti-LPAR2 / EDG4 antibody (N-term) WB image

Western blot: 35 µg of MDA-MB-231 cell lysate stained with ARG54850 anti-LPAR2 / EDG4 antibody (N-term) at 1:1000 dilution.