

**ARG54857**  
**anti-KDM6B / JMJD3 antibody**Package: 100 µl  
Store at: -20°C

### Summary

Product Description	Rabbit Polyclonal antibody recognizes KDM6B / JMJD3
Tested Reactivity	Hu
Predict Reactivity	Ms
Tested Application	ICC/IF, IHC-P, WB
Host	Rabbit
Clonality	Polyclonal
Isotype	IgG
Target Name	KDM6B / JMJD3
Species	Human
Immunogen	KLH-conjugated synthetic peptide corresponding to aa. 1-30 (N-terminus) of Human JMJD3.
Conjugation	Un-conjugated
Alternate Names	JmjC domain-containing protein 3; Lysine-specific demethylase 6B; JMJD3; Lysine demethylase 6B; Jumonji domain-containing protein 3; EC 1.14.11.-

### Application Instructions

Application table	Application	Dilution
	ICC/IF	1:10 - 1:50
	IHC-P	Assay-dependent
	WB	1:1000
Application Note	* The dilutions indicate recommended starting dilutions and the optimal dilutions or concentrations should be determined by the scientist.	
Positive Control	HeLa	

### Properties

Form	Liquid
Purification	Purification with Protein G.
Buffer	PBS and 0.09% (W/V) Sodium azide
Preservative	0.09% (W/V) Sodium azide
Storage instruction	For continuous use, store undiluted antibody at 2-8°C for up to a week. For long-term storage, aliquot and store at -20°C or below. Storage in frost free freezers is not recommended. Avoid repeated freeze/thaw cycles. Suggest spin the vial prior to opening. The antibody solution should be gently mixed before use.

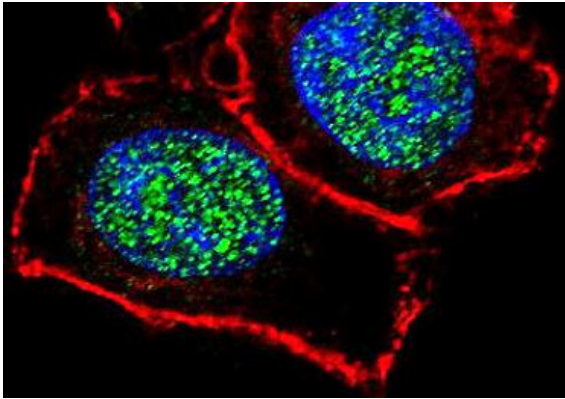
Note For laboratory research only, not for drug, diagnostic or other use.

## Bioinformation

---

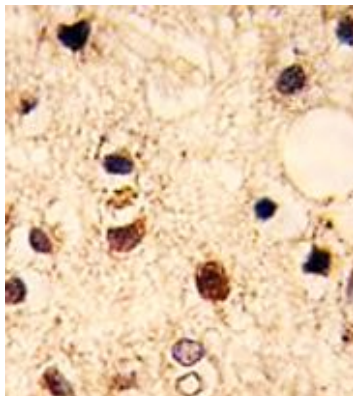
Database links	<a href="#">GeneID: 23135 Human</a> <a href="#">Swiss-port # O15054 Human</a>
Gene Symbol	KDM6B
Gene Full Name	lysine (K)-specific demethylase 6B
Function	Histone demethylase that specifically demethylates 'Lys-27' of histone H3, thereby playing a central role in histone code. Demethylates trimethylated and dimethylated H3 'Lys-27'. Plays a central role in regulation of posterior development, by regulating HOX gene expression. Involved in inflammatory response by participating in macrophage differentiation in case of inflammation by regulating gene expression and macrophage differentiation. [UniProt]
Highlight	Related products: <a href="#">KDM6B antibodies</a> ; <a href="#">Anti-Rabbit IgG secondary antibodies</a> ; Related news: <a href="#">Hypoxia-induced transcription, histone demethylases are involved</a>
Research Area	Gene Regulation antibody
Calculated Mw	177 kDa
Cellular Localization	Nucleus.

## Images



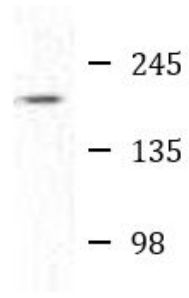
ARG54857 anti-KDM6B / JMJD3 antibody ICC/IF image

Immunofluorescence: HeLa cells stained with ARG54857 anti-KDM6B / JMJD3 antibody (green). Actin filaments have been labeled with Alexa Fluor 555 phalloidin (red). DAPI (blue) for nuclear staining.



ARG54857 anti-KDM6B / JMJD3 antibody IHC-P image

Immunohistochemistry: Formalin-fixed and paraffin-embedded Human brain tissue stained with ARG54857 anti-KDM6B / JMJD3 antibody.



HeLa

ARG54857 anti-KDM6B / JMJD3 antibody WB image

Western blot: HeLa cell lysate stained with ARG54857 anti-KDM6B / JMJD3 antibody.