

**ARG54864**  
**anti-MTMR4 antibody**Package: 100 µl  
Store at: -20°C

### Summary

Product Description	Rabbit Polyclonal antibody recognizes MTMR4
Tested Reactivity	Hu, Ms
Tested Application	IHC-P, WB
Host	Rabbit
Clonality	Polyclonal
Isotype	IgG
Target Name	MTMR4
Species	Human
Immunogen	KLH-conjugated synthetic peptide corresponding to aa. 1155-1187 (C-terminus) of Human MTMR4.
Conjugation	Un-conjugated
Alternate Names	FYVE-DSP2; Zinc finger FYVE domain-containing protein 11; ZFYVE11; Myotubularin-related protein 4; EC 3.1.3.48; FYVE domain-containing dual specificity protein phosphatase 2

### Application Instructions

Application table	Application	Dilution
	IHC-P	Assay-dependent
	WB	1:1000
Application Note	* The dilutions indicate recommended starting dilutions and the optimal dilutions or concentrations should be determined by the scientist.	
Positive Control	Mouse heart	

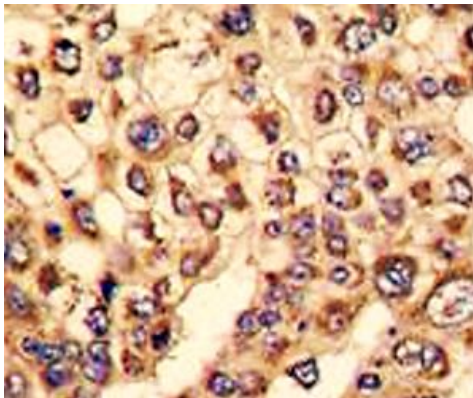
### Properties

Form	Liquid
Purification	Purification with Protein G.
Buffer	PBS and 0.09% (W/V) Sodium azide
Preservative	0.09% (W/V) Sodium azide
Storage instruction	For continuous use, store undiluted antibody at 2-8°C for up to a week. For long-term storage, aliquot and store at -20°C or below. Storage in frost free freezers is not recommended. Avoid repeated freeze/thaw cycles. Suggest spin the vial prior to opening. The antibody solution should be gently mixed before use.
Note	For laboratory research only, not for drug, diagnostic or other use.

Bioinformation

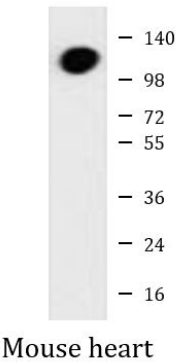
Database links	<a href="#">GeneID: 170749 Mouse</a> <a href="#">GeneID: 9110 Human</a> <a href="#">Swiss-port # Q91XS1 Mouse</a> <a href="#">Swiss-port # Q9NYA4 Human</a>
Gene Symbol	MTMR4
Gene Full Name	myotubularin related protein 4
Function	Dephosphorylates proteins phosphorylated on Ser, Thr, and Tyr residues and low molecular weight phosphatase substrate para-nitrophenylphosphate. Phosphorylates phosphatidylinositol 3,4,5-trisphosphate (PIP3). [UniProt]
Research Area	Signaling Transduction antibody
Calculated Mw	133 kDa
Cellular Localization	Cytoplasm. Membrane; Peripheral membrane protein. Note=Localized to perinuclear region

Images



ARG54864 anti-MTMR4 antibody IHC-P image

Immunohistochemistry: Formalin-fixed and paraffin-embedded Human hepatocarcinoma tissue stained with ARG54864 anti-MTMR4 antibody.



ARG54864 anti-MTMR4 antibody WB image

Western blot: Mouse heart lysate stained with ARG54864 anti-MTMR4 antibody.