

ARG54876 anti-PI3 Kinase Class III antibody

Package: 100 µl
Store at: -20°C

Summary

Product Description	Rabbit Polyclonal antibody recognizes PI3 Kinase Class III
Tested Reactivity	Hu
Predict Reactivity	Ms, Rat, Pig, Xenopus
Tested Application	ICC/IF, IHC-P, WB
Host	Rabbit
Clonality	Polyclonal
Isotype	IgG
Target Name	PI3 Kinase Class III
Species	Human
Immunogen	KLH-conjugated synthetic peptide corresponding to aa. 24-53 (N-terminus) of Human PI3 Kinase Class III.
Conjugation	Un-conjugated
Alternate Names	PtdIns-3-kinase type 3; VPS34; EC 2.7.1.137; PI3K type 3; Phosphatidylinositol 3-kinase p100 subunit; Phosphatidylinositol 3-kinase catalytic subunit type 3; PI3-kinase type 3; Phosphoinositide-3-kinase class 3; hVps34; Vps34

Application Instructions

Application table	Application	Dilution
	ICC/IF	1:10 - 1:50
	IHC-P	Assay-dependent
	WB	1:1000
Application Note	* The dilutions indicate recommended starting dilutions and the optimal dilutions or concentrations should be determined by the scientist.	
Positive Control	HeLa	

Properties

Form	Liquid
Purification	Purification with Protein G.
Buffer	PBS and 0.09% (W/V) Sodium azide
Preservative	0.09% (W/V) Sodium azide
Storage instruction	For continuous use, store undiluted antibody at 2-8°C for up to a week. For long-term storage, aliquot and store at -20°C or below. Storage in frost free freezers is not recommended. Avoid repeated freeze/thaw cycles. Suggest spin the vial prior to opening. The antibody solution should be gently mixed

before use.

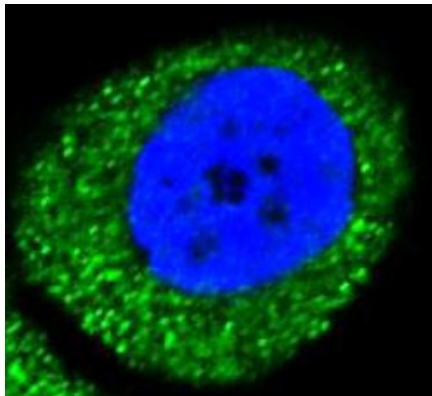
Note

For laboratory research only, not for drug, diagnostic or other use.

Bioinformation

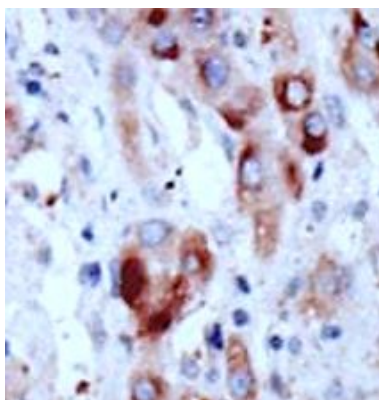
Database links	GeneID: 5289 Human Swiss-port # Q8NEB9 Human
Gene Symbol	PIK3C3
Gene Full Name	phosphatidylinositol 3-kinase, catalytic subunit type 3
Function	Catalytic subunit of the PI3K complex that mediates formation of phosphatidylinositol 3-phosphate which plays a key role in initiation and maturation of autophagosomes. Involved in the transport of lysosomal enzyme precursors to lysosomes. Required for the abscission step in cytokinesis. Required for transport from early to late endosomes. [UniProt]
Research Area	Immune System antibody; Metabolism antibody; Signaling Transduction antibody
Calculated Mw	102 kDa
Cellular Localization	Midbody. Late endosome. Note=Localizes also to discrete punctae along the ciliary axoneme and to the base of the ciliary axoneme.

Images



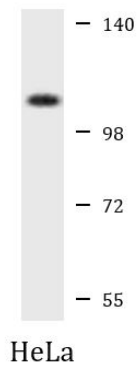
ARG54876 anti-PI3 Kinase Class III antibody ICC/IF image

Immunofluorescence: HeLa cells stained with ARG54876 anti-PI3 Kinase Class III antibody (green). DAPI (blue) for nuclear staining.



ARG54876 anti-PI3 Kinase Class III antibody IHC-P image

Immunohistochemistry: Formalin-fixed and paraffin-embedded Human hepatocarcinoma tissue stained with ARG54876 anti-PI3 Kinase Class III antibody.



ARG54876 anti-PI3 Kinase Class III antibody WB image

Western blot: 20 µg of HeLa cell lysate stained with ARG54876 anti-PI3 Kinase Class III antibody at 1:1000 dilution.