

ARG54884 anti-SARS-CoV M protein antibody

Package: 100 µl
Store at: -20°C

Summary

Product Description	Rabbit Polyclonal antibody recognizes SARS-CoV M protein
Tested Reactivity	Virus
Tested Application	ELISA, WB
Host	Rabbit
Clonality	Polyclonal
Isotype	IgG
Target Name	SARS-CoV M protein
Immunogen	KLH-conjugated synthetic peptide corresponding to aa. 192-221 of the C-terminus region of SARS-CoV M protein.
Conjugation	Un-conjugated
Alternate Names	SARS-CoV matrix protein; SARS-CoV Membrane protein; SARS-CoV M protein; SARS-CoV E1 glycoprotein; SARS-CoV Matrix glycoprotein; SARS-CoV Membrane glycoprotein; SARS-CoV PUPM

Application Instructions

Application table	Application	Dilution
	ELISA	Assay-dependent
	WB	1:500 - 1:2000
Application Note	* The dilutions indicate recommended starting dilutions and the optimal dilutions or concentrations should be determined by the scientist.	

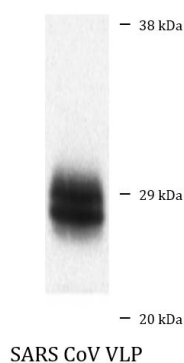
Properties

Form	Liquid
Purification	Purification with Protein G.
Buffer	PBS and 0.09% (W/V) Sodium azide
Preservative	0.09% (W/V) Sodium azide
Storage instruction	For continuous use, store undiluted antibody at 2-8°C for up to a week. For long-term storage, aliquot and store at -20°C or below. Storage in frost free freezers is not recommended. Avoid repeated freeze/thaw cycles. Suggest spin the vial prior to opening. The antibody solution should be gently mixed before use.
Note	For laboratory research only, not for drug, diagnostic or other use.

Bioinformation

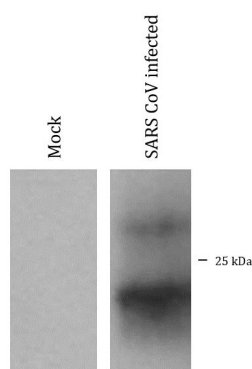
Gene Symbol	M
Gene Full Name	matrix protein
Function	Component of the viral envelope that plays a central role in virus morphogenesis and assembly via its interactions with other viral proteins. [UniProt]
Highlight	<p>Related products: SARS-CoV antibodies; SARS-CoV ELISA Kits; SARS-CoV recombinant proteins; Anti-Rabbit IgG secondary antibodies;</p> <p>Related news: HMGB1, a biomarker and therapeutic target in COVID-19 ACE2, receptor of 2019-nCoV Exploring Antiviral Immune Response</p>
Research Area	Microbiology and Infectious Disease antibody
Calculated Mw	25 kDa
Cellular Localization	Virion membrane; Multi-pass membrane protein. Host Golgi apparatus membrane; Multi-pass membrane protein Note=Largely embedded in the lipid bilayer.

Images



ARG54884 anti-SARS-CoV M protein antibody WB image

Western blot: SARS coronavirus-like particles (SARS CoV VLP) stained with ARG54884 anti-SARS-CoV M protein antibody.



ARG54884 anti-SARS-CoV M protein antibody WB image

Western blot: Mock infected or SARS CoV infected Vero cells. Cell lysates were stained with ARG54884 anti-SARS-CoV M protein antibody.