

ARG54958 anti-Bcl G antibody

Package: 100 µl
Store at: -20°C

Summary

Product Description	Rabbit Polyclonal antibody recognizes Bcl G
Tested Reactivity	Hu
Tested Application	IHC-P, WB
Host	Rabbit
Clonality	Polyclonal
Isotype	IgG
Target Name	Bcl G
Species	Human
Immunogen	KLH-conjugated synthetic peptide corresponding to aa. 194-229 of Human Bcl G.
Conjugation	Un-conjugated
Alternate Names	BCLG; Bcl2-L-14; Apoptosis regulator Bcl-G; Apoptosis facilitator Bcl-2-like protein 14

Application Instructions

Application table	Application	Dilution
	IHC-P	Assay-dependent
	WB	1:1000
Application Note	* The dilutions indicate recommended starting dilutions and the optimal dilutions or concentrations should be determined by the scientist.	
Positive Control	K562	

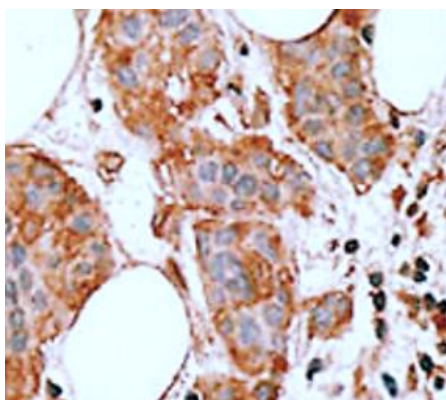
Properties

Form	Liquid
Purification	Purification with Protein G.
Buffer	PBS and 0.09% (W/V) Sodium azide
Preservative	0.09% (W/V) Sodium azide
Storage instruction	For continuous use, store undiluted antibody at 2-8°C for up to a week. For long-term storage, aliquot and store at -20°C or below. Storage in frost free freezers is not recommended. Avoid repeated freeze/thaw cycles. Suggest spin the vial prior to opening. The antibody solution should be gently mixed before use.
Note	For laboratory research only, not for drug, diagnostic or other use.

Bioinformation

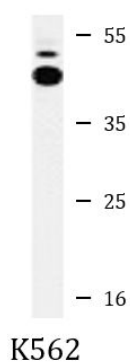
Database links	GeneID: 79370 Human Swiss-port # Q9BZR8 Human
Gene Symbol	BCL2L14
Gene Full Name	BCL2-like 14 (apoptosis facilitator)
Background	The protein encoded by this gene belongs to the BCL2 protein family. BCL2 family members form hetero- or homodimers and act as anti- or pro-apoptotic regulators that are involved in a wide variety of cellular activities. Overexpression of this gene has been shown to induce apoptosis in cells. Three alternatively spliced transcript variants encoding two distinct isoforms have been reported for this gene. [provided by RefSeq, May 2009]
Function	Plays a role in apoptosis. [UniProt]
Research Area	Cell Biology and Cellular Response antibody; Cell Death antibody; Controls and Markers antibody
Calculated Mw	37 kDa
PTM	Phosphorylated by MELK, leading to inhibit its pro-apoptotic function.
Cellular Localization	Cytoplasm. Isoform 2: Endomembrane system. Note=Predominantly localized to cytosolic organelles

Images



ARG54958 anti-Bcl G antibody IHC-P image

Immunohistochemistry: Formalin-fixed and paraffin-embedded Human breast carcinoma tissue stained with ARG54958 anti-Bcl G antibody.



ARG54958 anti-Bcl G antibody WB image

Western blot: 35 µg of K562 cell lysate stained with ARG54958 anti-Bcl G antibody.