

## ARG54963 anti-COX6A2 antibody

Package: 100 µl  
Store at: -20°C

### Summary

Product Description	Rabbit Polyclonal antibody recognizes COX6A2
Tested Reactivity	Hu
Tested Application	IHC-P, WB
Host	Rabbit
Clonality	Polyclonal
Isotype	IgG
Target Name	COX6A2
Species	Human
Immunogen	KLH-conjugated synthetic peptide corresponding to aa. 37-66 (Center) of Human COX6A2.
Conjugation	Un-conjugated
Alternate Names	COX6AH; Cytochrome c oxidase subunit VIA-muscle; Cytochrome c oxidase polypeptide VIa-heart; Cytochrome c oxidase subunit 6A2, mitochondrial; COX VIa-M; COXVIAH

### Application Instructions

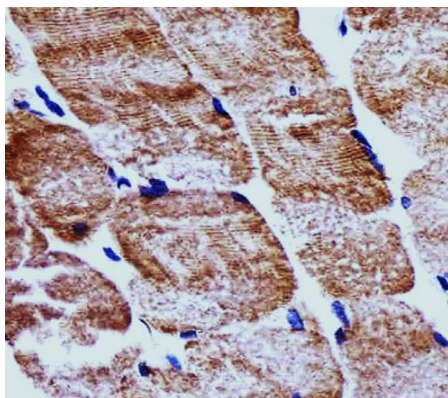
Application table	Application	Dilution
	IHC-P	Assay-dependent
	WB	1:1000
Application Note	* The dilutions indicate recommended starting dilutions and the optimal dilutions or concentrations should be determined by the scientist.	
Positive Control	Human skeletal muscle	

### Properties

Form	Liquid
Purification	Purification with Protein A and immunogen peptide.
Buffer	PBS and 0.09% (W/V) Sodium azide
Preservative	0.09% (W/V) Sodium azide
Storage instruction	For continuous use, store undiluted antibody at 2-8°C for up to a week. For long-term storage, aliquot and store at -20°C or below. Storage in frost free freezers is not recommended. Avoid repeated freeze/thaw cycles. Suggest spin the vial prior to opening. The antibody solution should be gently mixed before use.
Note	For laboratory research only, not for drug, diagnostic or other use.

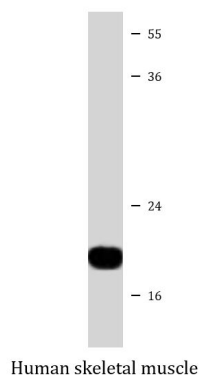
Database links	<a href="#">GeneID: 1339 Human</a> <a href="#">Swiss-port # Q02221 Human</a>
Gene Symbol	COX6A2
Gene Full Name	cytochrome c oxidase subunit VIa polypeptide 2
Background	Cytochrome c oxidase (COX), the terminal enzyme of the mitochondrial respiratory chain, catalyzes the electron transfer from reduced cytochrome c to oxygen. It is a heteromeric complex consisting of 3 catalytic subunits encoded by mitochondrial genes and multiple structural subunits encoded by nuclear genes. The mitochondrially-encoded subunits function in electron transfer, and the nuclear-encoded subunits may be involved in the regulation and assembly of the complex. This nuclear gene encodes polypeptide 2 (heart/muscle isoform) of subunit VIa, and polypeptide 2 is present only in striated muscles. Polypeptide 1 (liver isoform) of subunit VIa is encoded by a different gene, and is found in all non-muscle tissues. These two polypeptides share 66% amino acid sequence identity. [provided by RefSeq, Jul 2008]
Function	This protein is one of the nuclear-coded polypeptide chains of cytochrome c oxidase, the terminal oxidase in mitochondrial electron transport. [UniProt]
Research Area	Controls and Markers antibody; Metabolism antibody; Signaling Transduction antibody
Calculated Mw	11 kDa
Cellular Localization	Mitochondrion inner membrane.

## Images



ARG54963 anti-COX6A2 antibody IHC-P image

Immunohistochemistry: Paraffin-embedded Human skeletal muscle tissue stained with ARG54963 anti-COX6A2 antibody at 1:25 dilution.



ARG54963 anti-COX6A2 antibody WB image

Western blot: 20 µg of Human skeletal muscle lysate stained with ARG54963 anti-COX6A2 antibody at 1:1000 dilution.