

ARG54990 anti-ULK3 antibody

Package: 100 µl
Store at: -20°C

Summary

Product Description	Mouse Monoclonal antibody recognizes ULK3
Tested Reactivity	Hu, Ms, Rat
Tested Application	WB
Host	Mouse
Clonality	Monoclonal
Clone	1404CT148.89.25
Isotype	IgG1, kappa
Target Name	ULK3
Species	Human
Immunogen	KLH-conjugated synthetic peptide corresponding to aa. 435-468 of Human ULK3.
Conjugation	Un-conjugated
Alternate Names	EC 2.7.11.1; Unc-51-like kinase 3; Serine/threonine-protein kinase ULK3

Application Instructions

Application table	Application	Dilution
	WB	1:1000
Application Note	* The dilutions indicate recommended starting dilutions and the optimal dilutions or concentrations should be determined by the scientist.	
Positive Control	HeLa	

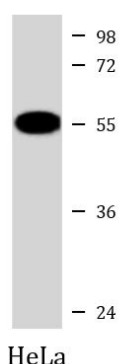
Properties

Form	Liquid
Purification	Purification with Protein G.
Buffer	PBS and 0.09% (W/V) Sodium azide
Preservative	0.09% (W/V) Sodium azide
Storage instruction	For continuous use, store undiluted antibody at 2-8°C for up to a week. For long-term storage, aliquot and store at -20°C or below. Storage in frost free freezers is not recommended. Avoid repeated freeze/thaw cycles. Suggest spin the vial prior to opening. The antibody solution should be gently mixed before use.
Note	For laboratory research only, not for drug, diagnostic or other use.

Bioinformation

Gene Symbol	ULK3
Gene Full Name	unc-51 like kinase 3
Function	Serine/threonine protein kinase that acts as a regulator of Sonic hedgehog (SHH) signaling and autophagy. Acts as a negative regulator of SHH signaling in the absence of SHH ligand: interacts with SUFU, thereby inactivating the protein kinase activity and preventing phosphorylation of GLI proteins (GLI1, GLI2 and/or GLI3). Positively regulates SHH signaling in the presence of SHH: dissociates from SUFU, autophosphorylates and mediates phosphorylation of GLI2, activating it and promoting its nuclear translocation. Phosphorylates in vitro GLI2, as well as GLI1 and GLI3, although less efficiently. Also acts as a regulator of autophagy: following cellular senescence, able to induce autophagy. [UniProt]
Research Area	Signaling Transduction antibody
Calculated Mw	53 kDa
PTM	Autophosphorylated. Autophosphorylation is blocked by interaction with SUFU.
Cellular Localization	Cytoplasm. Note=Localizes to pre-autophagosomal structure during cellular senescence

Images



ARG54990 anti-ULK3 antibody WB image

Western blot: 35 µg of HeLa cell lysate stained with ARG54990 anti-ULK3 antibody at 1:1000 dilution.