

ARG55012 anti-VTI1A antibody

Package: 100 µl
Store at: -20°C

Summary

Product Description	Rabbit Polyclonal antibody recognizes VTI1A
Tested Reactivity	Hu
Tested Application	FACS, IHC-P, WB
Host	Rabbit
Clonality	Polyclonal
Isotype	IgG
Target Name	VTI1A
Species	Human
Immunogen	KLH-conjugated synthetic peptide corresponding to aa. 140-169 (C-terminus) of Human VTI1A.
Conjugation	Un-conjugated
Alternate Names	MVti1; MMDS3; Vti1-rp2; Vesicle transport through interaction with t-SNAREs homolog 1A; Vesicle transport v-SNARE protein Vti1-like 2; VTI1RP2

Application Instructions

Application table	Application	Dilution
	FACS	1:10 - 1:50
	IHC-P	Assay-dependent
	WB	1:1000
Application Note	* The dilutions indicate recommended starting dilutions and the optimal dilutions or concentrations should be determined by the scientist.	
Positive Control	U-251 MG	

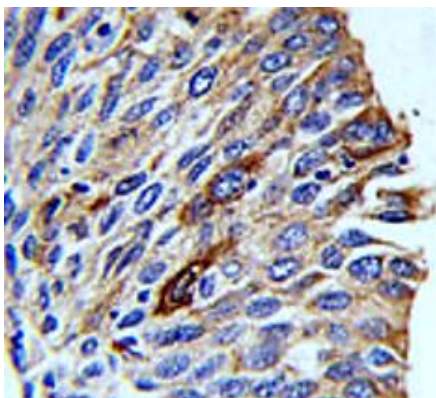
Properties

Form	Liquid
Purification	Purification with Protein A and immunogen peptide.
Buffer	PBS and 0.09% (W/V) Sodium azide
Preservative	0.09% (W/V) Sodium azide
Storage instruction	For continuous use, store undiluted antibody at 2-8°C for up to a week. For long-term storage, aliquot and store at -20°C or below. Storage in frost free freezers is not recommended. Avoid repeated freeze/thaw cycles. Suggest spin the vial prior to opening. The antibody solution should be gently mixed before use.
Note	For laboratory research only, not for drug, diagnostic or other use.

Bioinformation

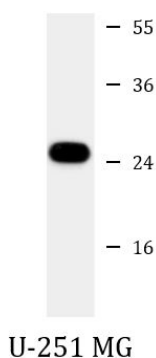
Database links	GeneID: 143187 Human Swiss-port # Q96AJ9 Human
Gene Symbol	VTI1A
Gene Full Name	vesicle transport through interaction with t-SNAREs 1A
Function	V-SNARE that mediates vesicle transport pathways through interactions with t-SNAREs on the target membrane. These interactions are proposed to mediate aspects of the specificity of vesicle trafficking and to promote fusion of the lipid bilayers. Involved in vesicular transport from the late endosomes to the trans-Golgi network. Along with VAMP7, involved in a non-conventional RAB1-dependent traffic route to the cell surface used by KCNIP1 and KCND2. May be involved in increased cytokine secretion associated with cellular senescence. [UniProt]
Research Area	Neuroscience antibody; Signaling Transduction antibody
Calculated Mw	25 kDa
Cellular Localization	Cytoplasmic vesicle. Golgi apparatus membrane; Single-pass type IV membrane protein

Images



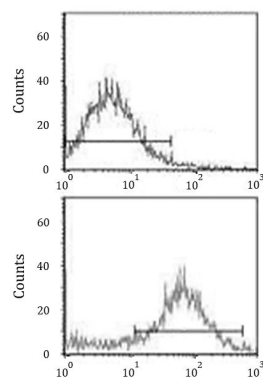
ARG55012 anti-VTI1A antibody IHC-P image

Immunohistochemistry: Formalin-fixed and paraffin-embedded Human lung carcinoma stained with ARG55012 anti-VTI1A antibody.



ARG55012 anti-VTI1A antibody WB image

Western blot: 35 µg of U-251 MG cell lysate stained with ARG55012 anti-VTI1A antibody at 1:1000 dilution.



ARG55012 anti-VTI1A antibody FACS image

Flow Cytometry: NCI-H292 cells stained with ARG55012 anti-VTI1A antibody (bottom histogram) or without primary antibody control (top histogram), followed by incubation with FITC labelled secondary antibody.